

AO
VERIFIED
SYS 2NV18
2NV13

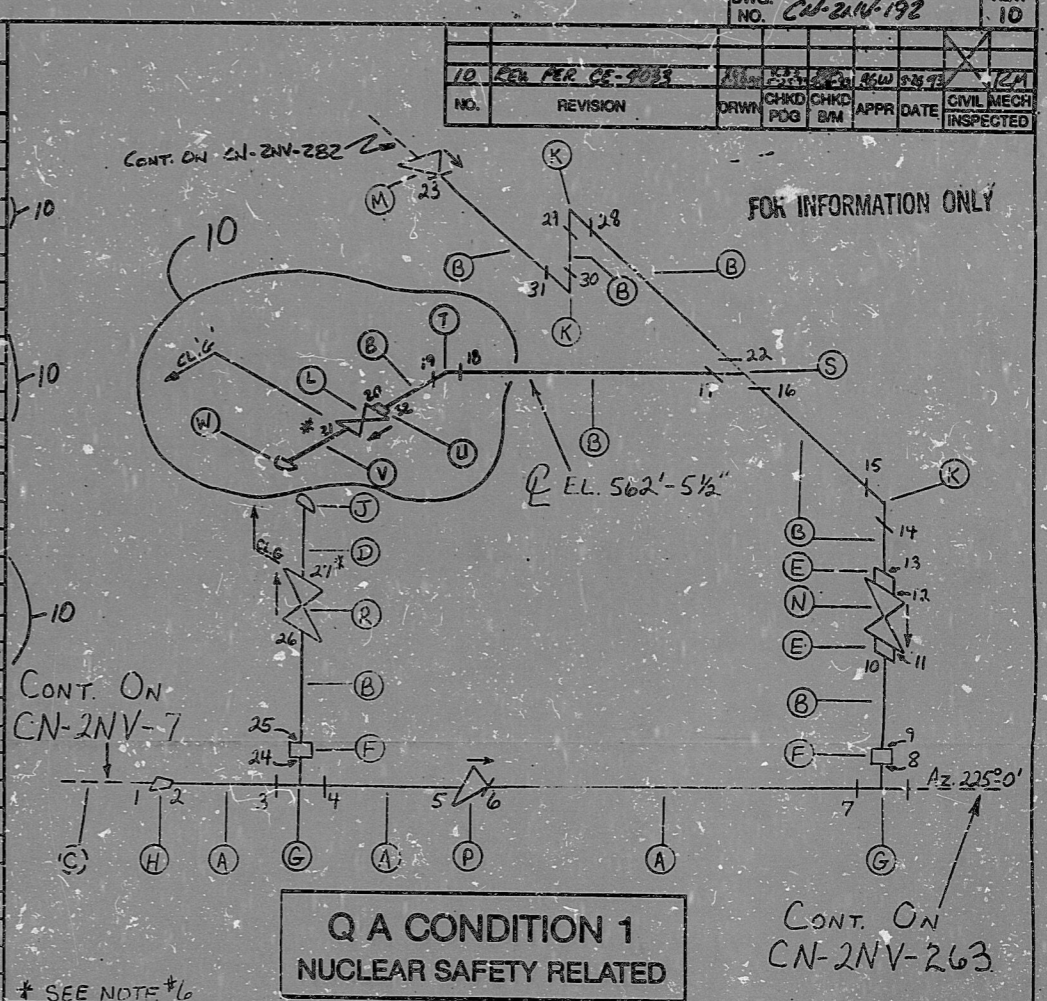
AO
VERIFIED
SYS 2NV25
2NV13, 2NV16

HIGH ENERGY

22510

DWG. NO. CN-2NV-192 REV. 10

BILL OF MATERIAL								
MARK L.D.	QUANTITY	MATERIAL CLASS TYPE	SPECIFICATION GRADE	DESCRIPTION	CONST.	SIZE	QTY	LOT NO.
A	2	B SS	SA370 TP304	PIPE	SMLS	2"	160	BAAB111N126
B	6	B SS	SA370 TP304	PIPE	SMLS	3/4"	160	BAAB111N126
C	0	- SS	-	PENETRATION	-	4"	-	IN 21-339
D	1	B SS	SA370 TP304	NIPPLE	FOR	1/2"	160	BAAB111N126
E	2	B SS	SA182 F304	RED. INS. SW	FOR	1/2"	6000	BA2F010B01006
F	2	B SS	SA182 F304	RED. IN. SW	FOR	2/2"	6000	BA2F010B01006
G	2	B SS	SA182 F304	TEE SW	FOR	2"	6000	BA2F010B01006
H	1	B SS	SA182 F304	RED. IN. SW	SMLS	1/2"	160	BAAB111N126
J	1	B SS	SA182 F304	CAP	THRD	FOR	3/4"	6000
K	3	B SS	SA182 F304	90° ELL SW	FOR	3/4"	6000	BA2F010B01006
L	1	A SS	-	2NV059 (GL) SW	-	1"	-	IN-497-561
M	1	A SS	-	2NV058 (CK) SW	-	3/4"	-	IN-497-561
N	1	A SS	-	2NV057 (GL) SW	-	1"	-	IN-497-561
P	1	A SS	-	2NV057 (CK) SW	-	1"	-	IN-497-561
R	1	A SS	-	2NV056 (GL) SW	-	3/4"	-	IN-497-561
S	1	B SS	SA182 F304	TEE SW	FOR	3/4"	6000	BA2F010B01006
T	1	B SS	SA182 F304	45° ELL SW	FOR	3/4"	6000	BA2F010B01006
U	1	B SS	SA182 F304	RED. INS. SW	FOR	3/4"	6000	BA2F010B01006
V	1	B SS	SA312 TP304	NIPPLE	FOR	1/2"	160	BAAB111N126
W	1	B SS	SA182 F304	PIPE CAP	THRD	FOR	1"	6000



Q A CONDITION 1
NUCLEAR SAFETY RELATED

- NOTES:
- ALL WELD NUMBERS SHALL BE PRECEDED BY 2NV192 -
 - LAST WELD NO. 32
 - REF. LAYOUT DWG. CN-2491-NV042
 - REF. FLOW DWG. CN-2554-1.5 (H-4)
 - CHECK FOR INSERVICE INSPECTOR TEMP. 250°F / PRESS. 2750 PSI
 - WELDS 21 AND 27 ARE CLASS 'C'

NO.	REVISION	DATE	BY	CHKD	DATE
9	ADDED CONT.	10-1-83	WJ	WJ	10-1-83
8	REV. ITEM C	10-23-82	WJ	WJ	10-23-82

NO.	REVISION	DATE	BY	CHKD	DATE
7	Revise CONF	10-16-82	WJ	WJ	10-16-82
6	Remove Id. J. from HOLD	10-15-82	WJ	WJ	10-15-82
5	Rev. Item 5	10-15-82	WJ	WJ	10-15-82
4	Rev. Items B & K	10-15-82	WJ	WJ	10-15-82
3	Rev. Item E	10-15-82	WJ	WJ	10-15-82
2	Rev. Item H	10-15-82	WJ	WJ	10-15-82
1	REL FOR CONST	10-15-82	WJ	WJ	10-15-82

Q A CONDITION 1
DUKE POWER COMPANY
CATAWBA NUCLEAR STATION
TITLE CHEM AND VOL CONTROL SYS.
FROM SEAL WTR. INJ. FILTER TO
REAC. COOLANT PP 2B SEAL
SYS NV LINE NO. 26
PIPING SPEC. PS 2501.2
LOCATION REACTOR BLDG RTU
DWG. NO. CN-2NV-192 REV. NO. 10

ANSTEC
APERTURE
CARD

PDR RIDS

9403150092

