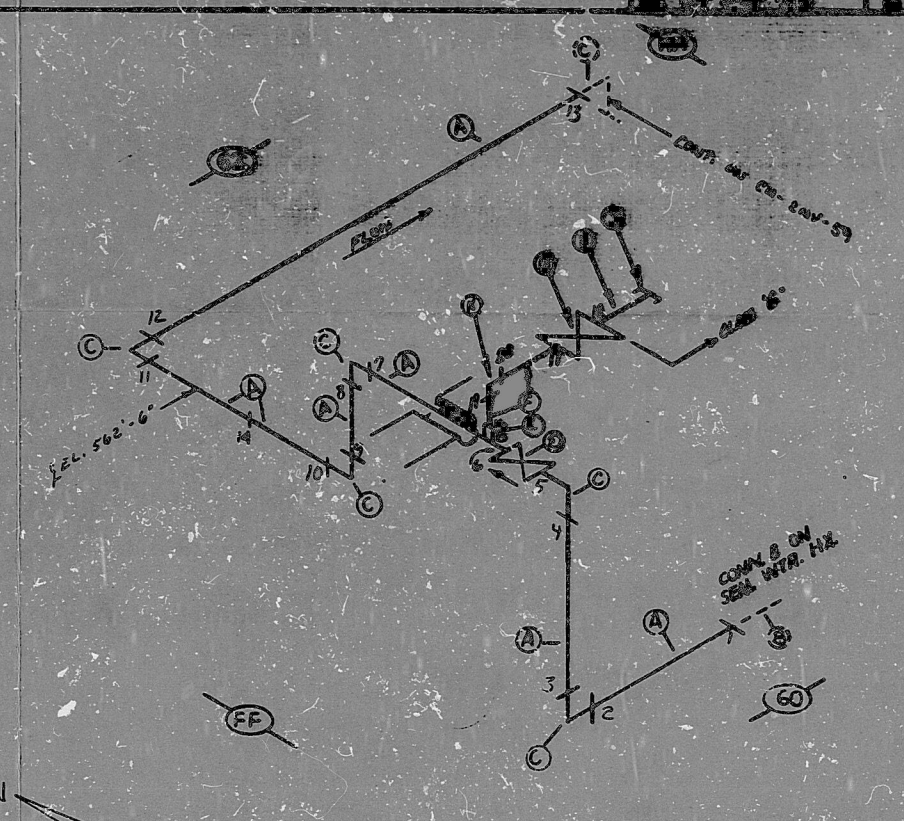


2015  
**AO**  
 VERIFIED  
 SYS. 2492-182  
 2492-182

BILL OF MATERIAL									
ITEM	QTY	UNIT	DESCRIPTION	ORIGIN	SIZE	LEN	WGT	LOT NO.	REMARKS
A	37	1	PIPE	4"	40				
B	0	1	FLANGE	4"	40				
C	3	1	ELL. (90°)	4"	40				
D	1	1	VALVE (SV) (BL)	4"	40				
E	1	1	VALVE (SV) (BL)	1"	40				
F	1	1	VALVE (SV) (BL)	1"	40				
G	1	1	VALVE (SV) (BL)	1"	40				
H	1	1	NIPPLE (BL)	1"	80				
J	1	1	PIPE CAP	1"	800				
K	1	1	PIPE CAP	1"	800				



**G A CONDITION 1**  
 NUCLEAR SAFETY RELATED

**NOTES:**  
 1 ALL WELD NUMBERS SHALL BE PRECEDED BY NV 182  
 2 LAST WELD NO. 20  
 3 REF. LAYOUT DWG. CN-2492-NV205  
 4 REF. FLOW DWG. CN-2554-1.6 (C-6)  
 5 CHECK FOR INSERVICE INSPECTION: 105 PSIA + 225°F  
 6 WELD ID IS CLASS G

FOR INFORMATION ONLY

NO.	REVISION
6	REV. CONT.
5	REV. CONT.
4	REV. CONT.
3	REV. CONT.
2	REV. CONT.
1	REV. CONT.
0	REL. FOR CONST.

NUCLEAR SAFETY RELATED	
DATE	11/18/54
BY	J. W. ...
CHEMICAL AND VOL. CONTROL SYSTEM SEAL WTR. HX. DISCHARGE	
SYD	NV 182 NO. 00 - CLASS B
PROJ. SPEC.	PS 151.2
LOCATION	AUX. BLDG. (A-60)
DWG. NO.	CN-2492-182 - REV. NO. 6

ANSTEC  
 APERTURE  
 CARD



PDR RIDS

9603150091

