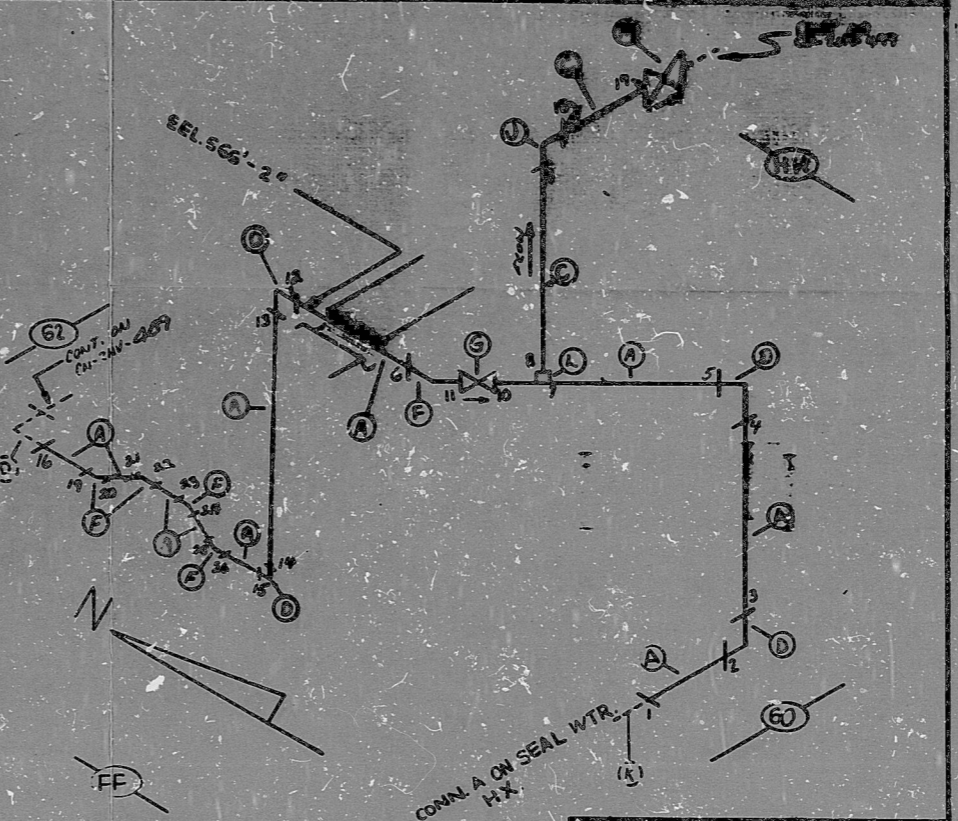


20075
AO
VERIFIED
SYS. BY
2/20/54

HIGH ENERGY

14954 CN-2492-16 10

BILL OF MATERIALS							
ITEM	QTY	UNIT	DESCRIPTION	SIZE	WT	VAL	USE
A	30'	B	SS 24312 TR. 3/4" PIPE	3/4"	40		
B							
C	4'	B	SS 24312 TR. 3/4" PIPE	3/4"	40		
D	4	B	SS 2440 WELDED SOPELL (BW)	4"	40		
E							
F	5	B	SS 2440 WELDED 45° ELL (SW)	4"	40		
G	1	B	SS 2440 WELDED SOPELL (SW)	4"	40		
H							
J	1	B	SS 2440 WELDED SOPELL (SW)	4"	40		
K	0						
L	1	B	SS 2440 WELDED SOPELL (SW)	4"	40		
M	1	B	SS 2440 WELDED SOPELL (SW)	4"	40		



NOTES:
 ① ALL WELD FABRICATIONS SHALL BE PERFORMED BY ENV B1.
 ② LAST WELD NO. 27
 ③ DER. LAYOUT DWG. CN-2492-NV201 / V.N. 12, 615
 CN-2492-NV211 / V.N. 29, 843
 ④ DER. FLOW DWG. CN-2554-16 (C-3)
 ⑤ CHECK FOR INSERVICE INSPECTION: 165 PSIA + 225°F

NO.	REVISION
10	Del. Wtd. # 27
9	Del. Wtd. # 27
8	Del. Wtd. # 27

NO.	REVISION
7	ADDED CONTROL
6	REMOVED ITEM C
5	REMOVED ITEM D
4	ADD HOLD ITEM D
3	REMOVED ITEM D
2	ADD HOLD ITEM D
1	REMOVED ITEM D
0	REL FOR CONST

Q A CONDITION 1 NUCLEAR SAFETY RELATED	
NUCLEAR SAFETY RELATED	CLASS 1
ENGINE POWER COMPANY	CENTRA NUCLEAR DIVISION
CHEMICAL AND VOL. CONT. SYSTEM TO SEAL WATER HX.	
ENV. NV	LINE NO. 08 - ENGINE CLASS 1B
DESIGN SPEC.	PS 151.2
LOC. ITEM	ANY BLD'G (A-60)
DWG. NO.	CN-2492-16
REV. NO.	10

ANSTEC
APERTURE
CARD

PDR RIDS

9603150082

