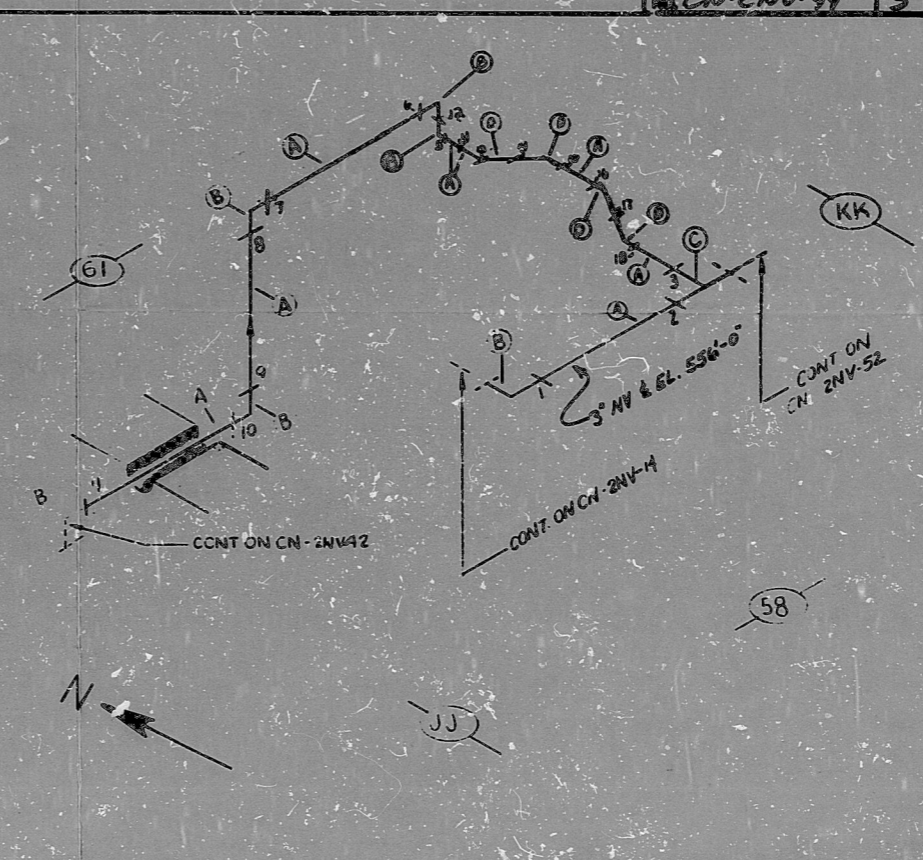


ANSTEC  
APERTURE  
CARD

NO  
VERIFIED  
BY  
DATE

CN-2NV-49 3

BILL OF MATERIAL									
ITEM	QTY	CLASS	YEAR	DESCRIPTION	UNIT	SIZE	WGT	WGT	WGT
A	51	B	55	SA178 TP304 PIPE	SMLS	3"	160	10.40	10.40
B	5	B	55	SA403 WP304 90° EL (BW)	SMLS	3"	160	5.12	5.12
C	1	B	55	SA403 WP304 TEE (BW)	SMLS	3"	160	5.75	5.75
D	4	B	55	SA403 WP304 45° ELL (BW)	SMLS	3"	160	5.75	5.75



NOTES:  
 ① ALL WELD NUMBERS SHALL BE PRECEDED BY 2NV49  
 ② LAST WELD NO. 18  
 ③ REF. LAYOUT DWG. CN 2492 NV103 VN# 22076  
 ④ REF. FLOW DWG. CN 2254-12 H.G. 2  
 CHECK FOR INSER. OF FLOW D. (PREP) 1750 P31A  
 (11/14/75) L

FOR INFORMATION ONLY

NO.	REVISION	DATE	DATE
3	ADD CONT.		
2	ADD WELDS 15-18 AND 17-18		
1	ADD WELD "A" REV. H.G. 2		
0	REL FOR CONST.		

QA CONDITION 1	
NUCLEAR SAFETY RELATED	YES
DUKE POWER COMPANY	104-21
CATAWBA NUCLEAR STATION	
TITLE	CHEMICAL AND VOLUME CONTROL SYSTEM TO SEAL WATER INJECTION FILTERS 2A & 2B
SYS	NV LINE NO. 26 DUKE CLASS E
PIPING SPEC	PS 2501 2
LOCATION	AUX. BLD'G (443)
DWG. NO.	CN-2NV-49
REV. NO.	3

ANSTEC  
APERTURE  
CARD

PDR RIDS

9603150002

