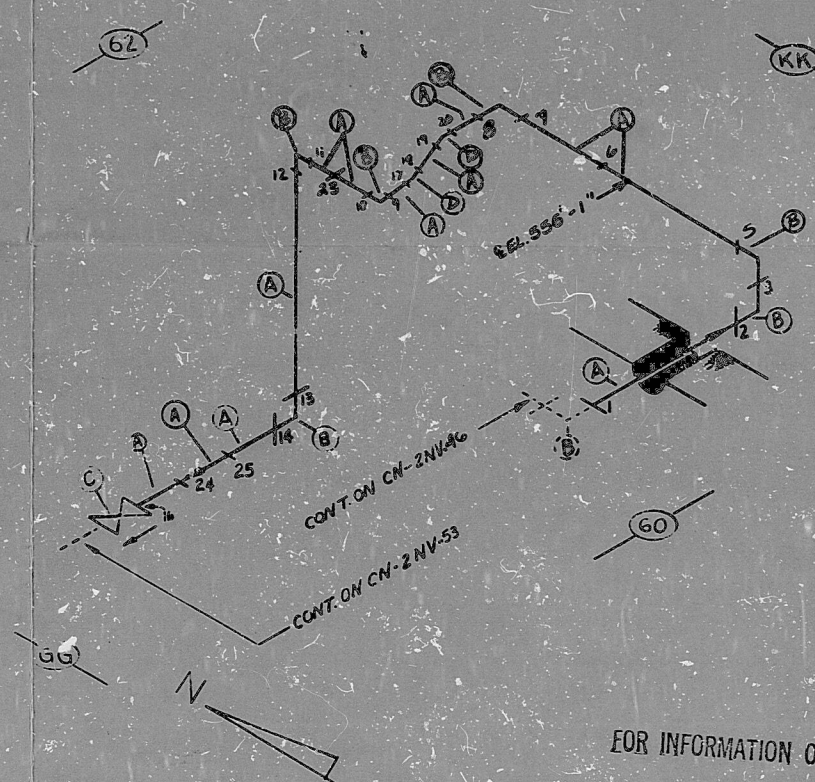


AO
VERIFIED
DATE: 2/17/72
BY: [Signature]

37031

CN-2NV-47 110

BILL OF MATERIAL									
QTY	DESCRIPTION	UNIT	GRADE	SIZE	WGT	WGT	WGT	WGT	WGT
A	75'	B	SS	2" X 1/2"	TP-304	PIPE	SMLS	3"	160
B	S	B	SS	90°	ELL (BW)	SMLS	3"	160	1
C	1	A	SS	2" X 1/2"	AGTYON			3"	160
D	2	B	SS	45°	ELL	3" W	SMLS	3"	160



ANSTEC
APERTURE
CARD

FOR INFORMATION ONLY

NOTES:
 1. ALL WELD NUMBERS SHALL BE PRECEDED BY 2NV47-
 2. LAST WELD NO. 44
 3. REF. LAYOUT DWG. CN-2A92-NV510 / 110 # 29,721
 4. REF. FLOW DWG. CN-2554-12 (K-3-5)
 5. CHECK FOR INSERVICE INSPECTION (PRES) 2700 PSIA (TEMP) 250°F

NO.	REVISION	DATE	BY	CHKD	DATE	BY
7	ADD WELD #23					
6	ADD WELD #22					
5	ADD WELD #21					
4	REM HOLD ITEM B					
3	REMOVE HOLD ITEM D					
2	ADD ITEM E AND WELDS TO REG. CONFIG.					
1	SEE WELD # 2					
0	REL FOR CONST.					
10	ADDED WELD # 25					
9	REVISE CONT.					
8	REL WELDS 23-25					

QA CONDITION 1	
NUCLEAR SAFETY RELATED	YES
DUKE POWER COMPANY	CASWABA NUCLEAR STATION
TITLE	CHEMICAL AND VOLUME CONTROL SYSTEM TO REGENERATIVE HX. 2
SVR. NV	LINE NO. 01 DUCT CLASS B
PIPING SPEC.	PS 2501.2
LOCATION	AUX BLD'G (A-43)
DWG. NO.	CN-2NV-47
REV. NO.	10

PDR RIDS

9403150060

