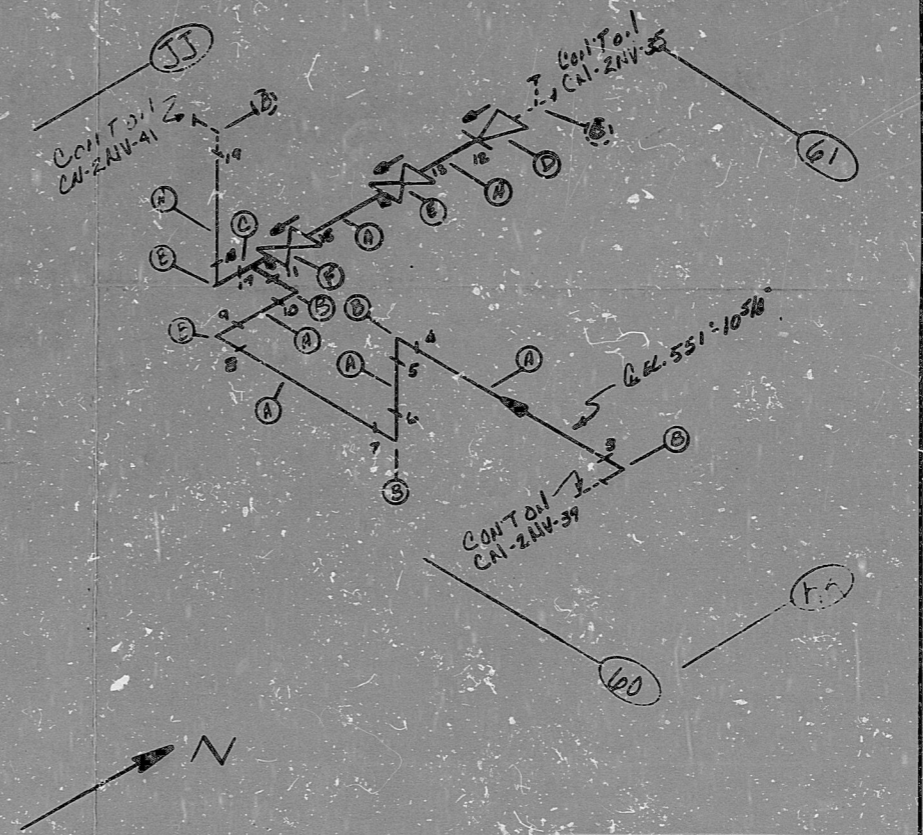


24VTS AO
VERIFIED
SYS. 24VTS/24VTS
24VTS/24VTS

CN-24V-34 3

BILL OF MATERIALS									
ITEM NO.	QTY	DESCRIPTION	UNIT	SIZE	WGT	WELD NO.	WELD NO.	WELD NO.	WELD NO.
A	20'	SS 304 PIPE	5"	160					
B	6	SS 304 WELDS	3"	160					
C	1	SS 304 TEE	3"	160					
D	1	SS 304 (C) WELDS	3"	160					
E	1	SS 304 (C) WELDS	3"	160					
F	1	SS 304 (C) WELDS	3"	160					



NOTES:
 1 ALL WELD NUMBERS SHALL BE PRECEDED BY 24V-34 --
 2 LAST WELD NO. 14
 3 REF LAYOUT DWG. CN-2492-41034
 4 REF FLOW DWG. CN-2554-112 J-B, 9, 10
 5 CHECK FOR INSERVICE INSPECTION TEMP: 250°F
 PRESS: 2750 PSIA

FOR INFORMATION ONLY

NO.	REVISION	DATE	BY	CHKD	DATE	BY
3	ADD CONTR					
2	ADD WELD MARK FOR WELDS					
1	DEL WELD NO. 14 REV. 14					
0	BEL FOR CONIST					

QA CONDITION 1

NUCLEAR SAFETY RELATED **YES**

DUKE POWER COMPANY
CATAMBA NUCLEAR STATION

TITLE
CHEMICAL AND VOLUME CONTROL SYS.
TO REGENERATIVE H.V.

SYS. NV LINE NO. 24 DUSE CLASS. 2

PIPING SPEC. P.S. 25012

LOCATION BUL 6123 H-43

DWG. NO. CN-24V-34 REV. NO. 3

ANSTEC
APERTURE
CARD

PDR AIDS

9603140421

