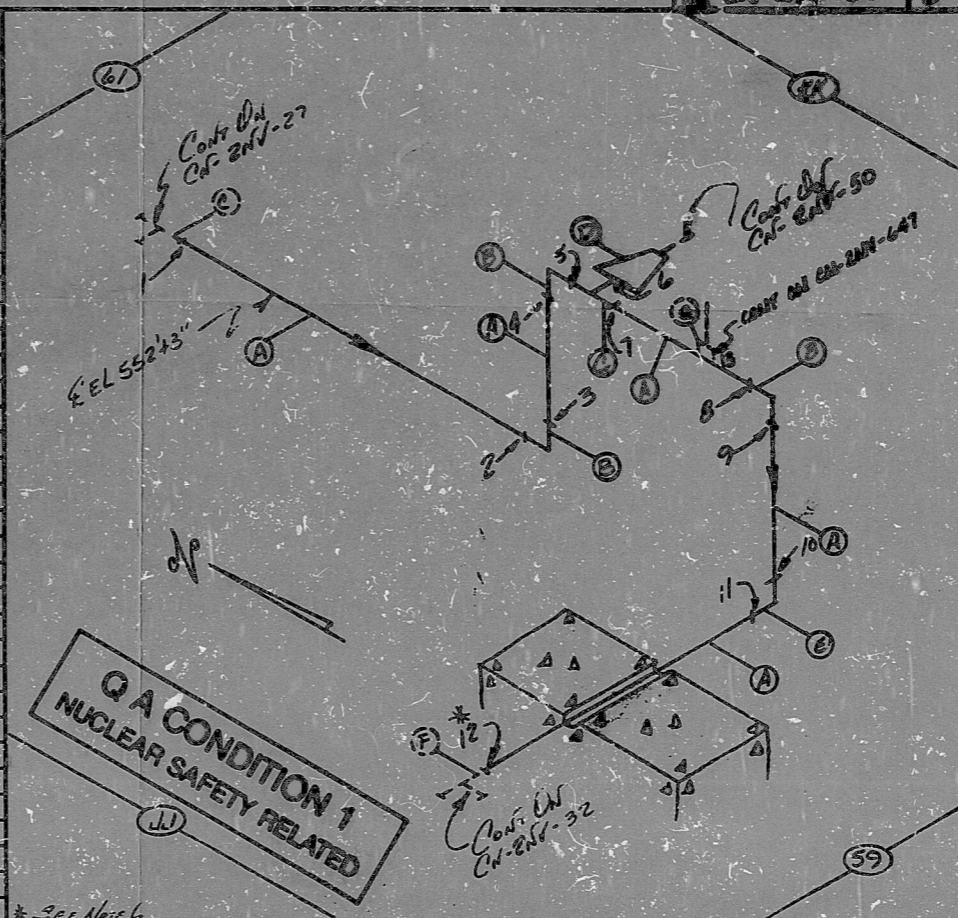


24117 21172

BILL OF MATERIALS									
QTY	DESCRIPTION	UNIT	SIZE	WGT	WGT	WGT	WGT	WGT	WGT
A	22' B 13	PIPE	8"	20					
B	3 B 33	PIPE	8"	20					
C	1 B 33	PIPE	8"	20					
D	1 B 33	PIPE	8"	20					
E	1 B 33	PIPE	8"	20					
F	0 B 33	PIPE	8"	20					
G	0 B 33	PIPE	8"	20					



ANSTEC APERTURE CARD

NOTES:  
 1 ALL WELD NUMBERS SHALL BE PRECEDED BY 24117  
 2 LAST WELD NO. 13  
 3 REF. LAYOUT DWG. CAL-2432-NV167/167-7264  
 4 REF. FLOW DWG. CAL-2554-1.7 (D-13)  
 5 CHECK FOR INSERVICES INSPEC. N: 7. MP 175°F  
 6 TRANSDUCION I.A.W. MDG-ES-11  
 Press. 285 P.T.S.A.

FOR INFORMATION ONLY

NO.	REVISION	DATE	BY
1			
2			
3			
4			
5			
6			
7			
8			
9			
10			

NUCLEAR - SAFETY RELATED  
 DUSE POWER COMPANY  
 CANYON NUCLEAR STATION  
 TITLE Chemical Area Volume Control  
 System - 10 Centrifugal  
 Charging Pumps 2A & 2B  
 Dwg. No. 21V-33  
 DATE CLASS  
 PIPING SPEC. PS-3012  
 LOCATION Aux. Bldg. A43-500  
 Dwg. No. 21V-33

PDR RIDS

9603140479

