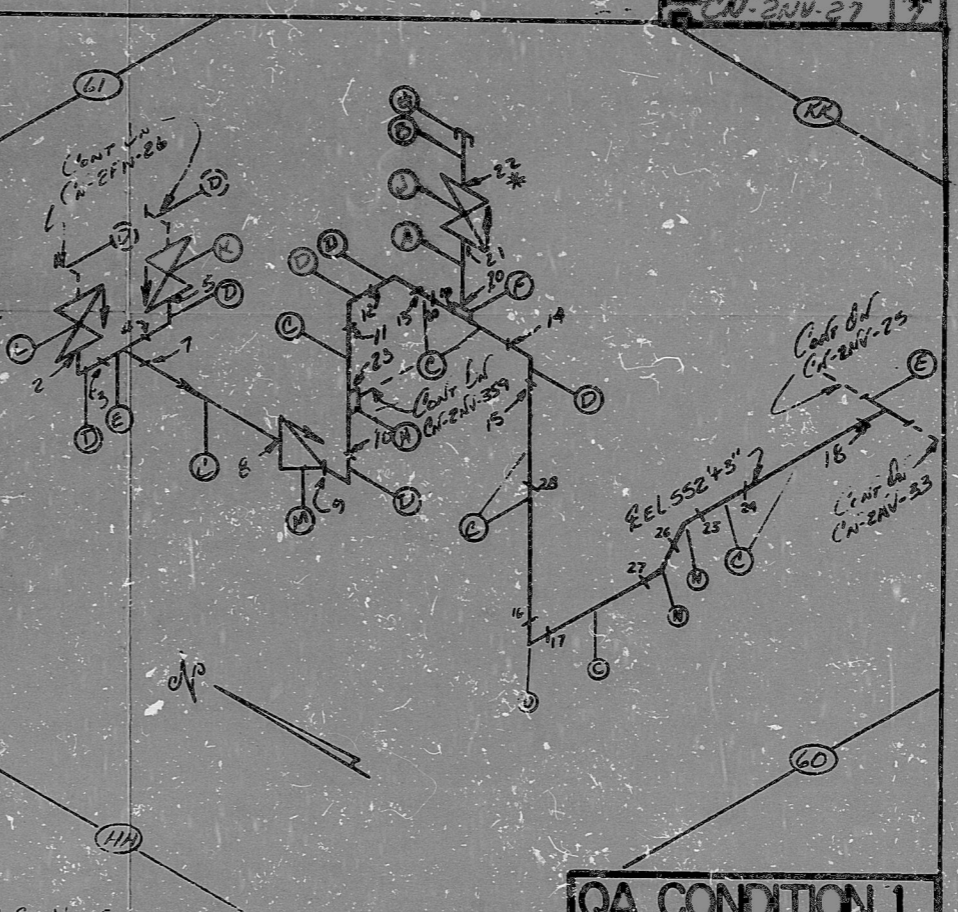


AO  
VERIFIED  
S.S. CAUTZ

AO  
VERIFIED  
FW  
2/11/42/11/7

CN-21V-27

COMP. NO.	LINE NO.	QTY	SYMBOL	DESCRIPTION	CONCT.	SIZE	WGT.	WELD NO.
A	1	2	55	PIPE	3/4"	40		
B	1	2	55	PIPE	3/4"	20		
C	35	2	55	PIPE	5"	20		
D	7	8	55	45° ELL	5"	20		
E	2	8	55	TEE	5"	20		
F	1	2	55	PIPE	3/4"	3000		
G	1	2	55	PIPE	3/4"	3000		
H	1	2	55	PIPE	2"	3000		
J	1	2	55	PIPE	3/4"			
K	1	4	55	PIPE	2"	20		
L	1	4	55	PIPE	2"	20		
M	1	2	55	PIPE	5"	20		
N	2	8	55	45° ELL	5"	20		



ANSTEC  
APERTURE  
CARD

NOTES:  
 1 ALL WELD NUMBERS SHALL BE PRECEDED BY 21V 27 -  
 2 LAST WELD NO. 30  
 3 REF. LAYOUT DWG. CN-2492-A/1072 / IN # 13,524  
 4 REF. FLOW DWG. CN-2554-1.1 (K-11) R.E.B.  
 5 WELD NO. 22 IS CLASS "B" WELD

FOR INFORMATION ONLY

NO.	REVISION	DATE	BY	CHKD.	DATE
7	DEL WELD 29				
6	Add Cont.				
5	Rev Note 5				
4	RELOCATE WELDS 50,55				
3	ADD 1/4" R. FOR CONT. ALL WELDS 22-30				
2	Rev. Lot No. Item 2				
1	All Wld 24, Rev. NSR				
0	REL'D FOR CONSTR.				

QA CONDITION 1

NUCLEAR - SAFETY RELATED - 100%  
 DUKE POWER COMPANY  
 CATAWBA NUCLEAR STATION  
 TITLE CHEMICAL AND VOLUME CONTROL  
 SYSTEM - TO CENTRIFUGAL  
 CHARGING PUMPS "2A FEB"  
 SYS. NO. LINE NO. 13 DUNE CLASS 5  
 PIPING SPEC. P.S. 301.2  
 LOCATION AUX. ROOM 4A3  
 DWG. NO. CN-21V-27 REV. NO. 7



PDR RIDS

9403140401

