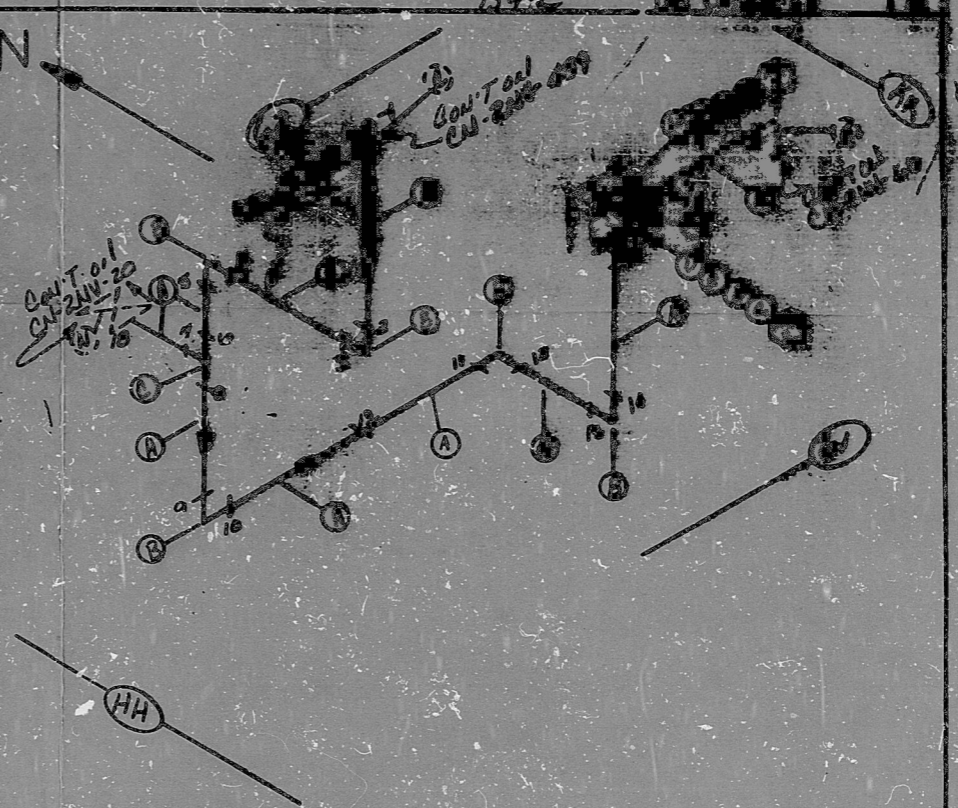


AO
VERIFIED

AO
VERIFIED
SYS 2007(09)
24107, 24108

ITEM NO.	DESCRIPTION	QTY	UNIT	REV.	REV. NO.
1	PIPE 1/2" SCH 40	10	FT		
2	PIPE 1/2" SCH 40	10	FT		
3	PIPE 1/2" SCH 40	10	FT		
4	PIPE 1/2" SCH 40	10	FT		
5	PIPE 1/2" SCH 40	10	FT		
6	PIPE 1/2" SCH 40	10	FT		
7	PIPE 1/2" SCH 40	10	FT		
8	PIPE 1/2" SCH 40	10	FT		
9	PIPE 1/2" SCH 40	10	FT		
10	PIPE 1/2" SCH 40	10	FT		
11	PIPE 1/2" SCH 40	10	FT		
12	PIPE 1/2" SCH 40	10	FT		
13	PIPE 1/2" SCH 40	10	FT		
14	PIPE 1/2" SCH 40	10	FT		
15	PIPE 1/2" SCH 40	10	FT		
16	PIPE 1/2" SCH 40	10	FT		
17	PIPE 1/2" SCH 40	10	FT		
18	PIPE 1/2" SCH 40	10	FT		
19	PIPE 1/2" SCH 40	10	FT		
20	PIPE 1/2" SCH 40	10	FT		
21	PIPE 1/2" SCH 40	10	FT		
22	PIPE 1/2" SCH 40	10	FT		
23	PIPE 1/2" SCH 40	10	FT		
24	PIPE 1/2" SCH 40	10	FT		
25	PIPE 1/2" SCH 40	10	FT		
26	PIPE 1/2" SCH 40	10	FT		
27	PIPE 1/2" SCH 40	10	FT		
28	PIPE 1/2" SCH 40	10	FT		
29	PIPE 1/2" SCH 40	10	FT		
30	PIPE 1/2" SCH 40	10	FT		
31	PIPE 1/2" SCH 40	10	FT		
32	PIPE 1/2" SCH 40	10	FT		
33	PIPE 1/2" SCH 40	10	FT		
34	PIPE 1/2" SCH 40	10	FT		
35	PIPE 1/2" SCH 40	10	FT		
36	PIPE 1/2" SCH 40	10	FT		
37	PIPE 1/2" SCH 40	10	FT		
38	PIPE 1/2" SCH 40	10	FT		
39	PIPE 1/2" SCH 40	10	FT		
40	PIPE 1/2" SCH 40	10	FT		
41	PIPE 1/2" SCH 40	10	FT		
42	PIPE 1/2" SCH 40	10	FT		
43	PIPE 1/2" SCH 40	10	FT		
44	PIPE 1/2" SCH 40	10	FT		
45	PIPE 1/2" SCH 40	10	FT		
46	PIPE 1/2" SCH 40	10	FT		
47	PIPE 1/2" SCH 40	10	FT		
48	PIPE 1/2" SCH 40	10	FT		
49	PIPE 1/2" SCH 40	10	FT		
50	PIPE 1/2" SCH 40	10	FT		



Q A CONDITION 1
NUCLEAR SAFETY RELATED

FOR INFORMATION ONLY

NOTES:
 1 ALL WELD DRAWINGS SHALL BE PRECEDED BY 241023-
 2 LAST WELD NO. 19
 3 DES. LAYOUT DWG. CN-2492-NV186 W/REV 3740
 4 DES. FLOW DWG. CN-2492-NV186 W/REV 3740
 5 CHECK FOR INSERVICE INSPECTION TEMP 250°
 6 ALL MECH. JT. NO'S SHALL BE PRECEDED BY 241023-

14	REMOVE ITEM J
13	REMOVE ITEM K
12	REMOVE ITEM L
11	REMOVE ITEM M
10	REMOVE ITEM N
9	REMOVE ITEM O
8	REMOVE ITEM P

7	REMOVE ITEM H
6	REMOVE ITEM K
5	REMOVE ITEM L
4	REMOVE ITEM M
3	REMOVE ITEM N
2	REMOVE ITEM O
1	REMOVE ITEM P
D	REMOVE ITEM Q

NUCLEAR SAFETY RELATED	
DATE FORNED COMPANY	
CAMBRIA NUCLEAR SYSTEMS	
MECHANICAL AND VOLUME CONTROL SYS TO VOLUME CONTROL TANK	
SYS. NO. NV 186	LINE NO. 23
FORM SPEC. PS 151.2	DATE CLASS. B
LOCATION BULK BLDG	A-43
REV. NO. CN-2492-23	REV. DATE 11/19

ANSTEC
APERTURE
CARD

PDR RIDS

9603140396

