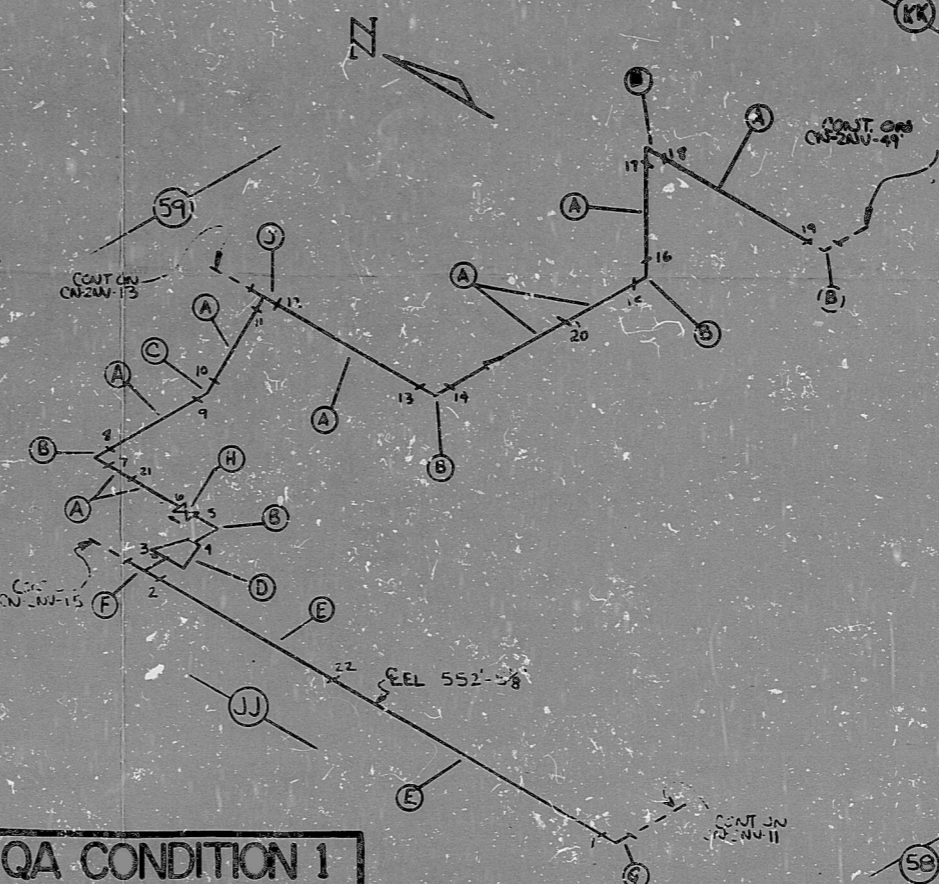


20773
 40
 VERIFIED
 20773
 20773

CN-2NU-14

BILL OF MATERIALS									
LINE NO.	QUANTITY	DESCRIPTION	UNIT	CONC.	SIZE	WGT.	WELD NO.	WELD NO.	WELD NO.
A	25'	SS 316 TP304 PIPE	SMPLS	3"	160				
B	5	SS 316 TP304 90° ELL (BW)	SMPLS	3"	160				
C	1	SS 316 TP304 45° ELL (BW)	SMPLS	3"	160				
D	1	SS 316 TP304 CONC. RED. (BW)	SMPLS	4"x3"	160				
E	7	SS 316 TP304 PIPE	SMPLS	4"	160				
F	1	SS 316 TP304 TEE (BW)	SMPLS	4"	160				
G	1	SS 316 TP304 90° ELL (BW)	SMPLS	4"	160				
H	1	SS 316 TP304 2" UN271 (GL) (BW)	SMPLS	3"	160				
J	1	SS 316 TP304 TEE (BW)	SMPLS	3"	160				



ANSTEC
 APERTURE
 CARD

NOTES:
 1 ALL WELD NUMBERS SHALL BE PRECEDED BY 2NU14-
 2 LAST WELD NO. = 2
 3 REF LAYOUT DWG. CN-24-2-N1076
 4 REF FLOW DWG. CN-2554-17 (SHR.I-9)

FOR INFORMATION ONLY

NO.	REVISION	DATE	BY	CHKD.	DATE	BY
3	ADD					
2	REV 2-11-A					
1	ISSUED					
0	REL FOR CONSTR.					

NUCLEAR SAFETY RELATED
 DUKE POWER COMPANY
 CATAWBA NUCLEAR STATION
 TITLE: CENTRIFUGAL AND VOLUME CONTROL SYS.
 CENTRIFUGAL CHARGING PUMP 24" DIAMETER
 SYS. NV LINE NO. 26 DATE CLASS. 0
 PIPING SPEC. PS 2501.2
 LOCATION: AUXILIARY BLDG (A-43)
 DWG. NO. CN-2NU-14 REV. NO. 3

PDR RIDS

9603140387

