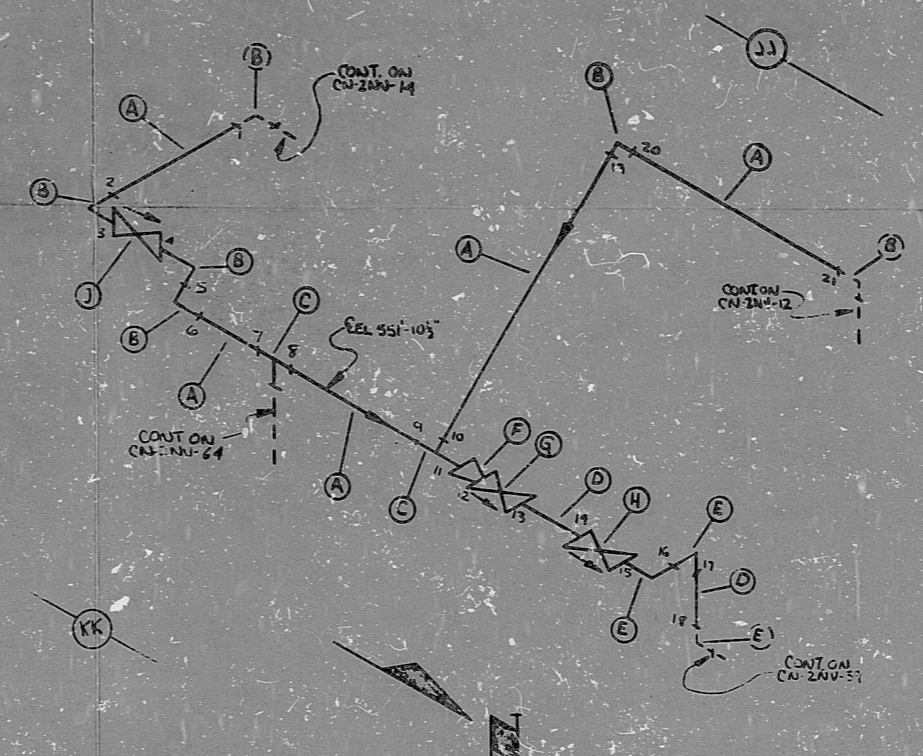


AO
VERIFIED
BY: ZNV72, ZNV73

CN-2NU-11 REV. 3

BILL OF MATERIAL									
QTY	CLASS	SIZE	TYPE	DESCRIPTION	UNIT	QTY	SIZE	QTY	LOT NO.
A	27	B	SS	SA 403 WP 304	PIPE	SMLS	4"	160	1844011300000
B	4	B	SS	SA 403 WP 304	90° ELL (Bw)	SMLS	4"	160	3122311300000
C	2	B	SS	SA 403 WP 304	TEE (Bw)	SMLS	4"	160	3122311300000
D	2	B	SS	SA 376 WP 204	PIPE	SMLS	3"	160	1844011300000
E	2	B	SS	SA 403 WP 304	90° ELL (Bw)	SMLS	3"	160	3122311300000
F	1	B	SS	SA 403 WP 304	QUANIC. RED (Bw)	SMLS	3"	160	3122311300000
G	1	A	SS	---	2NU293 (GT) (Bw)	---	3"	160	1844011300000
H	1	B	SS	---	2NU299 (CV) (Bw)	---	3"	160	1844011300000
J	1	A	SS	---	2NU272 (GT) (Bw)	---	4"	160	1844011300000



ANSTEC
APERTURE
CARD

- NOTES:
- ALL WELD NUMBERS SHALL BE PRECEDED BY ZNV.
 - LAST WELD NO. 2
 - REF. LAYOUT DWG. CN-2492-NVC79
 - REF. FLOW DWG. CN-2554-17 (DIN-K-3)
 - CHECK FOR INSER. INSR. TEMP. 50°F PRESS. 2750 PSIA

FOR INFORMATION ONLY

NO.	REVISION	DATE	BY	CHKD.
5	ADD. COND.			
2	REV. 10/15/70			
1	ADD. COND.			
0	REL. FOR CONSTR.			

NUCLEAR - SAFETY RELATED		DATE	BY
DUKE POWER COMPANY			
CATARPA NUCLEAR STATION			
TITLE			
CHEMICAL AND SOLARIS CENTRAL SYS.			
CENTRIFUGAL CHARGING PUMPS 2A/203A/203B			
SYS. NO.	LINE NO.	DATE CLASS.	
	20	B	
PIPING SPEC.			
P-5 2501.2			
LOCATION			
AUXILIARY BLDG (A-93)			
DWG. NO.	REV. NO.		
CN-2NU-11	3		

DUKE POWER COMPANY, CHARLOTTE, N.C.

PDR RIDS

9403140384

