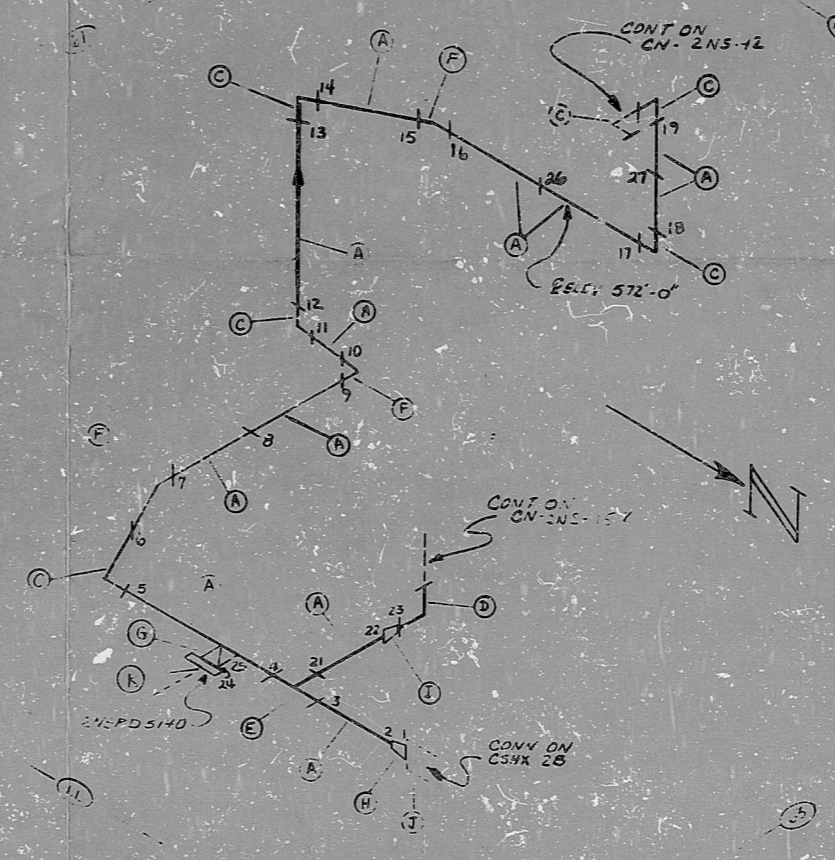


21-2  
2151

DWG. NO. CN 215-72

BILL OF MATERIAL										
CLASS. I.D.	CLASS.	CLASS.	CLASS.	CLASS.	CLASS.	CLASS.	CLASS.	CLASS.	CLASS.	CLASS.
QTY.	UNIT	DESCRIPTION	CONSTR.	SIZE	QTY.	UNIT	DESCRIPTION	CONSTR.	SIZE	QTY.
1	10'	SA 312 TP 304 PIPE	(BW)	10"	20	10'	SA 312 TP 304 PIPE	(BW)	10"	20
2	10'	SA 312 TP 304 PIPE	(BW)	10"	40	10'	SA 312 TP 304 PIPE	(BW)	10"	40
3	90°	SA 403 WP 304 90° ELL	(BW)	10"	20	90°	SA 403 WP 304 90° ELL	(BW)	10"	20
4	90°	SA 403 WP 304 90° ELL	(BW)	4"	40	90°	SA 403 WP 304 90° ELL	(BW)	4"	40
5	10'	SA 403 WP 304 TEE	(BW)	10"	20	10'	SA 403 WP 304 TEE	(BW)	10"	20
6	10'	SA 403 WP 304 45° ELL	(BW)	10"	20	10'	SA 403 WP 304 45° ELL	(BW)	10"	20
7	1"	SA 192 F 304 HALF COIL	(SW)	1"	3000'	1"	SA 192 F 304 HALF COIL	(SW)	1"	3000'
8	12" x 12"	SA 403 WP 304 RED COIL	(BW)	12" x 12"	20	12" x 12"	SA 403 WP 304 RED COIL	(BW)	12" x 12"	20
9	10" x 4"	SA 192 WP 304 RED COIL	(BW)	10" x 4"	2040'	10" x 4"	SA 192 WP 304 RED COIL	(BW)	10" x 4"	2040'
10	12"	SA 312 120# CS 4.5 B	(BW)	12"	20	12"	SA 312 120# CS 4.5 B	(BW)	12"	20
11	1"	TRUSS MEMBER SW		1"	2	1"	TRUSS MEMBER SW		1"	2



QA CONDITION 1

ANSTEC APERTURE CARD

NOTES:  
 1. ALL WELD NUMBERS SHALL BE PRECEDED BY 21572.  
 2. LAST WELD NO. 27.  
 3. REF. LAYOUT DWG. CN 215-12.  
 4. REF. FLOW DWG. CN 215-12 (D 5/8).  
 5. CHECK FOR INTERFERENCE IN SECTION 200 PSIG, 100°F.

FOR INFORMATION ONLY

NO.	REVISION	DATE	BY	CHKD.	APP'D.
1	ADD WELD # 1				
2	ADD WELD # 17				
3	ADD WELD # 26				
4	RELEASE FOR CONSTRUCTION				

Q A CONDITION 1  
 DUKE POWER COMPANY  
 CATAWBA NUCLEAR STATION  
 TITLE: CONTAINMENT SPRAY SYSTEM  
 FROM CONTAINMENT SPRAY, AX 23  
 SYS. NS LINE NO. 52 DUKE CLASS. 2  
 PIPING SPEC. PS 3  
 LOCATION: AUX BLDG  
 DWG. NO. CN 215-72 REV. NO. 5

PDR RIDS

9603140381

