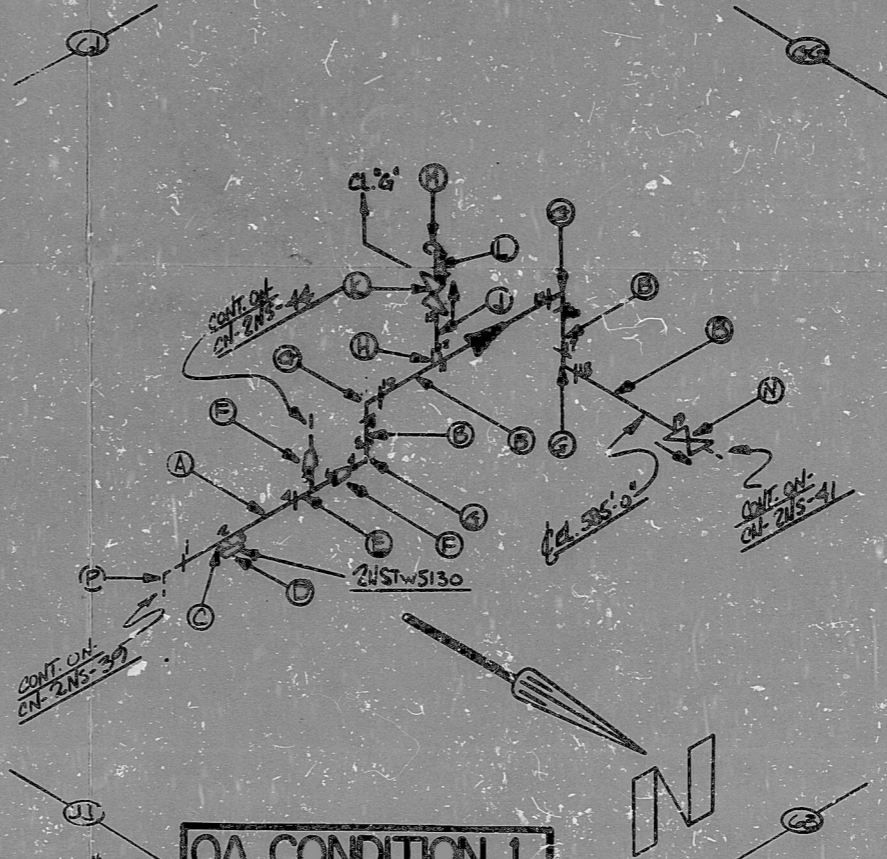


AO
VERIFIED
3/5/2NS2
2NS1, 2NS11

CN-2NS-40 REV 2

BILL OF MATERIAL									
QTY	DESCRIPTION	UNIT	QTY	DESCRIPTION	UNIT	QTY	DESCRIPTION	UNIT	QTY
A	5	SS WELD PIPE	10'	20	SS WELD PIPE	10'	20	SS WELD PIPE	10'
B	16	SS WELD PIPE	2'	20	SS WELD PIPE	2'	20	SS WELD PIPE	2'
C	7	SS WELD PIPE (3W)	1'	20	SS WELD PIPE (3W)	1'	20	SS WELD PIPE (3W)	1'
D	1	SS WELD PIPE	1'	20	SS WELD PIPE	1'	20	SS WELD PIPE	1'
E	1	SS WELD PIPE	10'	20	SS WELD PIPE	10'	20	SS WELD PIPE	10'
F	7	SS WELD PIPE (3W)	1'	20	SS WELD PIPE (3W)	1'	20	SS WELD PIPE (3W)	1'
G	4	SS WELD PIPE (3W)	1'	20	SS WELD PIPE (3W)	1'	20	SS WELD PIPE (3W)	1'
H	1	SS WELD PIPE	10'	20	SS WELD PIPE	10'	20	SS WELD PIPE	10'
J	1	SS WELD PIPE	10'	20	SS WELD PIPE	10'	20	SS WELD PIPE	10'
K	1	SS WELD PIPE (3W)	1'	20	SS WELD PIPE (3W)	1'	20	SS WELD PIPE (3W)	1'
L	1	SS WELD PIPE	10'	20	SS WELD PIPE	10'	20	SS WELD PIPE	10'
M	1	SS WELD PIPE (3W)	1'	20	SS WELD PIPE (3W)	1'	20	SS WELD PIPE (3W)	1'
N	1	SS WELD PIPE	10'	20	SS WELD PIPE	10'	20	SS WELD PIPE	10'
P	0	SS WELD PIPE (3W)	1'	20	SS WELD PIPE (3W)	1'	20	SS WELD PIPE (3W)	1'



NOTES:
 1 ALL WELD NUMBERS SHALL BE PRECEDED BY 2NS40-
 2 LAST WELD NO. 19
 3 REF. LAYOUT DWG. CN-2NS-40
 4 REF. FLOW DWG. CN-2NS-10 (I-K & 3-7)
 5 CHECK FOR INSERV. INSPECTION, 270BIA 1900E
 6 WELD NO. 14 IS CLASS 2.

FOR INFORMATION ONLY

QA CONDITION 1	
NO.	REVISION
2	REV. ITEM 'O'
1	REV. HOLD ITEM 'M'
0	REF. FOR CONST.

ANSTEC
APERTURE
CARD

PDR RIDS

9403140348

