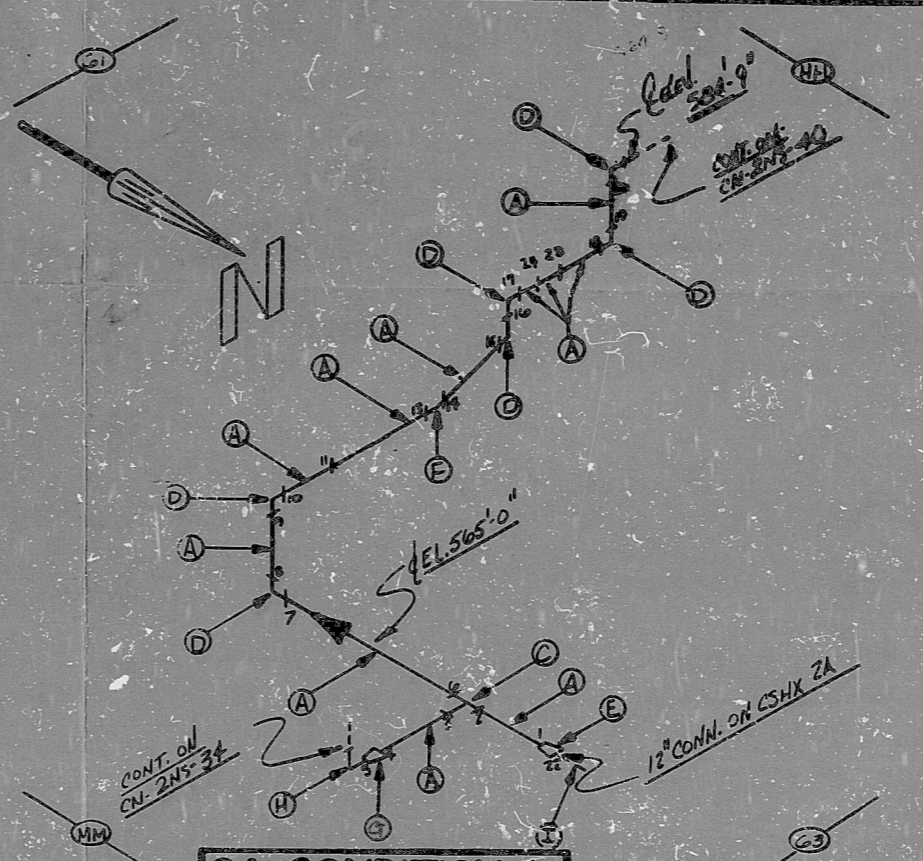


AO  
 VERIFIED  
 BY: ZNSB  
 ZNSI, ZNSI

CN-2NS-39 10

BILL OF MATERIAL							
QTY	U.O.M.	DESCRIPTION	GRADE	SIZE	WGT.	LOT NO.	REMARKS
A	79	PIPE	304	10"	20		
A	1	FLANGE (Fw)	304	10"	20		
D	6	FLANGE (Fw)	304	10"	20		
E	1	FLANGE (Fw)	304	10"	20		
F	1	FLANGE (Fw)	304	10"	20		
G	1	FLANGE (Fw)	304	10"	20		
H	1	FLANGE (Fw)	304	10"	20		
I	1	FLANGE (Fw)	304	10"	20		
J	1	FLANGE (Fw)	304	10"	20		
K	1	FLANGE (Fw)	304	10"	20		
L	1	FLANGE (Fw)	304	10"	20		
M	1	FLANGE (Fw)	304	10"	20		
N	1	FLANGE (Fw)	304	10"	20		
O	1	FLANGE (Fw)	304	10"	20		
P	1	FLANGE (Fw)	304	10"	20		
Q	1	FLANGE (Fw)	304	10"	20		
R	1	FLANGE (Fw)	304	10"	20		
S	1	FLANGE (Fw)	304	10"	20		
T	1	FLANGE (Fw)	304	10"	20		
U	1	FLANGE (Fw)	304	10"	20		
V	1	FLANGE (Fw)	304	10"	20		
W	1	FLANGE (Fw)	304	10"	20		
X	1	FLANGE (Fw)	304	10"	20		
Y	1	FLANGE (Fw)	304	10"	20		
Z	1	FLANGE (Fw)	304	10"	20		



NOTES:  
 1 ALL WELD NUMBERS SHALL BE PRECEDED BY ZNS-39-  
 2 LAST WELD NO. 28  
 3 REF. LAYOUT DWG. CN-2922-NS015 / V.N. 15.1.16  
 4 REF. FLOW DWG. CN-2502-1.0 (I-K-2-7)  
 5 CHECK FOR INSERVICE INSPECTION 390PSIA, 190°F

NO.	REVISION	DATE	BY	CHKD.	DATE
7	REL WELD 2	10-15-71	ZNSI	ZNSI	10-15-71
6	REM HOLD ITEM H	10-15-71	ZNSI	ZNSI	10-15-71
5	PLACE 10" W-N WELD	10-15-71	ZNSI	ZNSI	10-15-71
4	REMOVE HOLD ITEM H	10-15-71	ZNSI	ZNSI	10-15-71
3	DEL WELD 21	10-15-71	ZNSI	ZNSI	10-15-71
2	ADD H/ld Item H	10-15-71	ZNSI	ZNSI	10-15-71
1	REM HOLD ITEM H	10-15-71	ZNSI	ZNSI	10-15-71
0	REL FOR CONST.	10-15-71	ZNSI	ZNSI	10-15-71

FOR INFORMATION ONLY  
 QA CONDITION 1  
 DUKES POWER COMPANY  
 CASHMIRA NUCLEAR STATION  
 TITLE CONTAINMENT SPRAY SYSTEM,  
 FROM CONTAINMENT SPRAY  
 HX 2A  
 SYS. NS LINE NO. 02 DUKES CLASS B  
 PIPING SPEC. PS 301.2  
 LOCATION ALK BLDG. (A-60)  
 DWG. NO. CN-2NS-39 REV. NO. 10

ANSTEC  
 APERTURE  
 CARD

PDR RIDS

9403140343

