

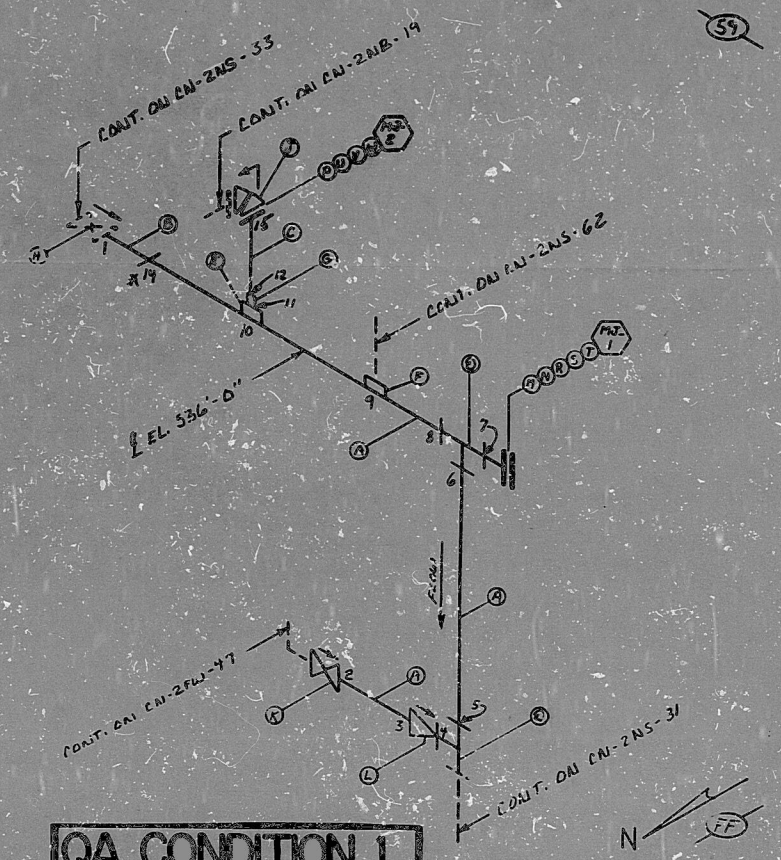
2PNTI, 2NBTI
AO
VERIFIED
SYS. F.W.N.B.
2N51, 2N52
2N53, 2N54

CN-2NS-32

ITEM NO.	QTY	UNIT	DESCRIPTION	CONTR.	SIZE	COL.	USE NO.
A	9'	B	SS SA-312 TP-304 PIPE	SALES	12"	20	10110110110110
B	1'	B	SS SA-312 TP-304 PIPE	SALES	12"	20	10110110110110
C	2'	B	SS SA-312 TP-304 PIPE	SALES	12"	20	10110110110110
D	2	B	SS SA-312 TP-304 PIPE	SALES	12"	20	10110110110110
E	1	B	SS SA-312 TP-304 PIPE	SALES	12"	20	10110110110110
F	1	B	SS SA-312 TP-304 PIPE	SALES	12"	20	10110110110110
G	1	B	SS SA-312 TP-304 PIPE	SALES	12"	20	10110110110110
H	0	A	SS - - -	SALES	12"	20	10110110110110
I	1	B	SS SA-312 TP-304 PIPE	SALES	12"	20	10110110110110
J	1	B	SS SA-312 TP-304 PIPE	SALES	12"	20	10110110110110
K	1	B	SS SA-312 TP-304 PIPE	SALES	12"	20	10110110110110
L	1	B	SS SA-312 TP-304 PIPE	SALES	12"	20	10110110110110
M	1	B	SS SA-312 TP-304 PIPE	SALES	12"	20	10110110110110
N	1	B	SS SA-312 TP-304 PIPE	SALES	12"	20	10110110110110
P	1	B	SS SA-312 TP-304 PIPE	SALES	12"	20	10110110110110
R	1	-	SS SPARK WARDER GASKET	(G-4)	12"	300	50110110110110
S	16	B	AS SA-193 B-7 STUD	(E-4)	1/2" x 7"	-	50110110110110
T	32	B	CS SA-193 2-H HEX NUTS	(E-5)	1/2"	N.S.	50110110110110
U	1	-	SS SPARK WARDER GASKET	(G-4)	12"	300	50110110110110
V	4	B	AS SA-193 B-7 STUD	(E-4)	1/2" x 7"	-	50110110110110
W	8	A	CS SA-193 7 HEX NUTS	(E-5)	1/2"	N.S.	50110110110110

HM

SS



NOTES:
 1 ALL WELD NUMBERS SHALL BE PRECEDED BY _____
 2 LAST WELD NO. _____
 3 REV. LAYOUT DWG. CN-2NS-15006
 4 REF. FLOW DWG. CN-2NS-10 (SEE 510-1)
 5 CHECK FOR INTERFERENCE INSTALLED 225 DSA 190F
 6 ALL WELD JOINTS, NO. SMALL BE RELEVANT BY ENG'G
 7 TRANSITION 2-A-W-HD-E-11

FOR INFORMATION ONLY

QA CONDITION I

NO.	REVISION	DATE	BY	CHKD.
3	DEL. WELD TO AND WELD IN			
2	REV. ITEM 5 ITEM #			
1	Add Co. 1			
0	REL FOR CONST.			

ANSTEC APERTURE CARD

PDR RIDS

9603140336

