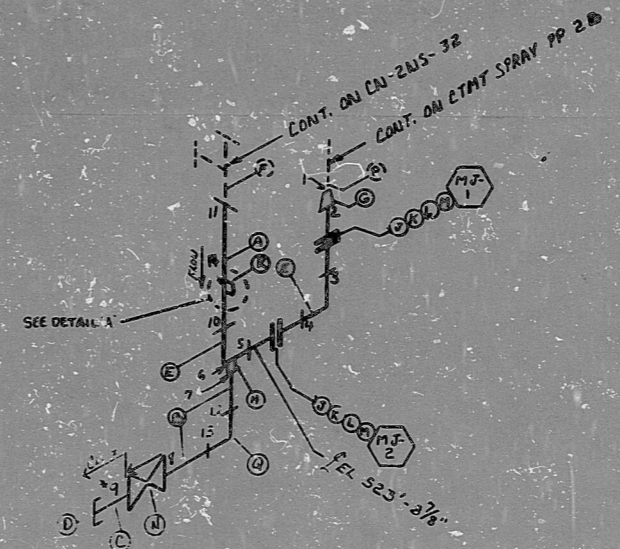


AO
VERIFIED
SYS 2 NSI 2152
21511

23356

CN-2NS-31

BILL OF MATERIALS									
ITEM	QTY	UNIT	SYMBOL	DESCRIPTION	CONTR.	SIZE	WGT.	WGT.	WGT.
A	6'	B	SS	SA-102	72.304	PIPE	SM-S	12"	20
B	1'	B	SS	SA-102	72.304	PIPE	SM-S	2"	40
C	1	B	SS	SA-102	72.304	WELDED JOINT	SM-S	2"	80
D	1	B	SS	SA-102	72.304	WELDED JOINT	SM-S	2"	80
E	2	B	SS	SA-102	72.304	WELDED JOINT	SM-S	2"	80
F	0	B	SS	SA-102	72.304	WELDED JOINT	SM-S	2"	80
G	1	B	SS	SA-102	72.304	WELDED JOINT	SM-S	2"	80
H	1	B	SS	SA-102	72.304	WELDED JOINT	SM-S	2"	80
J	4	B	SS	SA-102	72.304	WELDED JOINT	SM-S	2"	80
K	2	B	SS	SA-102	72.304	WELDED JOINT	SM-S	2"	80
L	32	B	SS	SA-102	72.304	WELDED JOINT	SM-S	2"	80
M	64	B	SS	SA-102	72.304	WELDED JOINT	SM-S	2"	80
N	1	A	SS	SA-102	72.304	WELDED JOINT	SM-S	2"	80
P	0	B	SS	SA-102	72.304	WELDED JOINT	SM-S	2"	80
Q	1	B	SS	SA-102	72.304	WELDED JOINT	SM-S	2"	80
R	1	B	SS	SA-102	72.304	WELDED JOINT	SM-S	2"	80
S	1	A	SS	SA-102	72.304	WELDED JOINT	SM-S	2"	80
T	1	B	SS	SA-102	72.304	WELDED JOINT	SM-S	2"	80
U	1	B	SS	SA-102	72.304	WELDED JOINT	SM-S	2"	80



ANSTEC
APERTURE
CARD

FOR INFORMATION ONLY

QA CONDITION 1

- NOTES:
- ALL WELD NUMBERS SHALL BE PRECEDED BY 11-31-
 - LAST WELD NO. 17
 - REF. LAYOUT DWG. 11-31-10000
 - REF. FLOW DWG. 11-31-10000 (11-31-10000) (11-31-10000)
 - CHECK FOR INTERFERENCE INSPECTION: 23, 11-31-10000
 - ALL WELD JOINT NO. SHALL BE PRECEDED BY 11-31-10000
 - WELD "7" IS CLASS "C"

NO.	REVISION	DATE	BY	QA CONDITION 2
5	REV. ITEM 1			DUNE POWER COMPANY CAMBRIA NUCLEAR STATION
4	ADD WELD NO. 17			TITLE CONTAINMENT SPRAY SYSTEM TO UNIT SPRAY PP 2 B
3	REVISE ITEM 1			SVS 115 LINE NO. 51 DUNE CLASS 1
2	REV. ITEMS L, M			PIPING SPEC. 15 3012
1	ALL FOR CONST.			LOCATION ALA. BLDG. (A-2)
				DWG. NO. CN-2NS-31 REV. NO. 5

DUNCAN-PARSONS, INC., CHARLOTTE 700

PDR RIDS

9403140335

