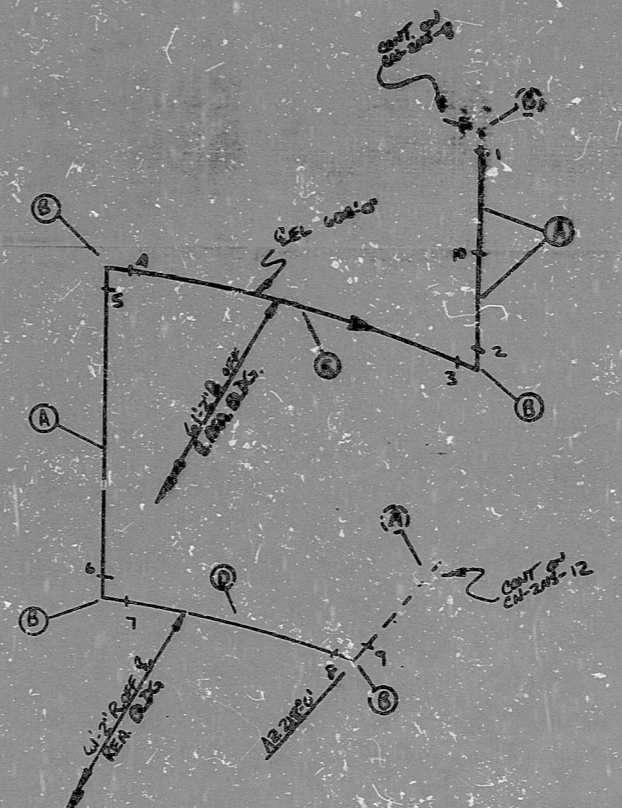


AC  
VERIFIED  
SYS. 2NS17

CN-2NS-13 2

REV.	DATE	BY	DESCRIPTION	QTY.	REQ.	QTY.	REQ.
A	07	SS	ADD TO PIPE	5'	40		
B	08	SS	ADD TO PIPE (W)	5'	40		
C	09						
D	10						
E	11						
F	12						
G	13						
H	14						
I	15						
J	16						
K	17						
L	18						
M	19						
N	20						
O	21						
P	22						
Q	23						
R	24						
S	25						
T	26						
U	27						
V	28						
W	29						
X	30						
Y	31						
Z	32						



NOTES:  
 1. ALL WELD NUMBERS SHALL BE PRECEDED BY 2NS13-  
 2. LAST WELD NO. 10  
 3. REF. LAYOUT DWG. CN-2491-NS019  
 4. REF. FLOW DWG. CN-2503-1.0 (H3)  
 5. CHECK FOR INSP. INSP. 190PSIA @ 190°F

FOR INFORMATION ONLY

NO.	REVISION	DATE	BY	CHKD.	APP.
2	REV. MAP. I.D. AT CONT.				
1	REV. ITEM "A"				
0	REV. ITEM "B"				
	REL. FOR CONSTR.				

QA CONDITION	I
BLUE POWER COMPANY	
CAROLINA NUCLEAR STATION	
TITLE	CONTAINMENT SPRAY SYS.
	TO CONTAINMENT SPRAY NOZ. ZLES
SY. NS	LINE NO. 09
	DWG. CLASS. B
PIPING SPEC.	PS. 151.2
LOCATION	SEA BLDG. (RAN)
DWG. NO.	CN-2NS-13
REV. NO.	2

ANSTEC  
APERTURE  
CARD



PDR RIDS

9603140269

