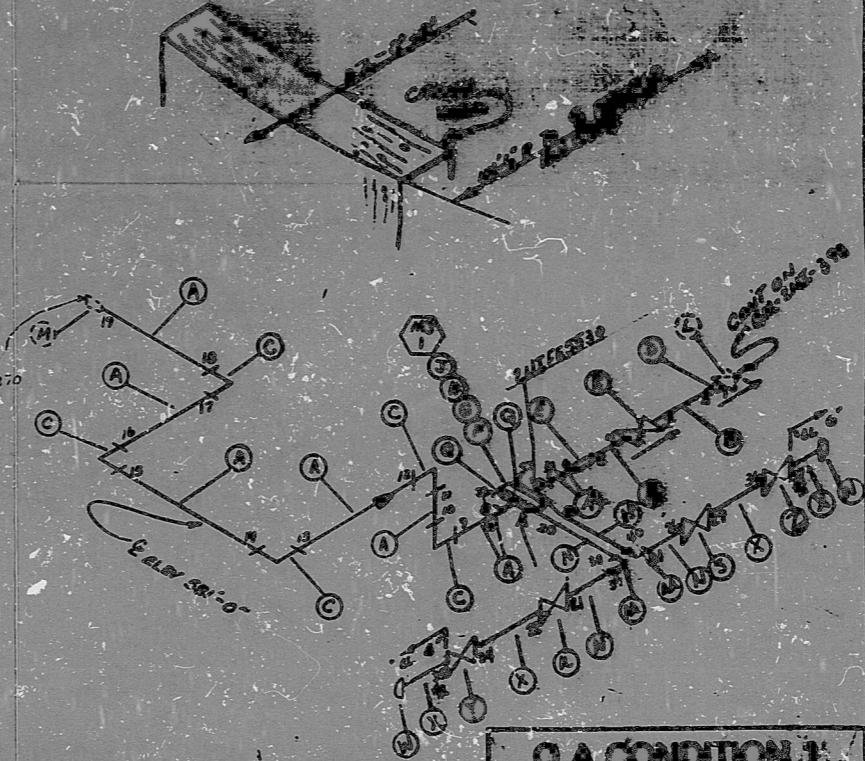


AO  
SYS ME  
20751

BILL OF MATERIALS									
ITEM NO.	QTY	UNIT	DESCRIPTION	GRADE	SIZE	WT.	VAL.	REMARKS	REV.
A	16	B	SS 304 TP304 PIPE	SS	2"	160			
B	1	B	SS 304 TP304 PIPE	SS	1 1/2"	160			
C	5	B	SS 304 TP304 90° ELL (SW)	SS	2"				
D	1	B	SS 304 TP304 RED INSERT (SW)	SS	2"				
E	1	B	SS 304 TP304 RED COUPLER (SW)	SS	2"				
F	1	B	SS 304 TP304 RED COUPLER (SW)	SS	2"				
G	2	B	SS 304 TP304 GASKET (SW)	SS	2"				
H	8	A	AS 1010 B7 STUDS (BS)	AS	1/2"				
J	16	B	CS 1010 B7 HEX NUTS (BS)	CS	1/2"				
K	1	B	2N1-155 (GL) (SW)	SS	2"				
L	0	A	SS 304 TP304 GASKET (SW)	SS	2"				
M	0	B	SS 304 TP304 RED COUPLER (SW)	SS	2"				
N	1	B	SS 304 TP304 PIPE	SS	2"				
P	0	B	SS 304 TP304 PIPE	SS	1 1/2"				
Q	2	B	SS 304 TP304 PLUG (SW)	SS	2"				
R	0	B	SS 304 TP304 RED INSERT (SW)	SS	2"				
S	1	A	AS 1010 B7 STUDS (BS)	AS	1/2"				
T	0	B	SS 304 TP304 PIPE	SS	2"				
U	1	A	AS 1010 B7 STUDS (BS)	AS	1/2"				
V	0	B	SS 304 TP304 PIPE	SS	2"				
W	2	B	SS 304 TP304 PIPE CAP	SS	2"				
X	2	B	SS 304 TP304 PIPE	SS	2"				
Y	1	A	AS 1010 B7 STUDS (BS)	AS	1/2"				
Z	1	A	AS 1010 B7 STUDS (BS)	AS	1/2"				
AA	2	B	SS 304 TP304 90° ELL (SW)	SS	2"				



ANSTEC  
APERTURE  
CARD

NOTES:  
 1. ALL WELD NUMBERS SHALL BE PRECEDED BY 2N1-349.  
 2. LAST WELD NO. 51  
 3. WELD LAYOUT DWG. CN-2491-N2091  
 4. WELD NO. 51  
 5. WELD NO. 52  
 6. WELD NO. 53  
 7. WELD NO. 54  
 8. WELD NO. 55  
 9. WELD NO. 56  
 10. WELD NO. 57  
 11. WELD NO. 58  
 12. WELD NO. 59  
 13. WELD NO. 60  
 14. WELD NO. 61  
 15. WELD NO. 62  
 16. WELD NO. 63  
 17. WELD NO. 64  
 18. WELD NO. 65  
 19. WELD NO. 66  
 20. WELD NO. 67  
 21. WELD NO. 68  
 22. WELD NO. 69  
 23. WELD NO. 70  
 24. WELD NO. 71  
 25. WELD NO. 72  
 26. WELD NO. 73  
 27. WELD NO. 74  
 28. WELD NO. 75  
 29. WELD NO. 76  
 30. WELD NO. 77  
 31. WELD NO. 78  
 32. WELD NO. 79  
 33. WELD NO. 80  
 34. WELD NO. 81  
 35. WELD NO. 82  
 36. WELD NO. 83  
 37. WELD NO. 84  
 38. WELD NO. 85  
 39. WELD NO. 86  
 40. WELD NO. 87  
 41. WELD NO. 88  
 42. WELD NO. 89  
 43. WELD NO. 90  
 44. WELD NO. 91  
 45. WELD NO. 92  
 46. WELD NO. 93  
 47. WELD NO. 94  
 48. WELD NO. 95  
 49. WELD NO. 96  
 50. WELD NO. 97  
 51. WELD NO. 98  
 52. WELD NO. 99  
 53. WELD NO. 100

FOR INFORMATION ONLY

7	WELD NO. 7
6	WELD NO. 6
5	WELD NO. 5
4	WELD NO. 4
3	WELD NO. 3
2	WELD NO. 2
1	WELD NO. 1
0	WELD NO. 0

**QA CONDITION I**  
**NUCLEAR SAFETY RELATED**

DATE: 11/1/68  
 TIME: 10:00 AM  
 LOCATION: REACTOR BUILD. (CRAC)  
 WELD NO.: CN-2491-N2091  
 REV. NO.: 1

PDR RIDS

9403140254

