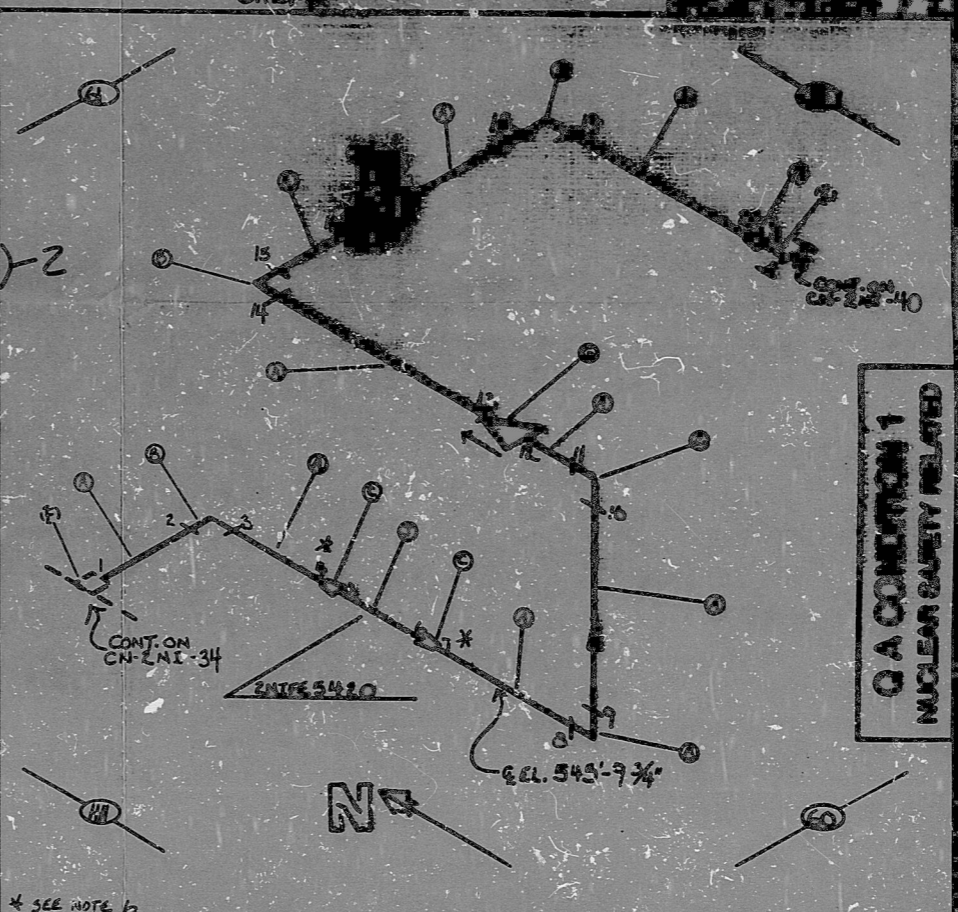


NO.	REVISED	DATE	BY

AO
VERIFIED
DATE
BY

BILL OF MATERIAL							
ITEM NO.	QUANTITY	CLASS	UNIT	DESCRIPTION	CONTR.	SIZE	REQ. NO.
1	89	B	SS	W/16" DIA. PIPE	SW'S	2"	160
2	5	B	SS	W/16" DIA. 90° ELB. (SW)	FOR	2"	80
3	2	B	SS	W/16" DIA. CONC. RED. (BW)	SW'S	3/4"	160
4	1	B	SS	W/16" DIA. CONC. RED. (BW)	SW'S	3/4"	80
5	0	B	SS	W/16" DIA. TEE (BW)	SW'S	3"	80
6	0	B	SS	W/16" DIA. TEE (SW)	FOR	2"	160
7	1	A	SS	2X1/4" (CR) SW	-	2"	-
8	1	A	SS	2X1/4" (GL) SW	-	2"	-
9	1	-	-	FLOW ORIFICE	-	3"	160



Q A CONDITION 1
NUCLEAR SAFETY RELATED

NOTES:
 1. ALL WELD NUMBERS SHALL BE PRECEDED BY 2NI 255.
 2. LAST WELD NO. 2
 3. REF. LAYOUT DWG. CN-2492-NI025 / VJ18183
 ZNI 542
 4. REF. FLOW DWG. CN-2562-12 (D-F-B)
 5. CHECK FOR INSERVICE INSPECTION (200-E, 1765-PSIA)
 6. TRANSITION I.A.W. MDG-25-1

FOR INFORMATION ONLY

NO.	REVISION
1	REV. NOTE 3
0	REL. FOR CONSTR.

Q A CONDITION 1
 DUNE POWER COMPANY
 CAMBRIA NUCLEAR STATION
 TITLE SAFETY INSPECTION SYSTEM
 TO REFUELING WATER STORAGE TANK
 STA. NI LINE NO. 06 DUNE CLASS B
 PIPING SPEC. PS. 1501.2
 LOCATION AUXILIARY BUILDING (A-4)
 DWG. NO. CN-2NI-255 REV. NO. 2

ANSTEC
APERTURE
CARD

PDR RIDS

9603140167

