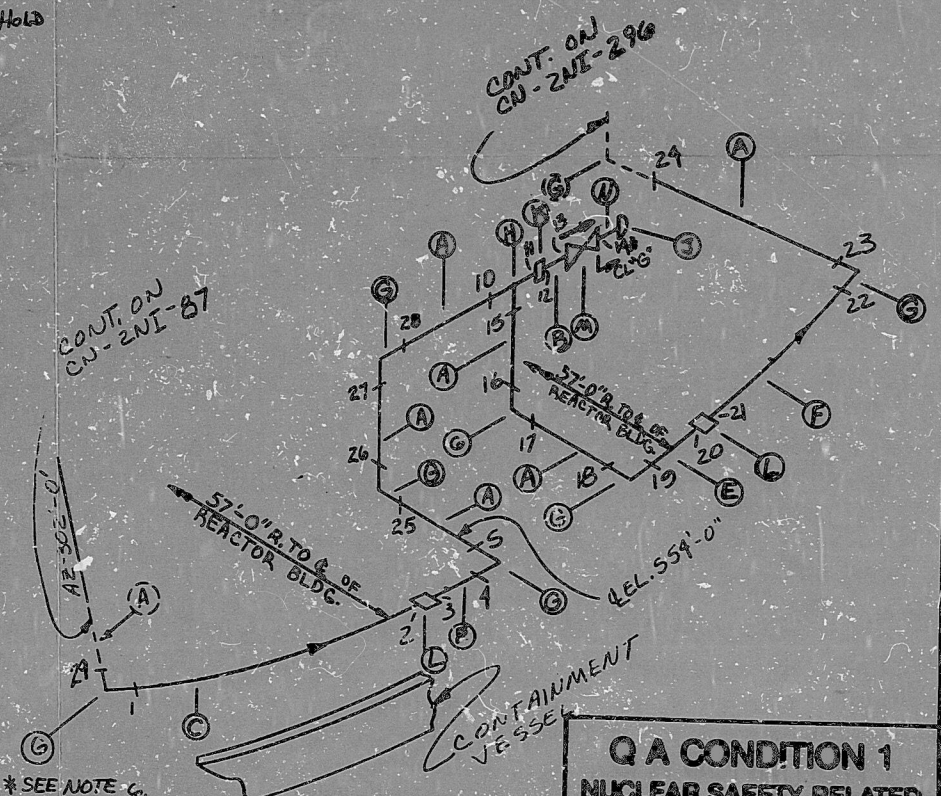


AO
 VERIFIED
 2/11/62
 2/11/62
 2/11/62

CN-2NI-281

QTY	UNIT	DESCRIPTION	GRADE	SIZE	WT.	REQ. WT.	REQ. QTY.	REQ. UNIT
A	27	B SS 316 2-20	PIPE	SMLS	2"	160		
B	1	B SS 316 2-20	PIPE	SMLS	1"	40		
C	176	B SS 316 2-20	BEND 281-AA	SMLS	2"	160		
D								
E	3	B SS 316 2-20	BEND 281-AB	SMLS	2"	160		
F	176	B SS 316 2-20	BEND 281-AC	SMLS	2"	160		
G	7	B SS 316 2-20	90° ELL	SW FOR	2"	160		
H	1	B SS 316 2-20	TEE	SW FOR	2"	160		
J	1	B SS 316 2-20	PIPE CAP THRD	FOR	1"	160		
K	1	B SS 316 2-20	RED. INSERT	SW FOR	2"	160		
L	2	B SS 316 2-20	FLUE COV. SW FOR	2"	160			
M	1	A SS	2" X 1/2" (GT) SW		1"			
N	1	B SS 316 2-20	NIPPLE	SMLS	1"	160		
P	3	B SS 316 2-20	BEND 281-DD	SMLS	2"	160		



NOTES:
 1 ALL WELD NUMBERS SHALL BE PRECEDED BY 2NI 281-
 2 LAST WELD NO. 29
 3 REF. LAYOUT DWG. CN-2991-NI 015
 4 REF. FLOW DWG. CN-2562-1.3 (H-9)
 5 CHECK FOR INSURANCE INSPECTION 2500PSIA @ 450°F
 6 WELD NO. 14 IS CLASS 'C'

FOR INFORMATION ONLY

NO.	REVISION
4	ADD WELD 29
3	ADD WELD 28
2	ADD WELD 27
1	REM WELD FROM A
0	REL. FOR CONST.

**Q A CONDITION 1
 NUCLEAR SAFETY RELATED**

Q A CONDITION I

DUNE POWER COMPANY
 CAMBRIA NUCLEAR STATION

TITLE SAFETY INJECTION SYS.
 TO COLD LEG D

SYS. NI - LINE NO. 12 - CURSE CLASS B

PIPING SPEC. PS. 2501.2

LOCATION REACTOR BUILDING

DWG. NO. CN-2NI-281

REV. NO. 4

ANSTEC
 APERTURE
 CARD

PDR RIDS

9603140160

