

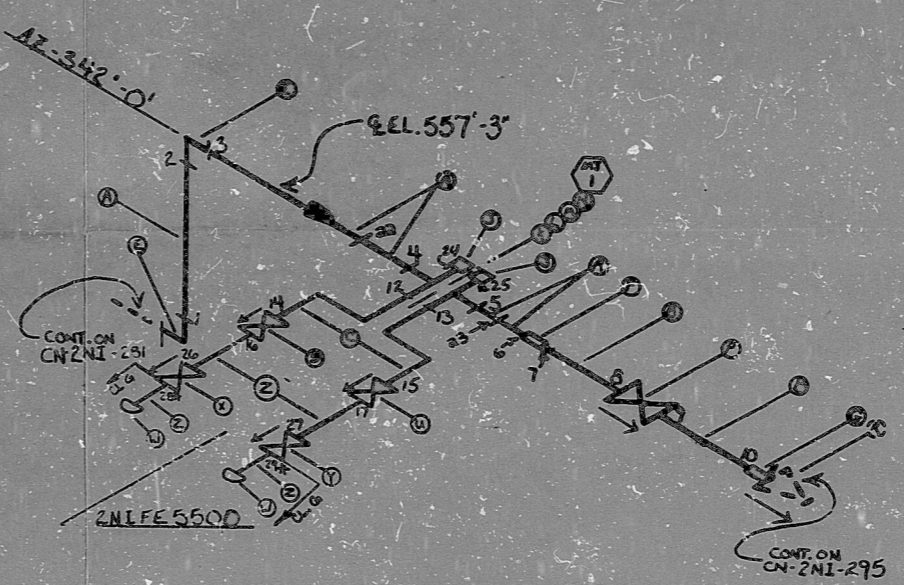
NE
2NIFE500

HIGH ENERGY

#820118

CN-2N1-296 5

BILL OF MATERIAL									
PART NO.	QUANTITY	CLASS	TYPE	GRADE	DESCRIPTION	CORR.	SIZE	QTY.	LOT NO.
A 12	0	SS	SASTH	TP304	PIPE	SMLS	2"	160	100000000000
B 1	0	SS	SASTH	TP304	PIPE	SMLS	1/2"	110	100000000000
C 1	0	SS	SASTH	TP304	PIPE	SMLS	3/4"	110	100000000000
D 0	0	SS	SASTH	TP304	PIPE	SMLS	1/2"	160	100000000000
E 2	0	SS	SA182	F304	90° ELL (SW)	FOR	2"	160	100000000000
F 1	0	SS	SA182	F304	RED. CPLG. (SW)	FOR	2" x 1/2"	160	100000000000
G 1	0	SS	SA182	F304	RED. INSERT (SW)	FOR	2" x 1/2"	160	100000000000
H 0	0	SS	SA182	F304	RED. INSERT (SW)	FOR	2" x 1/2"	160	100000000000
J 2	0	SS	SA182	F304	PLUG (SCRD)	FOR	3/4"	160	100000000000
K 1	0	SS	SA182	F304	ORIF. FLG. (SCRD)	FOR	2"	160	100000000000
L 2	0	SS	SA182	F304	GASKET (G-6)	---	---	250	100000000000
M 8	0	AS	SA182	B7	STWDS (B-S)	---	1.75"	---	100000000000
N 16	0	CS	SA182	B7	HEX NUTS (B-S)	---	1"	H.S.	100000000000
P 1	0	SS	---	---	2N1168 (GL) (SW)	---	1 1/2"	---	100000000000
Q 0	0	SS	---	---	2N1169 (CR) (SW)	---	2"	---	100000000000
S 1	0	SS	---	---	V2S TAPPED	---	3/4"	---	100000000000
T 0	0	SS	---	---	V2S TAPPED	---	1/2"	---	100000000000
U 1	0	SS	---	---	V2S TAPPED	---	3/4"	---	100000000000
V 0	0	SS	---	---	V2S TAPPED	---	1/2"	---	100000000000
W 2	0	SS	SA182	F304	PIPE CAP	---	3/4"	6000#	100000000000
X 1	0	SS	---	---	V2S TAPPED	---	3/4"	---	100000000000
Y 1	0	SS	---	---	V2S TAPPED	---	3/4"	---	100000000000
Z 1	0	SS	SASTH	TP304	PIPE	---	3/4"	100	100000000000



- NOTES:
- ALL WELD NUMBERS SHALL BE PRECEDED BY 2N1 296.
 - LAST WELD NO. 29
 - REF. LAYOUT DWG. CN-2491-N1014
2N1 550
 - REF. FLOW DWG. CN-2562-1.3 (G-11-9)
 - CHECK FOR INSERVICE INSPECTION (ASO-F, 2500-PH)
 - INSTRUMENTATION MAY BE ROTATED 180° AT CRAFF OPENING.
 - FLOW METER I.A.N. M-611
 - ALL MECH. JOINT NOS. SHALL BE PRECEDED BY 2N1 296
 - WELDS 28 AND 29 ARE CLASS 'C'

* SEE NOTE #1

FOR INFORMATION ONLY

Q A CONDITION 1
NUCLEAR SAFETY RELATED

NO.	REVISION	DATE	BY	CHKD.	DATE	BY
5	ADD NOTE 9					
4	REVISED DRAWING					
3	ADD WELDS 24 & 25					
2	REH. HOLD ITEM C					
1	ADD HOLD ITEM C					
0	REL. FOR CONST.					

Q A CONDITION 1

DURE POWER COMPANY
CARWISSA NUCLEAR STATION

TITLE SAFETY INSCTION SYSTEM
TO COLD LEG D

SYN NI - LINE NO. 12 - DURE CLASS E

PIPING SPEC. PS-2501.2

LOCATION REACTOR BLDG. (RTU)

DWG. NO. CN-2N1-296 REV. NO. 5

ANSTEC
APERTURE
CARD

PDR RIDS

9603140149

