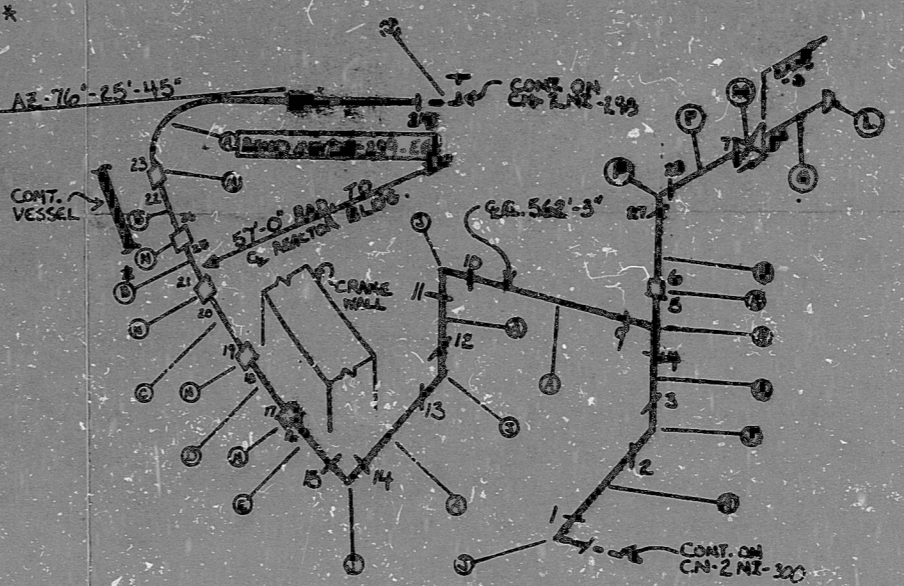


AO
 VERIFIED
 SVS 2/11/77
 RAS/PT
 DATE

#820110 CN-249-211 17

QTY	CLASSIFICATION	GRADE	SIZE	DESCRIPTION	UNIT	REQ	QTY	USE FOR
A	23	B	SS	ASTM TP304 PIPE	SM'S	2"	160	
E	17-4	B	SS	ASTM TP304 BEND	2NI-CP-AR	SM'S	2"	160
C	17-6	B	SS	ASTM TP304 BEND	2NI-CP-SS	SM'S	2"	160
U	17-6	B	SS	ASTM TP304 BEND	2NI-CP-SS	SM'S	2"	160
E	8-4	B	SS	ASTM TP304 BEND	2NI-CP-SS	SM'S	2"	160
F	1	B	SS	ASTM TP304 PIPE	SM'S	1"	160	
G	1	B	SS	ASTM TP304 NIPPLE (6" LG)	SM'S	1"	160	
H	1	B	SS	SA182 F304 TEE (SW)	FOR	2"	6000	
J	5	B	SS	SA182 F304 90° ELL (SW)	FOR	2"	6000	
K	1	B	SS	SA182 F304 RED. INSERT (SW)	FOR	2"x1"	6000	
L	1	B	SS	SA182 F304 PIPE CAP (THRD)	FOR	1"	6000	
M	1	A	SS	—	2NIH24 (CL) (SW)	—	1"	—
N	5	B	SS	SA182 F304 F/CP.L.S. (SW)	FOR	2"	6000	
P	1	B	SS	SA182 F304 90° ELL (SW)	FOR	1"	6000	



NOTES:
 ① ALL WELD NUMBERS SHALL BE PRECEDED BY 2NI 299.
 ② LAST WELD NO. 28
 ③ REF. LAYOUT DWG. CN-249-NI 050
 ④ REF. FLOW DWG. CN-2562-1.5 (H-2,4)
 ⑤ CHECK FOR UNDERVISE INSPECTION (250°F, 2500PSIA)
 ⑥ 1" OF PIPE ALLOCATED FOR BEND.
 ⑦ WELD NO. A IS CLASS G.
 ⑧ BEND # 249-211-A HAS BEEN CUT IN 20 TWO PAGES.

* SEE NOTE 6 * SEE NOTE 8
 ▲ SEE NOTE 7

FOR INFORMATION ONLY

Q A CONDITION 1
 NUCLEAR SAFETY RELATED

NO.	REVISION	DATE	BY	CHKD.	DATE
4	ADD CRANE WALL				
3	REV. WELD NO. 28				
2	ADD ITEM M				
1	REV. WELD ITEM 5				
0	REL. FOR CONST.				

Q A CONDITION 1
 DUKES POWER COMPANY
 CATAWBA NUCLEAR STATION
 TITLE SAFETY INSPECTION SYSTEM
 TO COLD LEG A
 SYS. NO. LINE NO. 12 DUKES CLASS B
 PIPING SPEC. BS. 2501.2
 LOCATION REACTOR BLDG. (RTU)
 DWG. NO. CN-249-211-211
 REV. NO. 4

ANSTEC
 APERTURE
 CARD

PDR RIDS

9603140147

