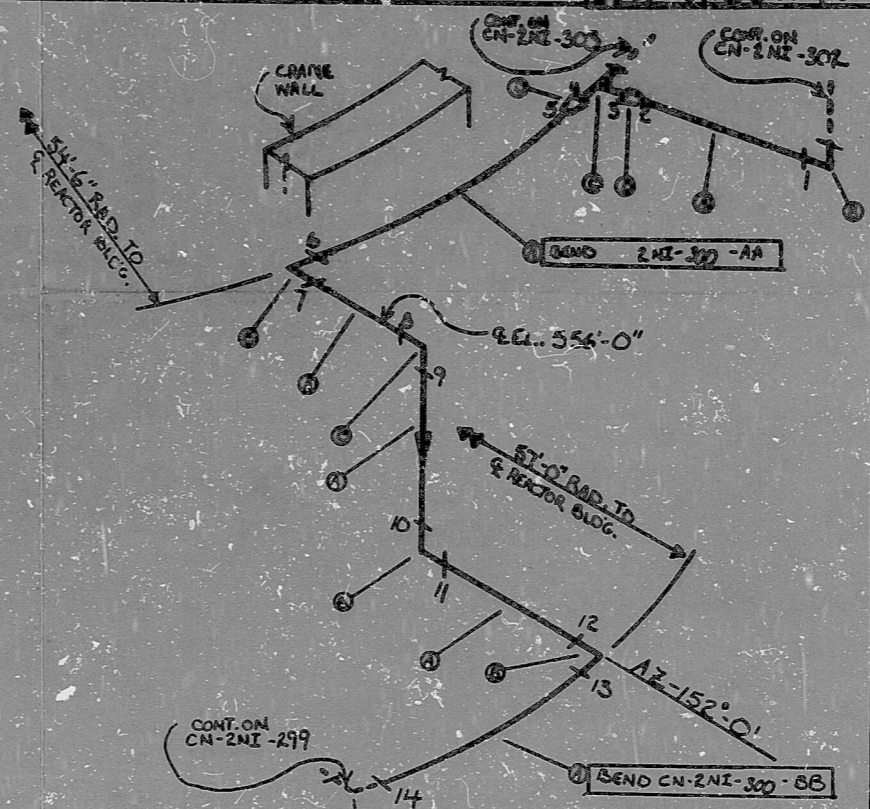


40
 2/15/77
 2/15/77

820118 CN-2NI-300

BILL OF MATERIAL									
WELD I.D.	CLASS	TYPE	DESCRIPTION	QTY	SIZE	WELD	WELD	WELD	WELD
A	31	B	SS 304 TP304 PIPE	SMLS	2"	160			
B	5	B	SS 304 90° ELL (SW)	FLR	2"	400			
C	1	B	SS 304 TEE (BW)	SMLS	4"	160			
D	2	B	SS 304 CONK. REC. (RW)	SMLS	4"x2"	160			



NOTES:
 ① ALL WELD NUMBERS SHALL BE PRECEDED BY 2NI300
 ② LAST WELD NO. 14
 ③ REF. LAYOUT DWG. CN-2491-NI035
 ④ REF. FLOW DWG. CN-2562-1.3 (1-3.4)
 ⑤ CHECK FOR INSERVICE INSPECTION (450°F, 2500PSIA)
 ⑥ 10% OF PIPES ALLOCATED FOR BENDS

* SEE NOTE 6

FOR INFORMATION ONLY

Q A CONDITION 1
 NUCLEAR SAFETY RELATED

NO.	REVISION	DATE	BY	CHKD

Q A CONDITION 2
 DUNE POWER COMPANY
 CAGWABA NUCLEAR STATION
 TITLE SAFETY INSPECTION SYSTEM
 TO COLD LEG A
 SYS. NI LINE NO. 12 DUNE CLASS B
 PIPING SPEC. P.S. 2501.2
 LOCATION REACTOR BLDG. (RTU)
 DWS NO. CN-2NI-300 REV. NO. 0

ANSTEC
 APERTURE
 CARD

PDR RIDS

9003140145

