

10

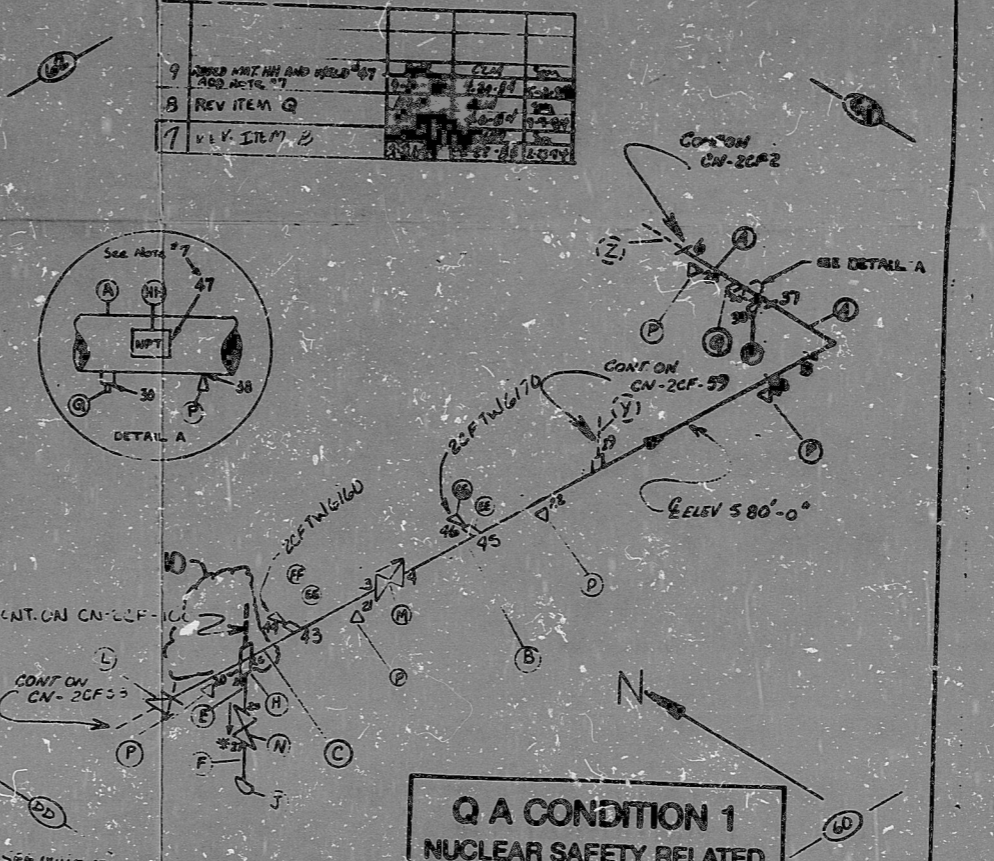
REV	REVISION	DATE	BY	CHKD	APPD

22-11
2CFH2, 2EH3
2CFI FOR INFORMATION ONLY 240-1

QTY	U.O.	CLASS	FORM	DESCRIPTION	QTY	DES	QTY	LOT NO.
A	1	CS						
B	1	CS						
C	1	CS						
D	2	B	CS SA105	B PIPE	SMLS	4"	80	
E	1	B	CS SA105	B PIPE	SMLS	1"	80	
F	1	B	CS SA105	NIPPLES 6" (SW)	SMLS	1"	80	
G	2	B	CS SA105	90° ELB (SW)	SMLS	4"	80	
H	1	B	CS SA105	HALF COUPL (SW) FOR	1"	3000		
J	1	B	CS SA105	CAP (SW) FOR	1"	3000		
K	0	B	CS SA105	HALF COUPL (SW) FOR	2"	3000		
L	1	B	CS SA105	2CF 49 (CR) (SW)	19"	80		
M	1	B	CS SA105	2CF 51 (GT) (SW)	18"	80		
N	1	A	CS SA105	2CF 135 (GL) (SW)	1"	3000		
P	0	B	CS SA105	Access Hole PLUGS	1 1/2"			
R	0	B	CS SA105	PLUG (SW) FOR	3/4"			
S	0	B	CS SA105	2CF 151 (GT) (SW)	4"	80		
T	0	B	CS SA105	B PIPE	SMLS	3/4"	80	
U	0	B	CS SA105	B PIPE	SMLS	1/2"	80	
V	0	B	CS SA105	REDINSERT (SW) FOR	1/2"	3000		
W	0	A	CS SA105	Tube Anaph	1 1/2"			
X	0	A	CS SA105	V285 TAP (SW)	1/2"			
Y	0	A	CS SA105	V265 TAP (SW)	1/2"			
Z	0	A	CS SA105	V285 TAP (SW)	1/2"			
EA	0	B	CS SA105	PAINT				
EB	0	B	CS SA105	HALF COUPL (SW) FOR	3/4"	3000		
EC	0	F	CS SA105	B PIPE	SMLS	3/4"	80	
ED	0	E	CS SA105	V285 TAP (SW)	1/2"			
EE	0	A	CS SA105	V285 TAP (SW)	1/2"			
EF	0	A	CS SA105	HICPLG (SW) FOR	1"	3000		
EG	0	A	CS SA105	TERMOWELL (SW)	1"			
EH	0	A	CS SA105	TERMOWELL (SW)	1"			
HH	1	CS		VENDOR SUPP STAMP				

NOTES:

- ALL WELD NUMBERS SHALL BE PRECEDED BY 2CF-57-
- LAST WELD NO. 47
- REF LAYOUT DWG. CN-241-CF-2
- REF FLOW DWG. CN-241-1
- CHECK FOR SERVICE INSPECTION PLUGS IN THE PIPE END OF WELD NO. 47 IS A TACK WELD



**Q A CONDITION 1
NUCLEAR SAFETY RELATED**

ANSTEC
APERTURE
CARD

NO.	REVISION	DATE	BY	CHKD	APPD
6	DELETE MATERIAL FROM AREA 25-42	11/11/91	RDH	RDH	RDH
5	ADD WELD 25-42	11/11/91	RDH	RDH	RDH
4	REV. WELD CHART	11/11/91	RDH	RDH	RDH
3	ADD WELD 25-42	11/11/91	RDH	RDH	RDH
2	ADD WELD 25-42	11/11/91	RDH	RDH	RDH
1	ADD WELD 25-42	11/11/91	RDH	RDH	RDH
0	RELEASE FOR CONST	11/11/91	RDH	RDH	RDH

DATE: 11/11/91	TIME: 11:00	BY: RDH	CHKD: RDH	APPD: RDH
Q A CONDITION 1				
DUKE POWER COMPANY				
CANDIDA NUCLEAR STATION				
TITLE: FEEDWATER SYSTEM				
TO STEAM GENERATOR 2C				
SYS: CF	LINE NO: 03	DATE CLASS: E		
PERM SPEC: PS 700.5				
LOCATION: REACTOR BLDG				
DWG NO: CN-2CF-57				
REV. NO: 10				

PDR RIDS

9603130315

