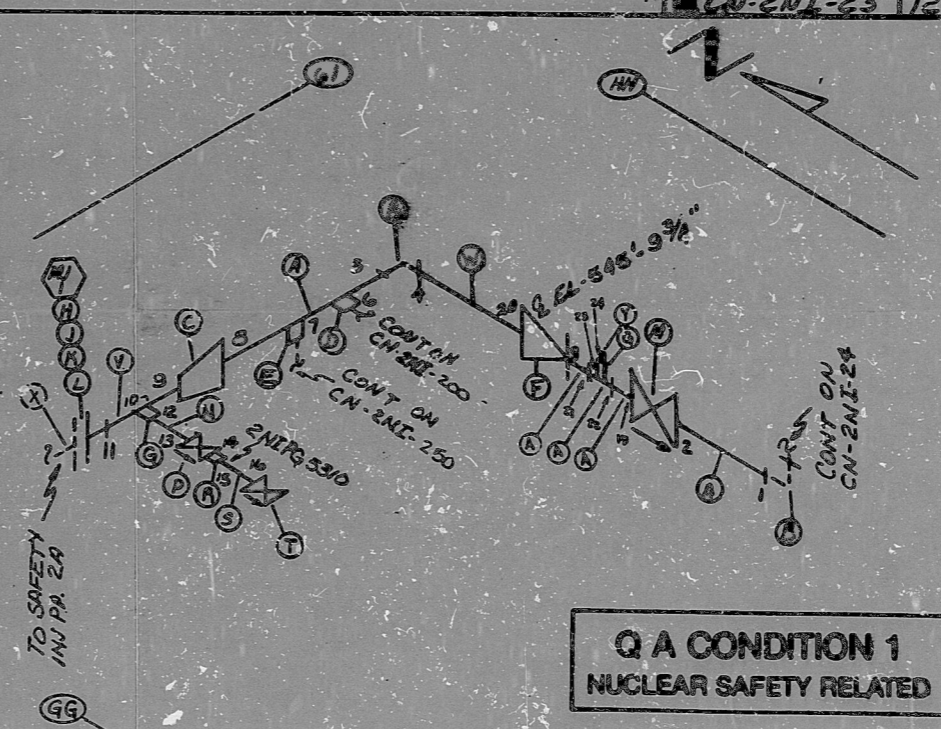


10
 VERIFIED
 2/21/74
 2/21/74 RATEO
 2/21/74

CN-2NI-23 12

BILL OF MATERIAL									
ALPH. ID.	QUANTITY	UNIT	GRADE	DESCRIPTION	COMP.	SIZE	COL.	LOT NO.	
A	12	A	SS	PIPE	SAWS	4"	80		
B	1	A	SS	FLANGE	SAWS	4"	80		
C	1	B	SS	RED COAT	SAWS	4"	80		
D	1	B	SS	WELD	SAWS	4"	80		
E	1	B	SS	WELD	SAWS	4"	80		
F	1	A	SS	WELD	SAWS	4"	80		
G	2	B	SS	WELD	SAWS	4"	80		
H	1	B	SS	WELD	SAWS	4"	80		
J	1	A	SS	WELD	SAWS	4"	80		
K	8	B	AS	STUDS (B-B)					
L	16	B	AS	HELNUTS (A-B)					
M	1	A	SS	WELD	SAWS	4"	80		
N	1	R	SS	WELD	SAWS	4"	80		
P	1	A	SS	WELD	SAWS	4"	80		
R	1	B	SS	WELD	SAWS	4"	80		
S	1	B	SS	WELD	SAWS	4"	80		
T	1	A	SS	WELD	SAWS	4"	80		
V	2	B	SS	WELD	SAWS	4"	80		
W	3	B	SS	WELD	SAWS	4"	80		
X	0	-	SS	SAFETY INJ. PUMP 2A					
Y	1	B	AS	PLUG					



Q A CONDITION 1
 NUCLEAR SAFETY RELATED

ANSTEC
 APERTURE
 CARD

FOR INFORMATION ONLY

NOTES:
 ① ALL WELD NUMBERS SHALL BE PRECEDED BY 2NI23
 ② LAST WELD NO. 24
 ③ REF. LAYOUT DWG. CN-2NI-23 / VLN # 9337 / W/217
 CN-1489 MI-3 / 2/15/74
 CN-2562-42 / J-6-9
 ④ ALL MECH JOINT NO'S SHALL BE PRECEDED BY 2NI23
 ⑤ CHECK FOR INSERVICE INSPECTION
 PRESS 1765 PSIA
 TEMP 200°F

NO.	REVISION	DATE	BY	CHKD.	APP.
7	REV. ITEM A				
6	DEL. WELD #19				
5	ADD WELDS 18 & 19				
4	REV ITEM R				
3	ADD CONST.				
2	ADD CONST.				
1	ADD LOOP NO				
0	REL FOR CONST				

NUCLEAR SAFETY RELATED	3/1
DUNE POWER COMPANY	
CASWELL NUCLEAR STATION	
TITLE	SAFETY INJ. SYSTEM
	FROM SAFETY INJ. PUMP 2A
SYN. NO.	LINE NO. 02
DATE CLASS	
WORKING SPEC.	PS. 1501.2
LOCATION	AUX. BLDG. A-43
DATE	CN-2NI-23
REV. NO.	12

PDR RIDS

9603130308

