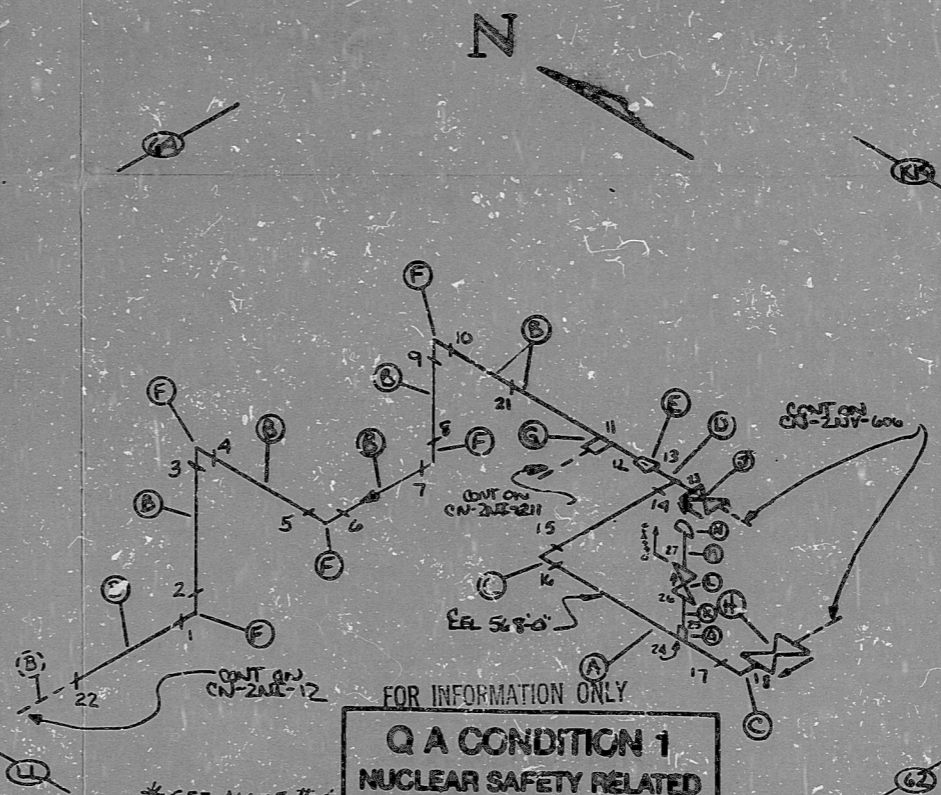


2117-05
 AO
 VERIFIED
 SYSTEM
 2117-05
 2117-05

CN-2492-106 7

BILL OF MATERIAL									
QTY	DESCRIPTION	CLASS	GRADE	SIZE	UNIT	QTY	UNIT	QTY	UNIT
A	16	1	SS	3/4"	PIPE	SMLS	4"	160	
B	22	0	SS	3/4"	PIPE	SMLS	5"	160	
C	2	0	SS	3/4"	WELD				
D	1	0	SS	3/4"	TEE	(BW)	4"	160	
E	1	0	SS	3/4"	TEE	(BW)	4"	160	
F	5	0	SS	3/4"	WELD				
G	2	0	SS	3/4"	WELD				
H	1	A	SS	3/4"	TEE	(BW)	4"	160	
J	1	A	SS	3/4"	TEE	(BW)	4"	160	
K	1	B	SS	3/4"	WELD				
L	1	A	SS	3/4"	WELD				
M	1	B	SS	3/4"	WELD				
N	1	B	SS	3/4"	WELD				



ANSTEC
 APERTURE
 CARD

NOTES:
 1 ALL WELD NUMBERS SHALL BE PRECEDED BY 2NI106-
 2 LAST WELD NO. 27
 3 REF. LAYOUT DWG CN-2492-N1009
 4 REF. FLOW DWG CN-2362-1.0 (EF-3,4)
 5 CHECK FOR INSUR. INSP. TEMP 300°F PRESS 2750 PSIA
 6 REINSTATE AND TRANSFER WELD 2NI103-17 TO 2NI106-23
 PER WELD TRANSFER RECORD # 245.
 7 WELD 17 IS CLASS 'G'

*SEE NOTE #6
 7 ADD WELDS 24, 25, 26, 27, 28, 29, 30, 31, 32, 33, 34, 35, 36, 37, 38, 39, 40, 41, 42, 43, 44, 45, 46, 47, 48, 49, 50, 51, 52, 53, 54, 55, 56, 57, 58, 59, 60, 61, 62, 63, 64, 65, 66, 67, 68, 69, 70, 71, 72, 73, 74, 75, 76, 77, 78, 79, 80, 81, 82, 83, 84, 85, 86, 87, 88, 89, 90, 91, 92, 93, 94, 95, 96, 97, 98, 99, 100
 6 ADDED NOTE #6
 5 New Insur. & Insp. at 300 Inm
 4 ADDED WELD 17-22
 3 Add Weld 21. Add Cont.
 2 Add Weld From E
 1 Key Item A
 REL FOR CONSTR.

NO.	REVISION	DATE	BY	CHKD.
1				
2				
3				
4				
5				
6				
7				

NUCLEAR - SAFETY RELATED
 DUNE POWER COMPANY
 CAROLINA NUCLEAR STATION
 SAFETY INJECTION SYS.
 BORON INJECTION TANK 2 DISCHG
 SVE NI LINE NO. 02
 Piping SPEC. PS 2501.2
 LOCATION AUXILIARY BLDG (A-6)
 DWN. NO. CN-2NI-106
 REV. NO. 7

PDR RIDS

9603130240

