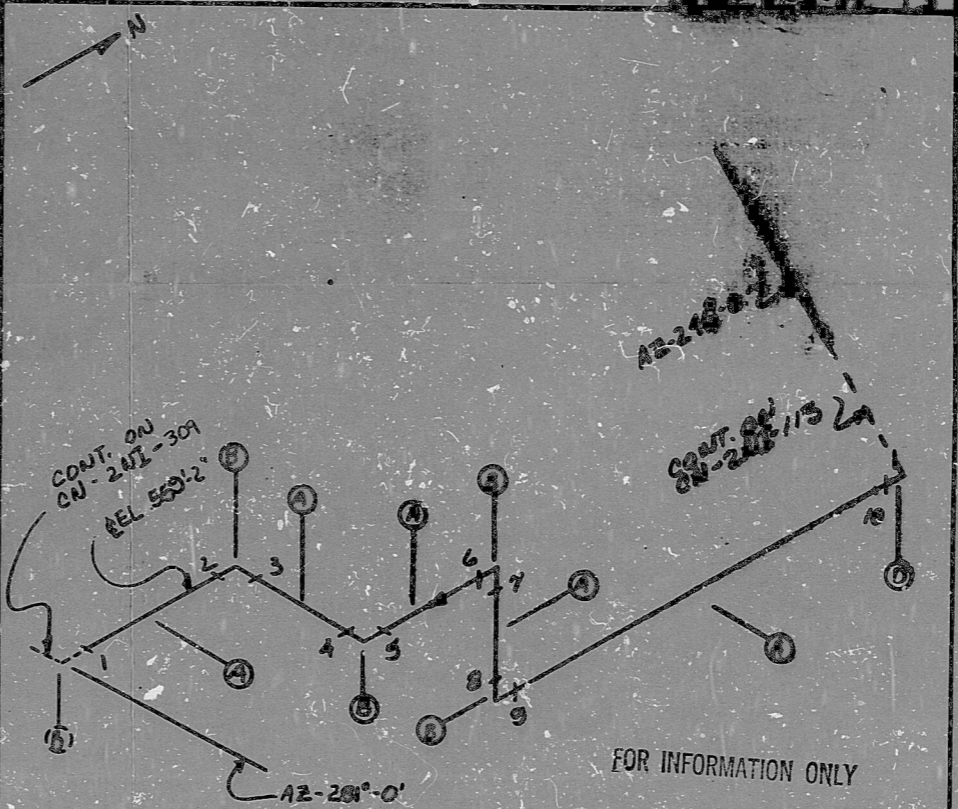


AO
VERIFIED
DATE
INITIALS

22,546

WELD ID	CLASS	TYPE	DESCRIPTION	CONTRACT	SIZE	DATE	LOT NO.
A 38	B	SS	PIPE	3"	10-0		
B 4	B	SS	PIPE	3"	10-0		
C 0	B	SS	PIPE	3"	10-0		
D 1	B	SS	PIPE	3"	10-0		



FOR INFORMATION ONLY

**Q A CONDITION 1
NUCLEAR SAFETY RELATED**

- NOTES:
- 1 ALL WELD NUMBERS SHALL BE PRECEDED BY 241119-
 - 2 LAST WELD NO. 10
 - 3 REF. LAYOUT DWG. CN-2491-NI084 VAF# 35591
 - 4 REF. FLOW DWG. CN-2462-10 (1-3,4)
 - 5 CHECK FOR INSERVICE INSPECTION 2750PSIA 300°F

NO.	REVISION	DATE	BY	CHKD.	APP.
3	ADD CONT.				
2	ADD STAIN TO SECTION C				
1	REV. CONT.				
0	REL FOR CONST.				

NUCLEAR SAFETY RELATED
 DUSE POWER COMPANY
 COLUMBIA NUCLEAR STATION
 TITLE SAFETY INJECTION SYSTEM
 TO COLD LEGS OF COOLANT
 LOOPS
 DWG. NO. CN-241-119
 Dwg. Class B
 DRAWING SPEC. PS 2401.2
 LOCATION REACTOR BUILDING (6TH)
 Dwg. No. 22,546

ANSTEC
APERTURE
CARD

PDR RIDS

9603130236

