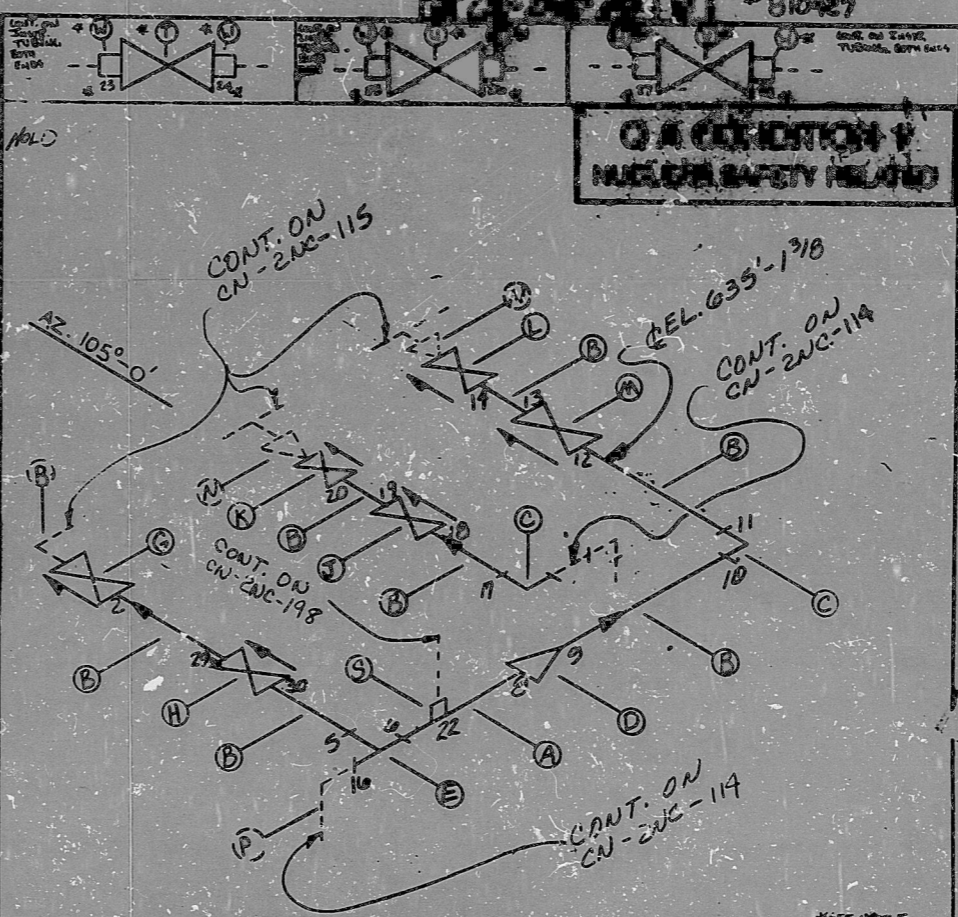


AO
VERIFIED
SYS 246 E2
246 T1, 246 T14

HIGH ENERGY

QTY	CLASS	SIZE	DESCRIPTION	COND.	WGT	LEN	CON. NO.
A	2	A	SS 316 TP 304 PIPE	SMLS	6"	160	
B	11	A	SS 316 TP 304 PIPE	SMLS	3"	160	
C	2	A	SS 316 TP 304 90° ELL	BW	SMLS	3"	160
D	1	A	SS 316 TP 304 CONC. RED BW	SMLS	6"x3"	160	
E	1	A	SS 316 TP 304 TEE RED	BW	SMLS	4"x3"	160
F	1	A	SS 316 TP 304 3/4" x 1/2" F304	FLAT	3/4"	160	
G	1	A	SS 316 TP 304 2NC 32 B(NC) BW		3"x4"	160	
H	1	A	SS 316 TP 304 2NC 31 B(GT) BW		3"	160	
J	1	A	SS 316 TP 304 2NC 33 D(GT) BW		3"	160	
K	1	A	SS 316 TP 304 2NC 34 A(NC) BW		3"x4"	160	
L	1	A	SS 316 TP 304 2NC 36 B(NC) BW		3"x4"	160	
M	1	A	SS 316 TP 304 2NC 35 B(GT) BW		3"	160	
N	0	A	SS 316 TP 304 CONC. RED BW	SMLS	6"x4"	90	
P	0	A	SS 316 TP 304 90° ELL	BW	SMLS	6"	160
R	0	A	SS 316 TP 304 90° ELL	BW	SMLS	4"	160
S	1	A	SS 316 TP 304 FLANG. COUPL. SW	FLR	2"	160	
T	1	F	ISOLATION VALVE (AV) SW		3"	160	
U	1	F	ISOLATION VALVE (AV) SW		3"	160	
V	1	F	ISOLATION VALVE (AV) SW		3"	160	
W	6	B	HA03 MP36 TUBE ADAP.	FLR	3/4"	160	



O A CONDITION I
NUCLEAR SAFETY RELATED

NOTES:
 1 ALL WELD NUMBERS SHALL BE PRECEDED BY 246 116 -
 2 LAST WELD NO. 246
 3 REF. LAYOUT DWG. CN-246-114-019 NOT 176 79
 4 REF. FLOW DING. CN-246-114 (F.G. 2, 3, 4)
 5 WELDS 23-28 ARE G. EXHIBIT 230. T-1 ARE REF. PER EXHIBIT 230. CN-246-114-019
 6 ISOLATION VALVES SUPPLIED BY ARISWELL. SEE INT. DIM. (A) FOR MEASUREMENT. TEMPERATURE: 600°F PRESSURE: 2400 PSIA

FOR INFORMATION ONLY

6	REV. 1	ADD ITEM 1-V
5	REV. 2	ADD ITEM 1-V
4	REV. 3	ADD ITEM 1-V
3	REV. 4	ADD ITEM 1-V
2	REV. 5	ADD ITEM 1-V
1	REV. 6	ADD ITEM 1-V
0	REL. FOR CONST.	

O A CONDITION I
 DURE POWER COMPANY
 CATAWBA NUCLEAR STATION
 TITLE REACTOR COOLANT SYS.
 PRESSURIZER -2 DISCHARGE
 SYS. NC LINE NO. 07 DURE CLASS D
 Piping Spec. PS 25011
 LOCATION REACTOR BLDG. (20P)
 DWG. NO. CN-246-114-019

ANSTEC
APERTURE
CARD

PDR RIDS

9603130230

