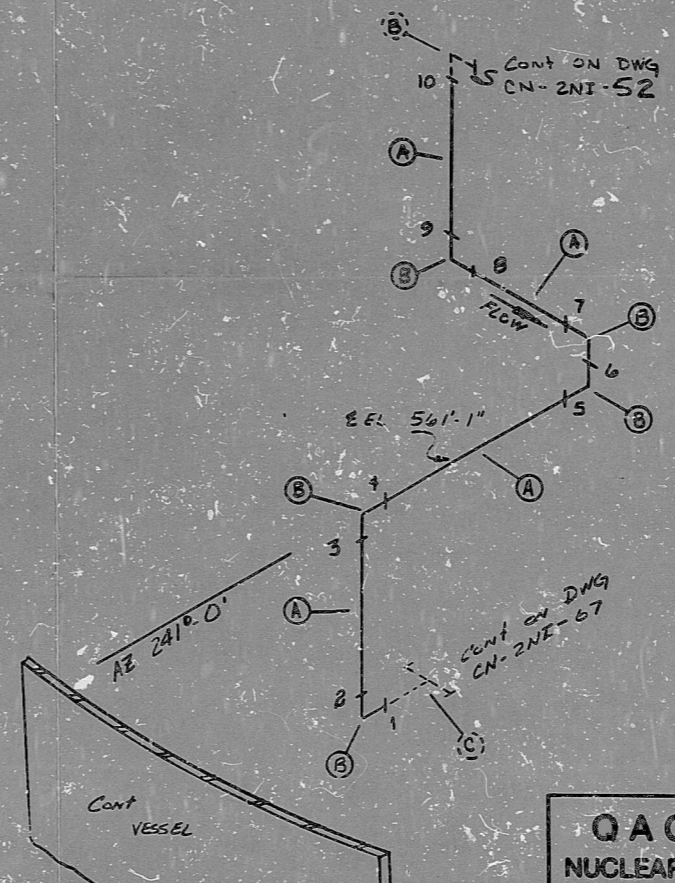


NO  
NI  
2NIF7

2262C

CN-2NI-68 2

BILL OF MATERIALS									
QTY	UNIT	CLASS	TYPE	DESCRIPTION	QTY	SIZE	WGT	FOR	REF
A	20'	B	SS	SA-37L TP304	PIPE	SMLS	4"	160	1000000
B	5	B	SS	SA-403 WP304	90° ELL	BW	SMLS	4"	160
C	0	B	SS	SA-403 WP304	TEE	BW	SMLS	4"	160



ANSTEC  
APERTURE  
CARD

NOTES:  
 ① ALL WELD NUMBERS SHALL BE PRECEDED BY 2NIF7-  
 ② LAST WELD NO. 10  
 ③ REF. LAYOUT DWG. CN-2491-NI-57  
 ④ REF. FLOW DWG. N-2562-13 (I-B-9)  
 ⑤ CHECK FOR INSERVICE INSPECTION TEMP - 650°F, PRESS - 2560 PSIA

FOR INFORMATION ONLY

NO.	REVISION	DATE	BY	CHKD	DATE	BY
2	REV. CONT. @ WELD N					
1	REV. CONT. BY USE BK 2-11-67					
0	REL FOR CONST					

Q A CONDITION 1  
NUCLEAR SAFETY RELATED

NUCLEAR SAFETY RELATED	PS
DUKE POWER COMPANY CALAWA NUCLEAR STATION	
TITLE SAFETY INJECTION SYSTEM FROM SAFETY INJ. PPS 2491.2 TO COLD LEGS A, B, C, D	
SYS. NI	LINE NO. 12
PIPE SPEC.	PS-2501.2
LOCATION	REACTOR BLDG (R-1)
DWG. NO.	CN-2NI-68
REV. NO.	2

PDR RIDS

9603130175

