


NO  
RECATL

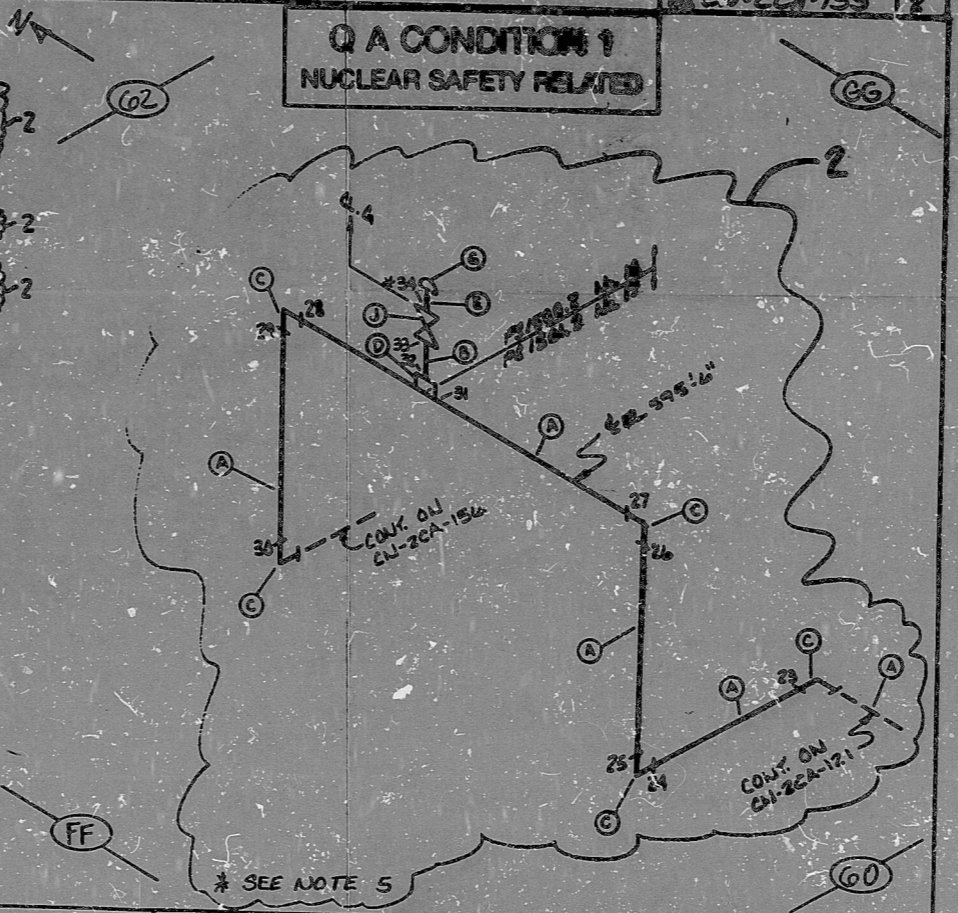
FOR INFORMATION ONLY

CU-2CA-155

BILL OF MATERIALS

QTY	DESCRIPTION	MATERIAL	SIZE	LENGTH	WEIGHT	LOT NO.
1	PIPE	SS	6"	80'		
1	PIPE	CS	1"	80'		
5	90° EL	SS	6"	80'		
1	PIPE C.P. SW FOR	CS	1"			
1	NIPPLE	SS	1"			
0	90° EL	CS	1"			
1	PIPE CAP SW FOR	CS	1"			
0	2CA182 (GL) SW	CS	1"			
1	2CA239 (GL) SW	CS	1"			

Q A CONDITION 1  
NUCLEAR SAFETY RELATED



ANSTEC  
APERTURE  
CARD

NOTES:

- ALL WELD NUMBERS SHALL BE PRECEDED BY 2CA.
- LAST WELD NO. 34.
- REF. LAYOUT DWG. CU-2491-CA001.
- REF. FLOW DWG. CU-2512-1.1 (1.3.9).
- WELD NO 34 IS CLASS "G".
- 1400 PSIA PRESSURE AND 1,000°F TEMPERATURE.


Q A CONDITION 1  
DUKE POWER COMPANY  
CATAWBA NUCLEAR STATION  
TITLE AUXILIARY FEEDWATER SYS.  
AUX. FEEDWATER TO STEAM GEN.  
BYD CA LINE NO. 10,17 DUKE CLASS B  
PIPING SPEC. P.S. 1500.2, 1501.2  
LOCATION REACTOR BLDG (ADH)  
DWG. NO. CU-2CA-155 REV. NO. 2

NO.	REVISION	DATE	DATE	DATE

© CARROLL INC.



PDR RIDS

9603060210

