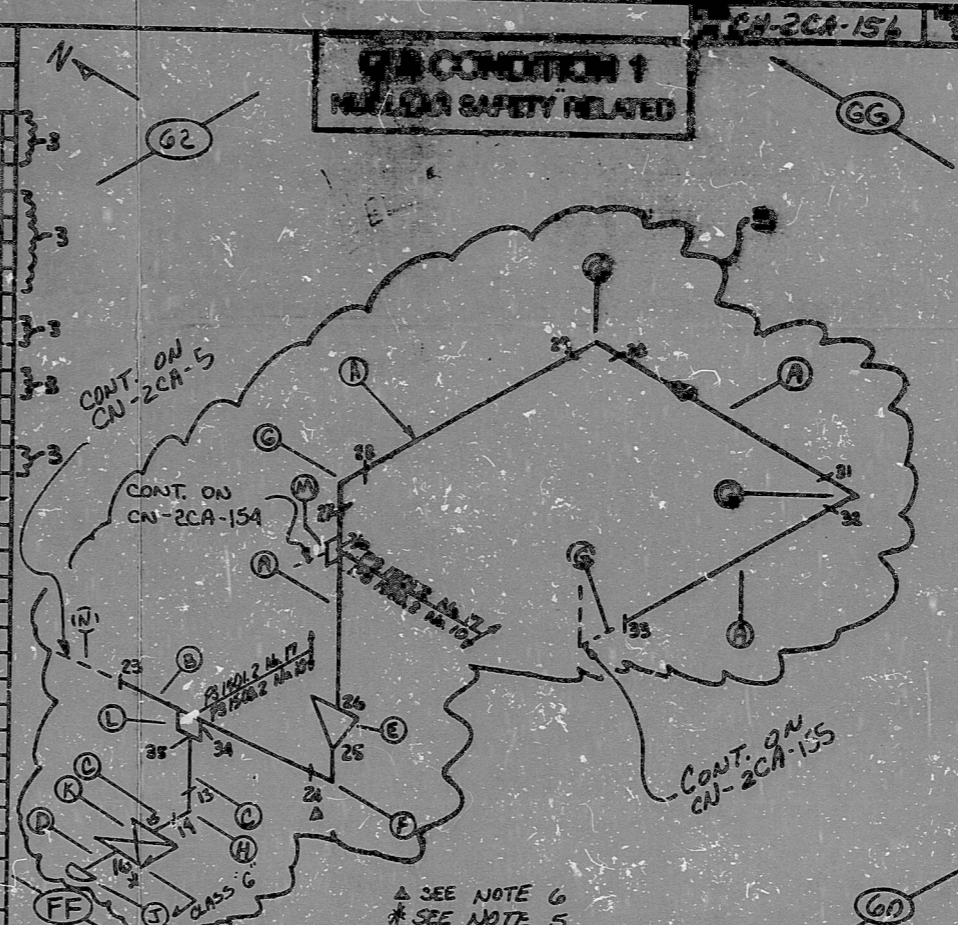


REV.	REVISION	DATE

FOR INFORMATION ONLY

AO
VERIFIED
SYS-2CA-1

UNIT	QUANTITY	CLASS	TYPE	DESCRIPTION	CONDT.	DES.	QTY.	LOT NO.
A	24	B	SS	PIPE	SALES	6"	80	
B	2	B	SS	PIPE	SALES	4"	160	
C	3	B	CS	B PIPE	SALES	1"	80	
D	1	B	SS	NIPPLE	SALES	1"	160	
E	1	B	SS	CONC. RED. SW	SALES	1"	160	
F	1	B	SS	90° ELL	SALES	1"	160	
G	3	B	SS	90° ELL	SALES	6"	80	
H	1	B	CS	90° ELL	SALES	1"	160	
J	1	B	CS	PIPE CAP	SALES	1"	160	
K	1	A	CS	2CA16A(GL) SW	SALES	1"	160	
L	1	B	CS	HALF CRG. SW	SALES	1"	160	
M	1	B	CS	HALF CRG. SW	SALES	2"	160	
N	0	SS		PENETRATION		4"	160	
P	0	A	CS	2CA23A(GL) SW		1"	160	



NOTES:
 ① ALL WELD NUMBERS SHALL BE PRECEDED BY 2CA-156-
 ② LAST WELD NO. IS CLASS "A"
 ③ REF. LAYOUT DWG. CN-2991-3A001
 ④ REF. FLOW DWG. CN-2597-11 (K.L. - 8.1)
 ⑤ WELD No. 15 IS CLASS "A"
 ⑥ TRANSITION I.A.W. MDS-FC-11
 ⑦ 1400 PSIA PRESSURE AND 600°F TEMPERATURE

NO.	REVISION	DATE	BY	CHKD.	DATE

QA CONDITION 1
 DURE POWER COMPANY
 CATAWBA NUCLEAR STATION
 TITLE AUXILIARY FEEDWATER SYS.
 AUXILIARY FEEDWATER TO
 STEAM GEN. 2C
 SYS. CA LINE NO. 107 CLASS B
 PIPING SPEC. P.S. 1500.2.1.15912
 LOCATION REACTOR BLDG. (RDB)
 DWG. NO. CN-2CA-156 REV. NO. 3

ANSTEC
APERTURE
CARD

PDR RIDS

9603060196

