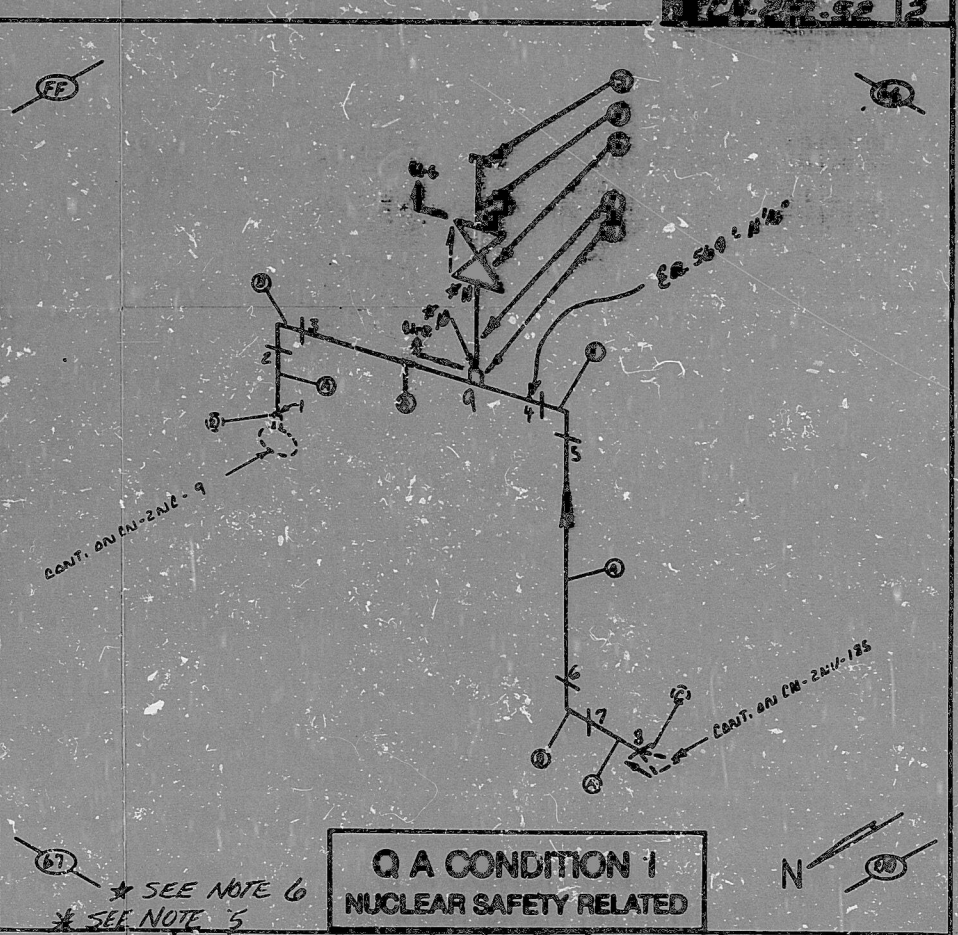


AO  
VERIFIED  
SYS. NS  
2NENR, 2NENR

HIGH ENERGY

EN-242-52 13

BILL OF MATERIALS									
ITEM NO.	QUANTITY	UNIT	SYMBOL	DESCRIPTION	COMP.	SIZE	WGT.	WELD NO.	WELD CLASS
A	10'	A	SS	PIPE	3795	3"	160		
B	3	A	SS	90° ELB (BW)	3795	3"	160		
C	0	A	SS	2NENR CR (BW)		3"	160		
D	0	A		WELD					
E	1	A	SS	FLANGE	SW	FOR	1"		
F	1	A	SS	PIPE	SW	FOR	1"		
G	1	A	SS	PIPE	SW	FOR	1"		
H	1	A	SS	FLANGE	SW	FOR	1"		
J	1	A	SS	FLANGE	SW	FOR	1"		



Q A CONDITION I  
NUCLEAR SAFETY RELATED

ANSTEC  
APERTURE  
CARD

- NOTES:
- ALL WELD NUMBERS SHALL BE PRECEDED BY ENC 52-
  - LAST WELD NO. 8
  - REF. LAYOUT DWG. EN-2991-NC077
  - REF. FLOW DWG. EN-2553-1.0 (C-7)
  - WELDS 12-15 CLASS "B"
  - WELDS 10-11 ARE CLASS "R"

FOR INFORMATION ONLY

NO.	REVISION	DATE	BY	CHKD.	APP.
2	ADD TRAYS E-3 AND DROPS AND WELDS 9-12				
1	REV. TITLE BLOCK				
0	REL. FOR CONST.				

Q A CONDITION I	<input checked="" type="checkbox"/>
DUKE POWER COMPANY	
CATAWBA NUCLEAR STATION	
REACTOR COOLANT SYSTEM	<input checked="" type="checkbox"/>
FRONT REGEN. NH <sub>2</sub> NORMAL LINE TO COLD LEG RA	<input checked="" type="checkbox"/>
SYS. <u>NC</u> LINE NO. <u>25</u> WELD CLASS <u>R</u>	
PERIOD SPEC. <u>PS 6201.1</u>	
LOCATION <u>REACTOR B-DG. (R-5)</u>	
DWG. NO. <u>EN-242-52</u> REV. NO. <u>2</u>	

DUNCAN-PARNELL, INC., CHARLOTTE, N.C.



PDR RIDS

9603050154

