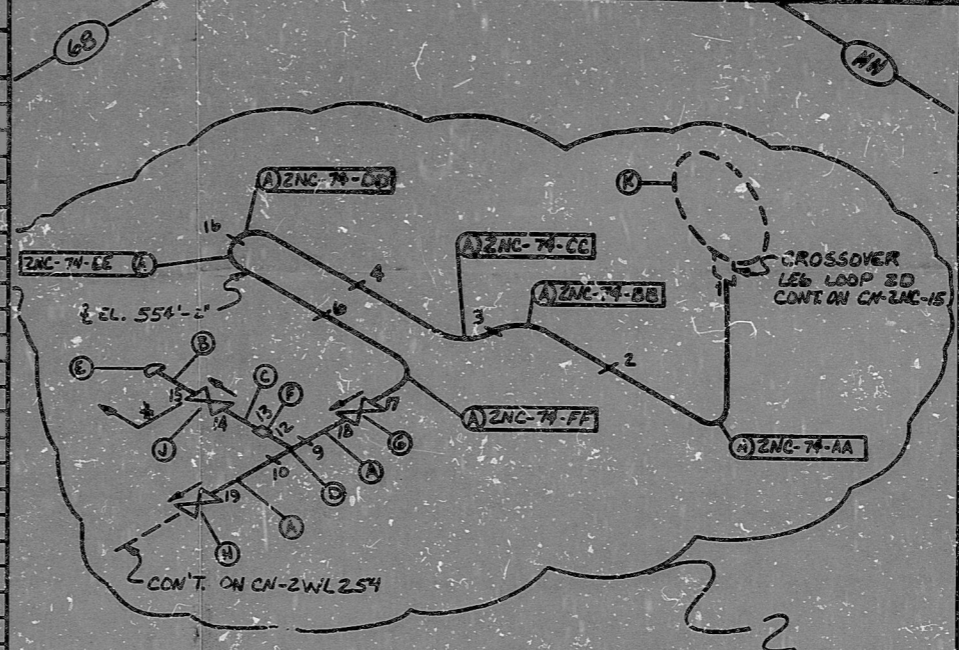


NO.	REVISION	DATE	BY	APP.

241.F3
241.H3, 241.M3
241.F.4, 241.T2

HIGH PRESSURE

ITEM NO.	QTY	UNIT	DESCRIPTION	CONC.	SIZE	LEN.	WT.	NOTES
A	33	A	SS 304/304	PIPE	2"	160		
B	1	A	SS 304/304	FLANGE	1/2"	160		
C	1	A	SS 304/304	PIPE	1/2"	160		
D	1	A	SS 304/304	TRF SW	2"	600		
E	1	A	SS 304/304	CAP	3/8"	600		
F	1	A	SS 304/304	RED ING SW	1 1/2"	600		
G	1	A	SS	ANCHOR (6x) SW	2"	600		
H	1	A	SS	ANCHOR (6x) SW	2"	600		
J	1	A	SS	ANCHOR (6x) SW	2"	600		
K	1	D	SS	CROSSOVER LEG LOOP SW	2"	600		



Q A CONDITION 1
NUCLEAR SAFETY RELATED

* SEE NOTE NO. 5

NOTES:
 1. ALL WELD NUMBERS SHALL BE PRECEDED BY 241.74
 2. LAST WELD NO. 13
 3. REF. LAYOUT DWG. 241-2491-110004 RA P84371
 4. REF. FLOW DWG. CN-2553-1.0 1.B.C. 4.18.
 5. WELD NO. 15 IS CLASS "G"
 6. 1/2" OF PIPE USED IN FABRICATION OF BELLY WIG. ALLOWANCE

FOR INFORMATION ONLY

NO.	REVISION	DATE	BY	APP.

Q A CONDITION	
DURE POWER COMPANY	
CARRIWA NUCLEAR STATION	
TITLE	
REACTOR COOLANT SYSTEM	
REACTOR COOLANT DRAIN TANK	
PUMPS	
SY. NO.	
LINE NO.	
DURE CLASS	
PUMPING SPEC.	
LOCATION	
DWG. NO.	
REV. NO.	

ANSTEC
APERTURE
CARD

PDR RIDS

9603040356

