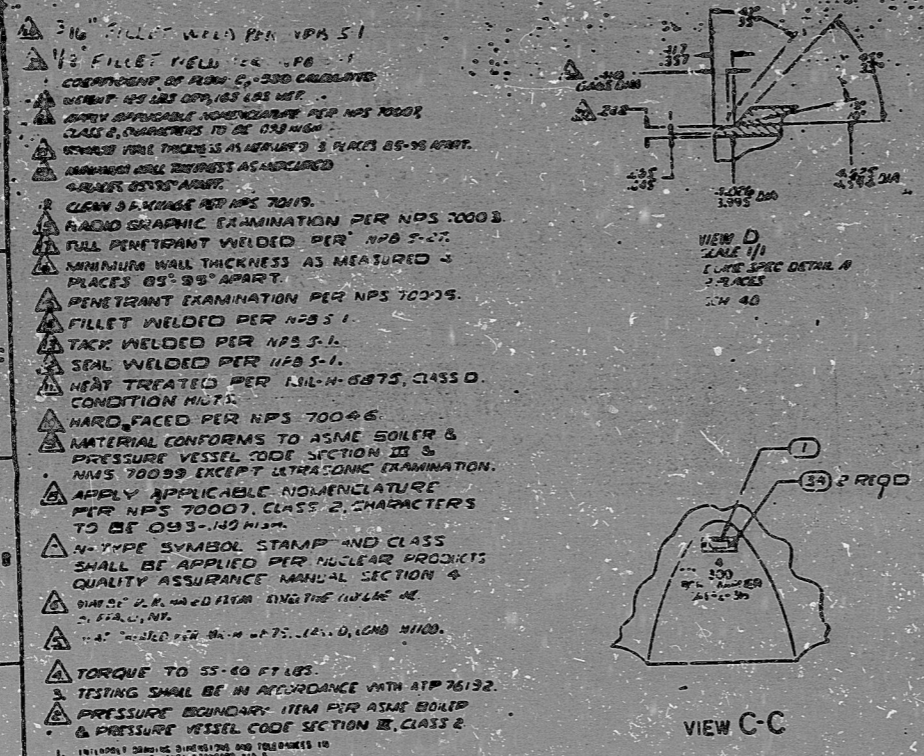
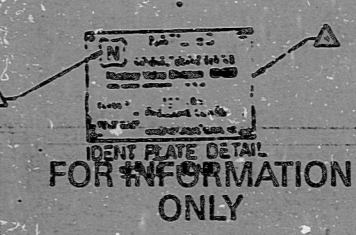
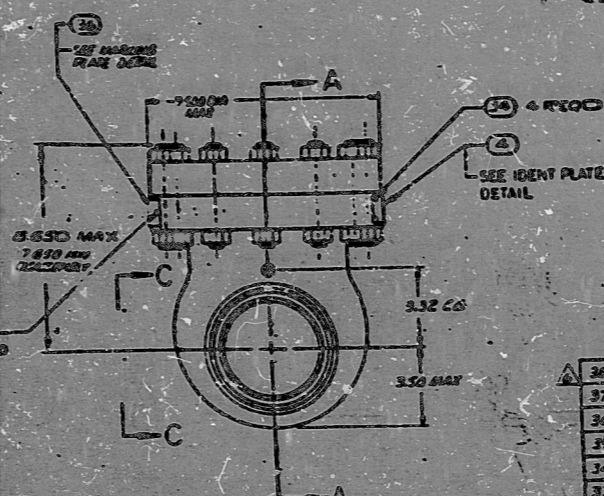
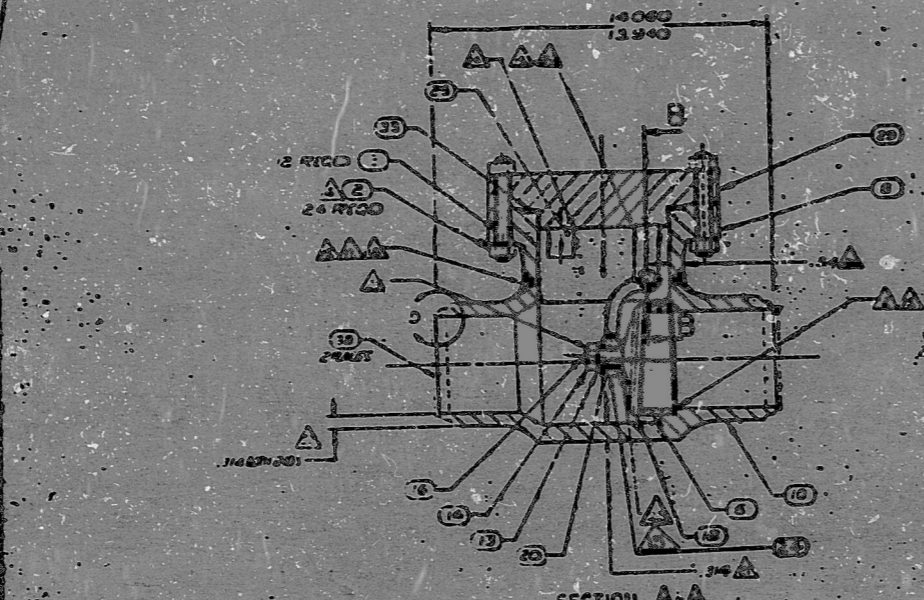


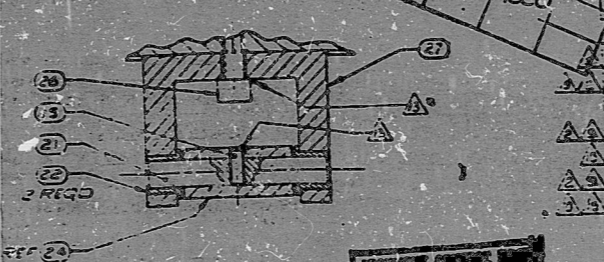
**ANSTEC  
APERTURE  
CARD**

REV	DATE	BY	CHKD
1	10/10/83	J. J. ...	...
2	11/15/83	J. J. ...	...
3	12/15/83	J. J. ...	...
4	01/15/84	J. J. ...	...
5	02/15/84	J. J. ...	...
6	03/15/84	J. J. ...	...
7	04/15/84	J. J. ...	...
8	05/15/84	J. J. ...	...
9	06/15/84	J. J. ...	...
10	07/15/84	J. J. ...	...
11	08/15/84	J. J. ...	...
12	09/15/84	J. J. ...	...
13	10/15/84	J. J. ...	...
14	11/15/84	J. J. ...	...
15	12/15/84	J. J. ...	...
16	01/15/85	J. J. ...	...
17	02/15/85	J. J. ...	...
18	03/15/85	J. J. ...	...
19	04/15/85	J. J. ...	...
20	05/15/85	J. J. ...	...
21	06/15/85	J. J. ...	...
22	07/15/85	J. J. ...	...
23	08/15/85	J. J. ...	...
24	09/15/85	J. J. ...	...
25	10/15/85	J. J. ...	...
26	11/15/85	J. J. ...	...
27	12/15/85	J. J. ...	...
28	01/15/86	J. J. ...	...
29	02/15/86	J. J. ...	...
30	03/15/86	J. J. ...	...
31	04/15/86	J. J. ...	...
32	05/15/86	J. J. ...	...
33	06/15/86	J. J. ...	...
34	07/15/86	J. J. ...	...
35	08/15/86	J. J. ...	...
36	09/15/86	J. J. ...	...
37	10/15/86	J. J. ...	...
38	11/15/86	J. J. ...	...
39	12/15/86	J. J. ...	...
40	01/15/87	J. J. ...	...
41	02/15/87	J. J. ...	...
42	03/15/87	J. J. ...	...
43	04/15/87	J. J. ...	...
44	05/15/87	J. J. ...	...
45	06/15/87	J. J. ...	...
46	07/15/87	J. J. ...	...
47	08/15/87	J. J. ...	...
48	09/15/87	J. J. ...	...
49	10/15/87	J. J. ...	...
50	11/15/87	J. J. ...	...
51	12/15/87	J. J. ...	...
52	01/15/88	J. J. ...	...
53	02/15/88	J. J. ...	...
54	03/15/88	J. J. ...	...
55	04/15/88	J. J. ...	...
56	05/15/88	J. J. ...	...
57	06/15/88	J. J. ...	...
58	07/15/88	J. J. ...	...
59	08/15/88	J. J. ...	...
60	09/15/88	J. J. ...	...
61	10/15/88	J. J. ...	...
62	11/15/88	J. J. ...	...
63	12/15/88	J. J. ...	...
64	01/15/89	J. J. ...	...
65	02/15/89	J. J. ...	...
66	03/15/89	J. J. ...	...
67	04/15/89	J. J. ...	...
68	05/15/89	J. J. ...	...
69	06/15/89	J. J. ...	...
70	07/15/89	J. J. ...	...
71	08/15/89	J. J. ...	...
72	09/15/89	J. J. ...	...
73	10/15/89	J. J. ...	...
74	11/15/89	J. J. ...	...
75	12/15/89	J. J. ...	...
76	01/15/90	J. J. ...	...
77	02/15/90	J. J. ...	...
78	03/15/90	J. J. ...	...
79	04/15/90	J. J. ...	...
80	05/15/90	J. J. ...	...
81	06/15/90	J. J. ...	...
82	07/15/90	J. J. ...	...
83	08/15/90	J. J. ...	...
84	09/15/90	J. J. ...	...
85	10/15/90	J. J. ...	...
86	11/15/90	J. J. ...	...
87	12/15/90	J. J. ...	...
88	01/15/91	J. J. ...	...
89	02/15/91	J. J. ...	...
90	03/15/91	J. J. ...	...
91	04/15/91	J. J. ...	...
92	05/15/91	J. J. ...	...
93	06/15/91	J. J. ...	...
94	07/15/91	J. J. ...	...
95	08/15/91	J. J. ...	...
96	09/15/91	J. J. ...	...
97	10/15/91	J. J. ...	...
98	11/15/91	J. J. ...	...
99	12/15/91	J. J. ...	...
100	01/15/92	J. J. ...	...



CROSS REFERENCE DATA TABLE

PART NO.	ITEM NO.	QTY	ORDER	REVISION
72190	47809	1	...	...



**APPROVED**  
DUKE POWER CO.  
DATE JUN 10 1988  
NUCLEAR SAFETY RELATED  
**QA CONDITION 1**

QTY	PART NO.	DESCRIPTION	REVISION
38	2	1063	CAPLUG
37	1	1115	ASTM A260 36 INCH PLATE HARDENED
36	1	1115	ASTM A260 36 INCH PLATE HARDENED
35	1	1115	ASTM A260 36 INCH PLATE HARDENED
34	1	1115	ASTM A260 36 INCH PLATE HARDENED
33	1	1115	ASTM A260 36 INCH PLATE HARDENED
32	1	1115	ASTM A260 36 INCH PLATE HARDENED
31	1	1115	ASTM A260 36 INCH PLATE HARDENED
30	1	1115	ASTM A260 36 INCH PLATE HARDENED
29	1	1115	ASTM A260 36 INCH PLATE HARDENED
28	1	1115	ASTM A260 36 INCH PLATE HARDENED
27	1	1115	ASTM A260 36 INCH PLATE HARDENED
26	1	1115	ASTM A260 36 INCH PLATE HARDENED
25	1	1115	ASTM A260 36 INCH PLATE HARDENED
24	1	1115	ASTM A260 36 INCH PLATE HARDENED
23	1	1115	ASTM A260 36 INCH PLATE HARDENED
22	1	1115	ASTM A260 36 INCH PLATE HARDENED
21	1	1115	ASTM A260 36 INCH PLATE HARDENED
20	1	1115	ASTM A260 36 INCH PLATE HARDENED
19	1	1115	ASTM A260 36 INCH PLATE HARDENED
18	1	1115	ASTM A260 36 INCH PLATE HARDENED
17	1	1115	ASTM A260 36 INCH PLATE HARDENED
16	1	1115	ASTM A260 36 INCH PLATE HARDENED
15	1	1115	ASTM A260 36 INCH PLATE HARDENED
14	1	1115	ASTM A260 36 INCH PLATE HARDENED
13	1	1115	ASTM A260 36 INCH PLATE HARDENED
12	1	1115	ASTM A260 36 INCH PLATE HARDENED
11	1	1115	ASTM A260 36 INCH PLATE HARDENED
10	1	1115	ASTM A260 36 INCH PLATE HARDENED
9	1	1115	ASTM A260 36 INCH PLATE HARDENED
8	1	1115	ASTM A260 36 INCH PLATE HARDENED
7	1	1115	ASTM A260 36 INCH PLATE HARDENED
6	1	1115	ASTM A260 36 INCH PLATE HARDENED
5	1	1115	ASTM A260 36 INCH PLATE HARDENED
4	1	1115	ASTM A260 36 INCH PLATE HARDENED
3	1	1115	ASTM A260 36 INCH PLATE HARDENED
2	1	1115	ASTM A260 36 INCH PLATE HARDENED
1	1	1115	ASTM A260 36 INCH PLATE HARDENED

ITEM NO.	QTY	PART NO.	DESCRIPTION
1	1	76190	VALVE ASSY
2	1	76190	4 INCH, 300 LB SWING CHECK VALVE CRES
3	1	76190	76190

CNN 1205-00-0166 001  
333-7-7

PDR RIDS

9603040292

