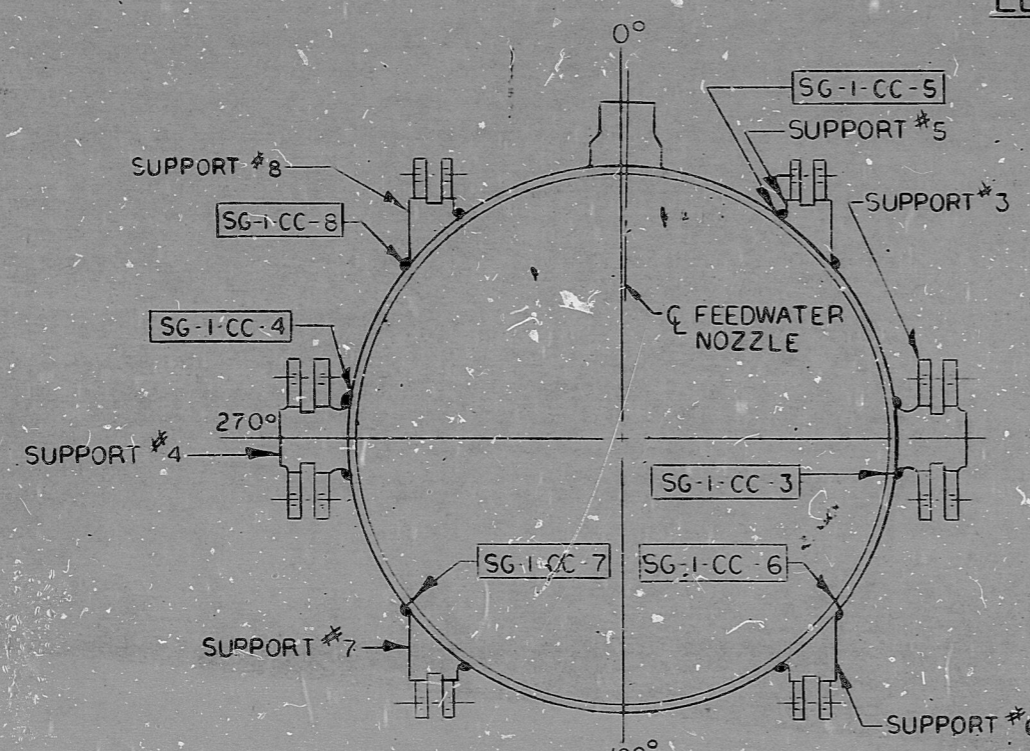
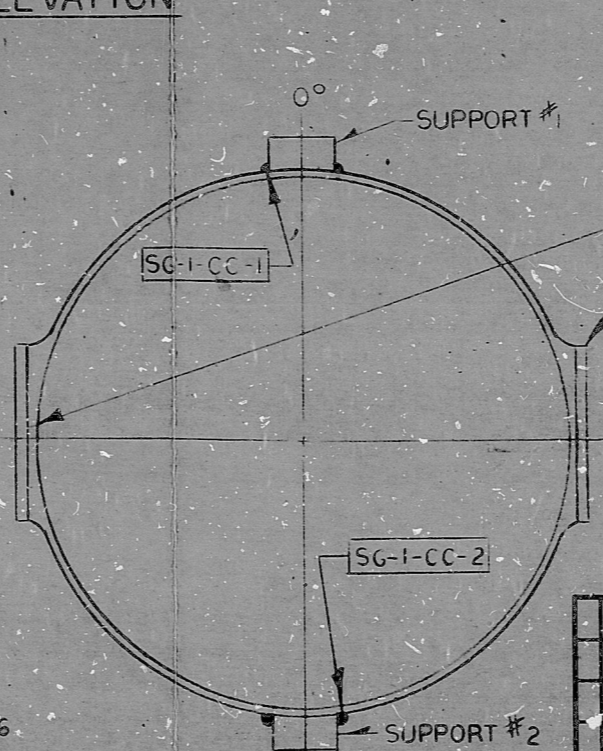


ELEVATION

TI APERTURE CARD



SECTION A-A



SECTION B-B

RELEASED FROM GFR CONTROL

REVISIONS DURING CONSTRUCTION		P.A. NO.

8805230119  
 QA

ZONE 2-1

REVISIONS		BY	CHK	APP	DATE	REASON
N/A	3					AS-BUILT PER DCR-M2-S-474-BB
N/A	2					AS-BUILT PER DCR-M2-S-463-BB
84-034	1					AS-BUILT PER DCR-M2-S-866-M

NORTH EAST UTILITIES SERVICE CO.  
 MILLSTONE UNIT 2  
 TITLE: STEAM GENERATOR No 1  
 INSERVICE INSPECTION PROGRAM  
 DATE: 12/15/75  
 P.A. NO. 25203-20163

SERV. CK. MECH. CK. ELEC. CK. CONC. CK. STRUC. CK. HYDR. CK. SERV. CK. MECH. CK. ELEC. CK. CONC. CK. STRUC. CK. HYDR. CK. SERV. CK. MECH. CK. ELEC. CK. CONC. CK. STRUC. CK. HYDR. CK. SERV. CK. MECH. CK. ELEC. CK. CONC. CK. STRUC. CK. HYDR. CK.

PDR RID'S

8805230119

