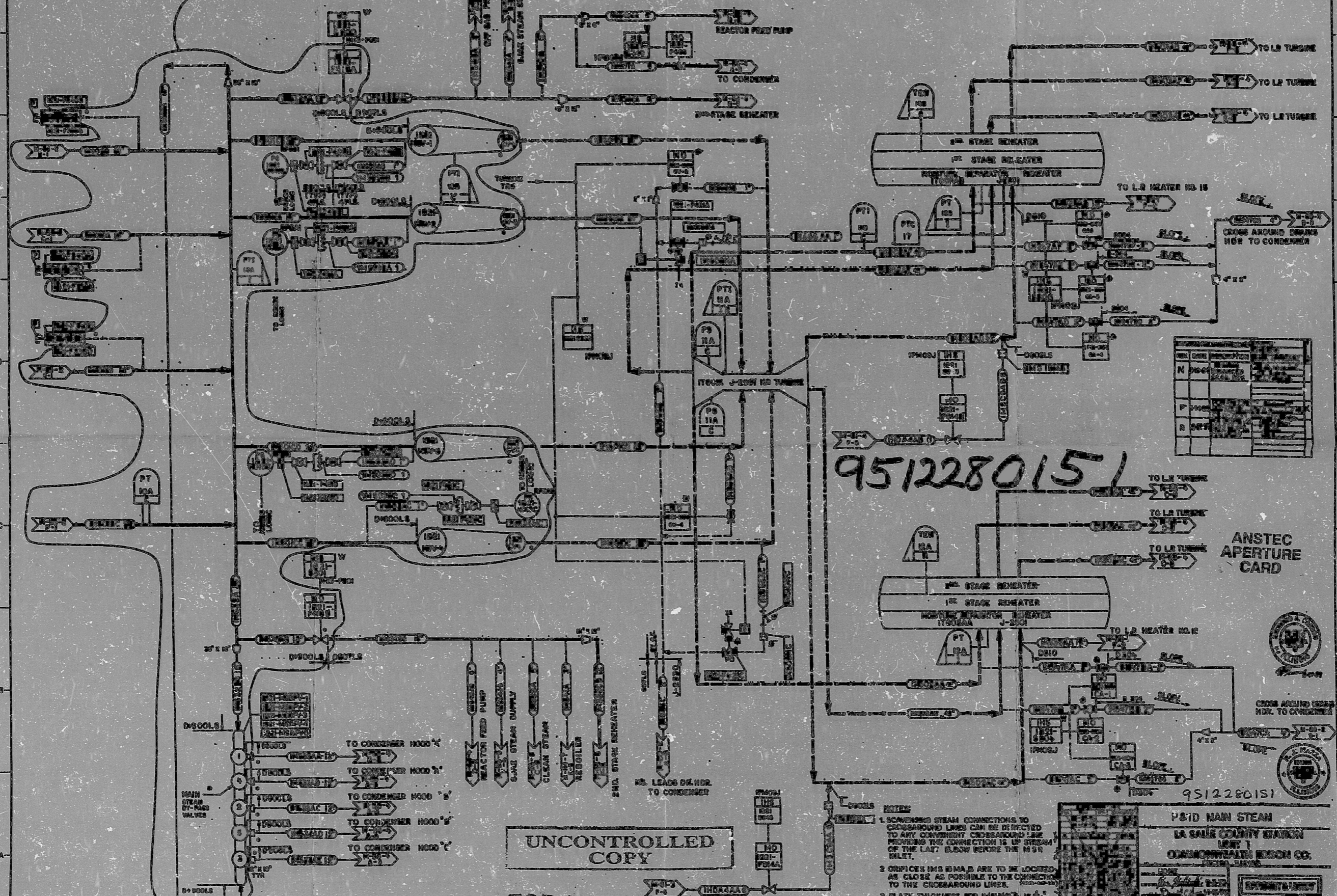


Critical Drawing

SS-N  
100000

SQUG



N			
P			
R			

9512280151

ANSTEC APERTURE CARD

UNCONTROLLED COPY

FOR REFERENCE ONLY

- NOTES:
1. SCRAMMED STEAM CONNECTIONS TO CROSSGROUND LINES CAN BE DETECTED TO ANY CONVENIENT CROSSGROUND LINE PROVIDED THE CONNECTION IS UP STREAM OF THE LAST ELBOW BEFORE THE MSR WLET.
  2. ORIFICES IN S B M A D ARE TO BE LOCATED AS CLOSE AS POSSIBLE TO THE CONNECTION TO THE CROSSGROUND LINE.
  3. PLATE THICKNESS FOR INSULATION IS 1/2" (SEE SPECIFICATIONS).

9512280151

PSID MAIN STEAM  
LA SALLE COUNTY STATION  
UNIT 1  
COMMONWEALTH EDISON CO.  
PACIFIC DIVISION

11-55 213 C F 9

HORIZONTAL DRAWING



PDR RIDS

9512280151

