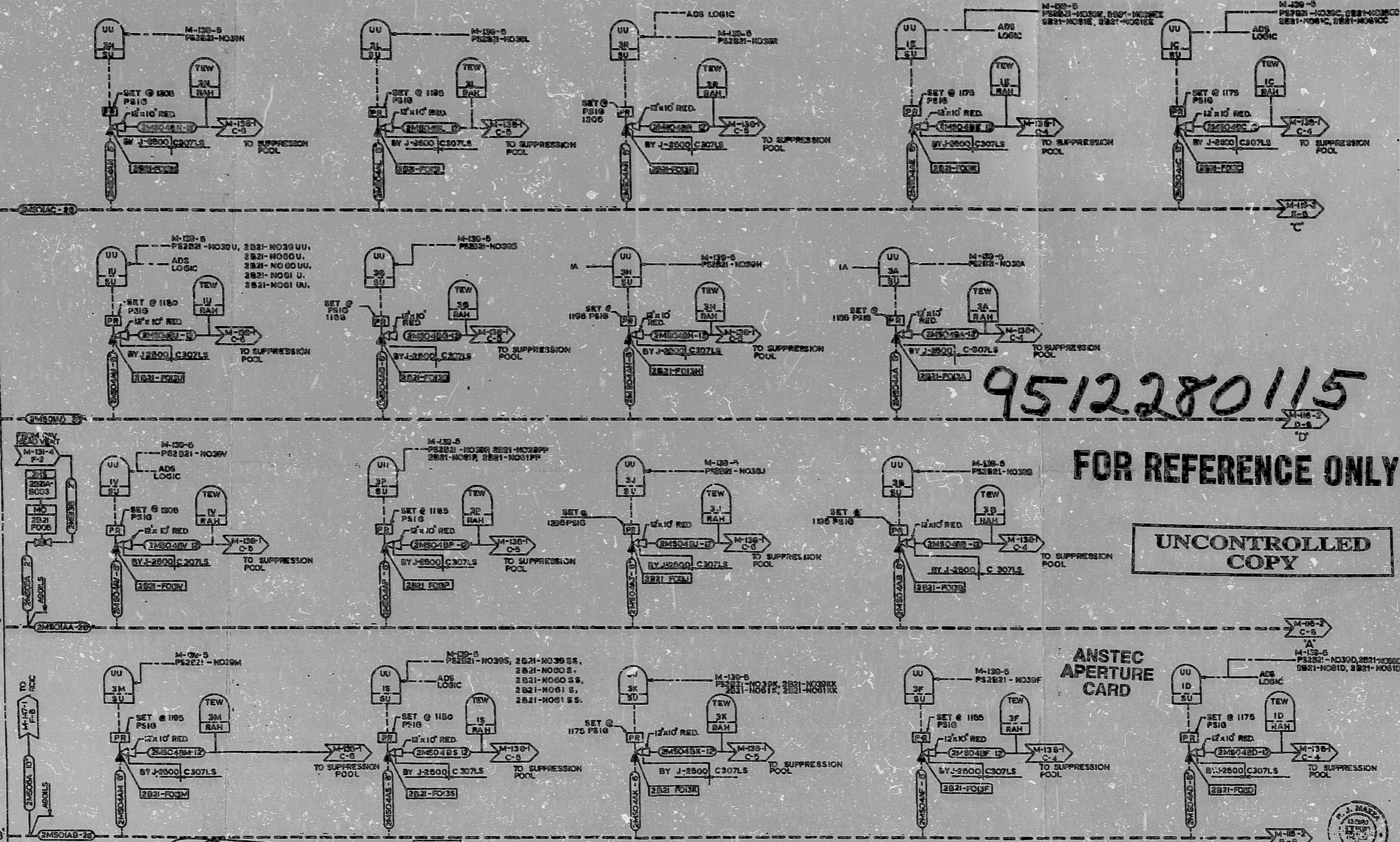
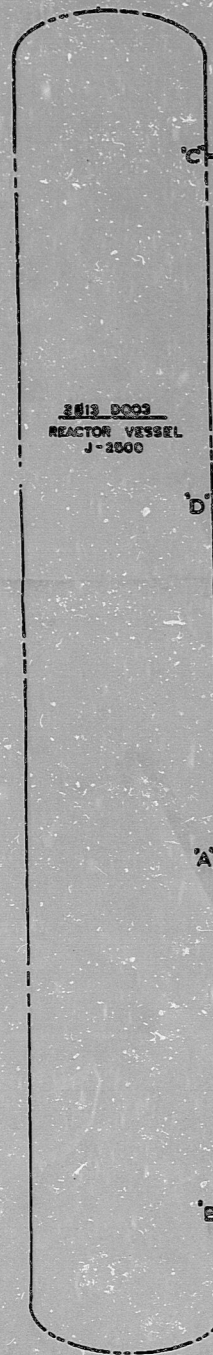


175 D11-M

2B3-0003
REACTOR
VESSEL
J-2500

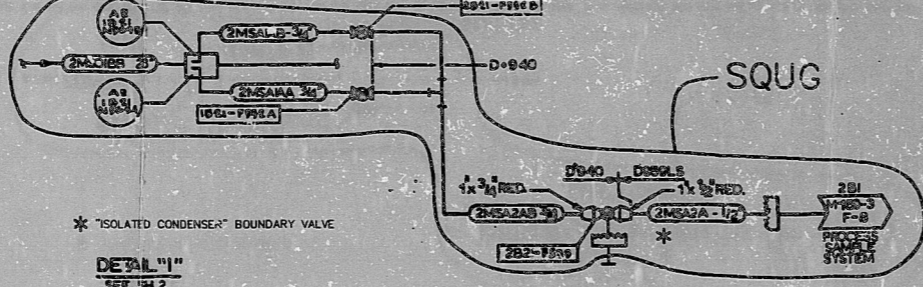


9512280115

FOR REFERENCE ONLY

UNCONTROLLED COPY

ANSTEC APERTURE CARD



NOTES:
1. ALL PIPING SHOWN AS BROKEN LINES AND ALL SAFETY RELIEF VALVES ARE FURNISHED BY J-2500 AND RETALLED BY J-2500.

NUCLEAR SAFETY RELATED ITEMS ARE SHOWN ON THIS DRAWING (FOR SAFETY CLASSIFICATION SEE PIPING, EQUIPMENT, VALVE, OR INSTRUMENT LIST)				P&ID MAIN STEAM	
				LA SALLE COUNTY STATION UNIT 2	
				COMMONWEALTH EDISON CO. CHICAGO, ILLINOIS	
NO.	DATE	DESCRIPTION	DESIGNED	APPROVED	REVISION
J	10-21-78	REVISED	A. [Signature]	[Signature]	10-21-78
H	04-18-79	REVISED	[Signature]	[Signature]	04-18-79
				M-110 SH1	



CRITICAL DRAWING

PDR RIDS

9512280115

