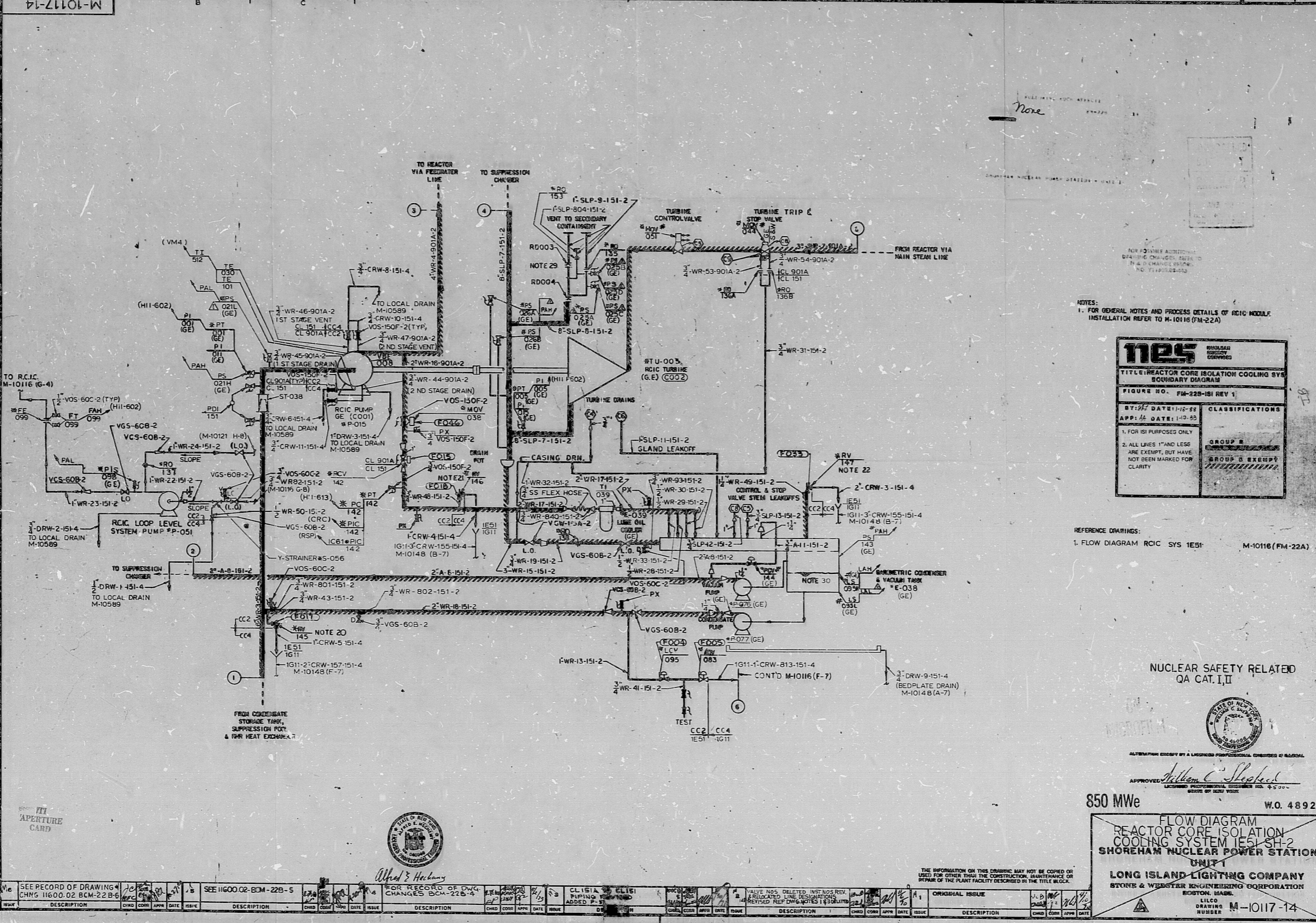


13	REV. NO.	DATE	DESCRIPTION
14	ISSUE	DATE	DESCRIPTION



NOTES:
 1. FOR GENERAL NOTES AND PROCESS DETAILS OF RCIC MODULE INSTALLATION REFER TO M-10116 (FM-22A)

nes	
TITLE: REACTOR CORE ISOLATION COOLING SYS BOUNDARY DIAGRAM	
FIGURE NO. FM-22B-151 REV 1	
BY: JH	DATE: 11-12-88
APP: H	DATE: 1-10-89
CLASSIFICATIONS	
1. FOR ISI PURPOSES ONLY	GROUP B
2. ALL LINES 1" AND LESS ARE EXEMPT, BUT HAVE NOT BEEN MARKED FOR CLARITY	GROUP B EXEMPT

REFERENCE DRAWINGS:
 1. FLOW DIAGRAM RCIC SYS 1ES1 M-10116 (FM-22A)

NUCLEAR SAFETY RELATED
 QA CAT. II

850 MWe W.O. 48923

FLOW DIAGRAM
 REACTOR CORE ISOLATION
 COOLING SYSTEM 1ES1 SH-2
 SHOREHAM NUCLEAR POWER STATION
 UNIT 1

LONG ISLAND LIGHTING COMPANY
 STONE & WEBSTER ENGINEERING CORPORATION
 BOSTON, MASS.
 LILCO
 DRAWING NO. M-10117-14

16	REV. NO.	DATE	DESCRIPTION
17	ISSUE	DATE	DESCRIPTION

ARCH	CONE	STEEL	MECH	INSTR	ELC	PLUMB	INS	PAV	CONC	WOOD	OTHER

S & W DWG. No. 11600.02-FM-22B-14
 8802050213

PDR RIDS

8802050213

