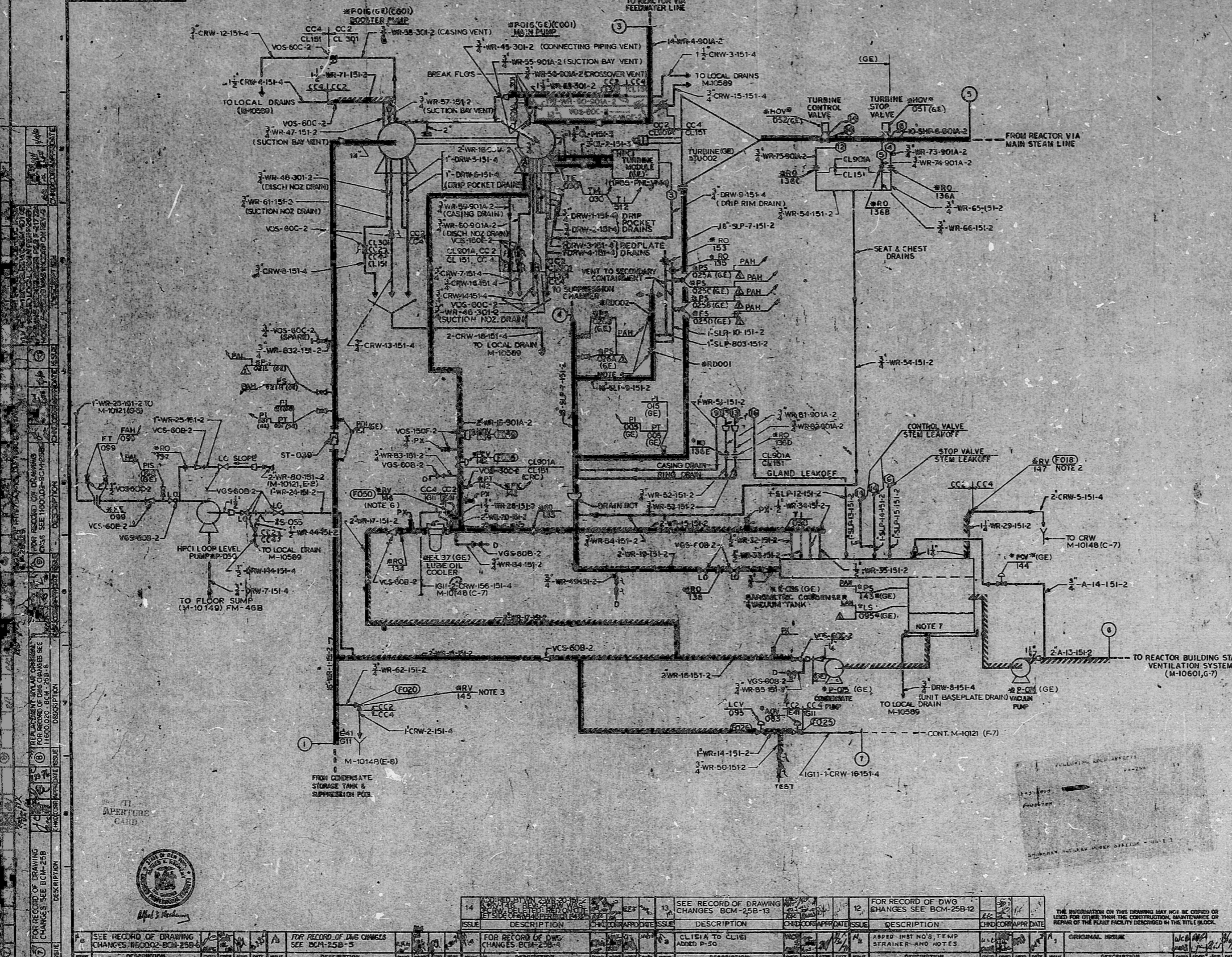


FOR RECORD OF DWG CHANGES  
SEE RECORD OF DWG CHANGES  
M-1012-2-14



**nps**

TITLE: BOUNDARY DIAGRAM  
 FIGURE NO.: FM-25B-18 (REV 3)

BY: 592 DATE: 1-18-88  
 APP: 44 DATE: 1-9-88

CLASSIFICATION:  
 GROUP B  
 GROUP D EXEMPT  
 GROUP Q EXEMPT

NOTES:  
 1. FOR ISI PURPOSES ONLY  
 2. ALL LINES 1" AND LITER ARE EXEMPT, BUT HAVE NOT BEEN MARKED PIPE CLARITY  
 3. DELETED

- NOTES:
- FOR GENERAL NOTES AND PHYSICAL DETAILS OF MFCI INSTALLATION REFER TO M-10121 (FM-25A)
  - RELIEF VALVE DESIGN SETPOINT - 70 psig
  - RELIEF VALVE DESIGN SETPOINT - 100 psig
  - RUPTURE DISKS RELIEVE AT 175 ± 10 psig
  - DELETED
  - RELIEF VALVE DESIGN SETPOINT - 45 psig
  - THE BAROMETER CONDENSER AND VACUUM TANK SHALL BE LOCATED SO THAT ITS WATER LEVEL IS BELOW THE BOTTOM OF THE TURBINE EXHAUST.
  - DE NOTES CONNECTIONS ON TURBINE ASSEMBLY OR INTERFACE WITH TURBINE VENDOR SUPPLIED PIPING. FOR DETAILS SEE TERRY STEAM TURBINE DWG. NO. 86121F.

CONTROL DOCUMENT RECEIVED

ON MICROFILM

NUCLEAR SAFETY RELATED QA CAT. II

APPROVED BY: *William E. Shaker*  
 LICENSED PROFESSIONAL ENGINEER NO. 45904

850 MWe W.O. 4892

FLOW DIAGRAM-HIGH PRESSURE COOLANT INJECTION SYSTEM (F41 SH)

SHOREHAM NUCLEAR POWER STATION UNIT 1

LONG ISLAND LIGHTING COMPANY  
 STONE & WEBSTER ENGINEERING CORPORATION

10122-14

FOR RECORD OF DRAWING CHANGES SEE BCM-25B-18

FOR RECORD OF DWG CHANGES SEE BCM-25B-18

FOR RECORD OF DWG CHANGES SEE BCM-25B-18

FOR RECORD OF DWG CHANGES SEE BCM-25B-18

NO.	DESCRIPTION	DATE	BY	CHKD	APPV	DATE	DESCRIPTION	NO.	DESCRIPTION	DATE	BY	CHKD	APPV	DATE	DESCRIPTION
14	REVISION						SEE RECORD OF DRAWING CHANGES BCM-25B-18	13	REVISION						FOR RECORD OF DWG CHANGES SEE BCM-25B-18
13	REVISION						SEE RECORD OF DWG CHANGES BCM-25B-18	12	REVISION						FOR RECORD OF DWG CHANGES SEE BCM-25B-18
12	REVISION						SEE RECORD OF DWG CHANGES BCM-25B-18	11	REVISION						FOR RECORD OF DWG CHANGES SEE BCM-25B-18
11	REVISION						SEE RECORD OF DWG CHANGES BCM-25B-18	10	REVISION						FOR RECORD OF DWG CHANGES SEE BCM-25B-18
10	REVISION						SEE RECORD OF DWG CHANGES BCM-25B-18	9	REVISION						FOR RECORD OF DWG CHANGES SEE BCM-25B-18
9	REVISION						SEE RECORD OF DWG CHANGES BCM-25B-18	8	REVISION						FOR RECORD OF DWG CHANGES SEE BCM-25B-18
8	REVISION						SEE RECORD OF DWG CHANGES BCM-25B-18	7	REVISION						FOR RECORD OF DWG CHANGES SEE BCM-25B-18
7	REVISION						SEE RECORD OF DWG CHANGES BCM-25B-18	6	REVISION						FOR RECORD OF DWG CHANGES SEE BCM-25B-18
6	REVISION						SEE RECORD OF DWG CHANGES BCM-25B-18	5	REVISION						FOR RECORD OF DWG CHANGES SEE BCM-25B-18
5	REVISION						SEE RECORD OF DWG CHANGES BCM-25B-18	4	REVISION						FOR RECORD OF DWG CHANGES SEE BCM-25B-18
4	REVISION						SEE RECORD OF DWG CHANGES BCM-25B-18	3	REVISION						FOR RECORD OF DWG CHANGES SEE BCM-25B-18
3	REVISION						SEE RECORD OF DWG CHANGES BCM-25B-18	2	REVISION						FOR RECORD OF DWG CHANGES SEE BCM-25B-18
2	REVISION						SEE RECORD OF DWG CHANGES BCM-25B-18	1	REVISION						FOR RECORD OF DWG CHANGES SEE BCM-25B-18

PDR RIDS

8802050209

