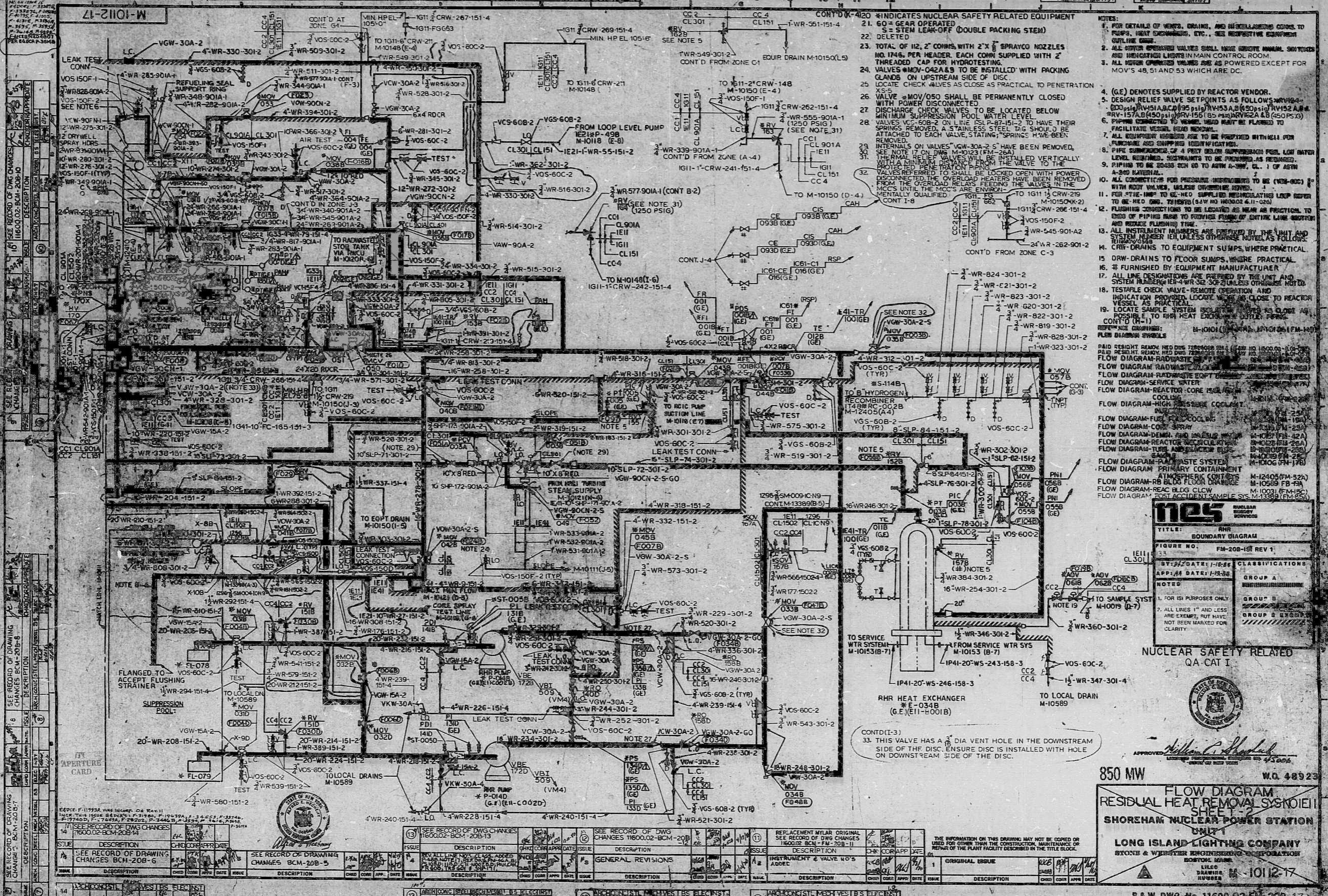


15	SEE RECORD OF DWG CHANGES 11600.02-BCM-208-15	16	SEE RECORD OF DWG CHANGES 11600.02-BCM-208-16	17	SEE RECORD OF DWG CHANGES 11600.02-BCM-208-17
----	---	----	---	----	---



NOTES:

- FOR DETAILS OF VALVES, GASKETS, AND INSTALLATION GO TO PIPES, HEAT EXCHANGERS, ETC., SEE RESPECTIVE EQUIPMENT OUTLINE DRAWINGS.
- ALL SYSTEM OPERATED VALVES SHALL HAVE GROUND ANNUAL SERVICE AND INDICATED LIGHTS IN MAIN CONTROL ROOM.
- ALL SYSTEM OPERATED VALVES ARE AS POWERED EXCEPT FOR MOV'S 48, 51 AND 53 WHICH ARE DC.
- (G.E.) DENOTES SUPPLIED BY REACTOR FOLLOWER.
- DESIGN RELIEF VALVE SETPOINTS AS FOLLOWS: WR-152 A,B,C,D (95 PSI) WR-153 A,B (50 PSI) WR-152 A,B (50 PSI) WR-153 A,B (50 PSI) WR-152 A,B (50 PSI) WR-153 A,B (50 PSI)
- PIPING CONNECTED TO VESSEL HEAD MUST BE FLANGED TO FACILITATE VESSEL HEAD REMOVAL.
- ALL EQUIPMENT SUBJECTS ARE TO BE PROVIDED WITH HELL FOR PURCHASE AND SHIPPED IDENTIFICATION.
- PIPE SUBMERGENCE OF 4 FEET BELOW SUPPLY POOL LOW WATER LEVEL REQUIRED. RESTRAINTS TO BE PROVIDED AS REQUIRED.
- PIPING TO BE 2000S UNLESS OTHERWISE NOTED.
- ALL CONNECTIONS FOR PRESSURE INSTRUMENTS TO BE (NOM-002) WITH BODY VALVES, UNLESS OTHERWISE NOTED.
- FOR FTR-100P TO BE USED SUPPLIED RECALIBRATED LOOP REFER TO BE-100. TO BE USED (LAW NO. 10000-41-100)
- FLUSHING CONNECTIONS TO BE LOCATED AS NEAR AS PRACTICAL TO END OF PIPING RUNS TO FACILITATE FLUSHING OF ENTIRE LINE SECTION AND RIDGE FLUSHING TIME.
- ALL INSTRUMENT VALVES ARE PROVIDED BY THE UNIT AND SYSTEM MANUFACTURER UNLESS OTHERWISE NOTED AS FOLLOWS:
- CRV-DRAINS TO EQUIPMENT Sumps, WHERE PRACTICAL.
- DRAW-DRAINS TO FLOOR Sumps, WHERE PRACTICAL.
- IF FURNISHED BY EQUIPMENT MANUFACTURER.
- ALL LINE DESIGNATIONS ARE PROVIDED BY THE UNIT AND SYSTEM MANUFACTURER UNLESS OTHERWISE NOTED.
- TESTABLE CHECK VALVE REMOVE OPERATOR INDICATION PROVIDED LOCATE VALVE AS CLOSE TO REACTOR VESSEL AS PRACTICAL.
- LOCATE SAMPLE ISOLATION VALVES AS CLOSE AS POSSIBLE TO THE HEAT EXCHANGER DUTILE PIPING.

CONT'D FROM ZONE C-3

33. THIS VALVE HAS A 3/4" DIA VENT HOLE IN THE DOWNSTREAM SIDE OF THE DISC. ENSURE DISC IS INSTALLED WITH HOLE ON DOWNSTREAM SIDE OF THE DISC.

850 MW **W.O. 48923**

FLOW DIAGRAM RESIDUAL HEAT REMOVAL SYSTEM

SHOREHAM NUCLEAR POWER STATION

LONG ISLAND LIGHTING COMPANY

STONE & WEBSTER ENGINEERING CORPORATION

11-1012-17

S&W DWG-NO. 11600.02-FM-208-17

8802050203

NO.	DESCRIPTION	DATE	BY	CHECKED	APPROVED
1	ISSUE				
2	REVISION				
3	REVISION				
4	REVISION				
5	REVISION				
6	REVISION				
7	REVISION				
8	REVISION				
9	REVISION				
10	REVISION				

PDR RIDS

8802050203

