

DRAWING SUBJECT TO REVISION PER  
 DRAWING BEING REVISED PER  
 OCH# 244-1760

**INFORMATION ONLY**

NON-CONTROLLED POINT  
 JUL 18 1985  
 NPPD BAN.



454223428

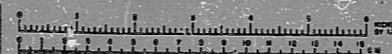
- NOTES:
1. SEE DRAWINGS 11710-150-1-1, 11710-150-1-2, 11710-150-2-1, 11710-150-2-2, AND 11710-150-10-6 FOR TUBE ROUTING AND SUPPORT LOCATIONS.
  2. FOR A L.L. OF MATERIALS SEE DRAWING 11710-150-1-1, 11710-150-2-1, AND 11710-150-10-6.
  3. ALL TUBES ON PANELS ARE 1/4" UNLESS NOTED OTHERWISE.
  4. LOCATE IN JACKET WATER DISCHARGE HEADER AT FORWARD END OF ENGINE.
  5. SCREEN VALVE TO OUTLET PIPE ON VARIABLE TURBO OIL PRESSURE REGULATOR WITH ARROW POINTING AWAY FROM REGULATOR.

From	To	TUBING SIZE
157	12 18 100 21 23 25 30 32 34 38 39 40 46	1/2"
157	3 8 9 10 18 19 106 109 110 184 27	1/2"
157	1 19 30 38 42 46	1/4"

ANSTEC  
 APERTURE  
 CARD

REV. NO.	DATE	DESCRIPTION
117-10-1C-01		Control Air Schematic
117-10-1C-02		Control Air Schematic
117-10-1C-03		Control Air Schematic
117-10-1C-04		Control Air Schematic
117-10-1C-05		Control Air Schematic
117-10-1C-06		Control Air Schematic
117-10-1C-07		Control Air Schematic
117-10-1C-08		Control Air Schematic
117-10-1C-09		Control Air Schematic
117-10-1C-10		Control Air Schematic
117-10-1C-11		Control Air Schematic
117-10-1C-12		Control Air Schematic
117-10-1C-13		Control Air Schematic
117-10-1C-14		Control Air Schematic
117-10-1C-15		Control Air Schematic
117-10-1C-16		Control Air Schematic
117-10-1C-17		Control Air Schematic
117-10-1C-18		Control Air Schematic
117-10-1C-19		Control Air Schematic
117-10-1C-20		Control Air Schematic

FEB. 25, 1994 NPPD



PDR

9512040209

