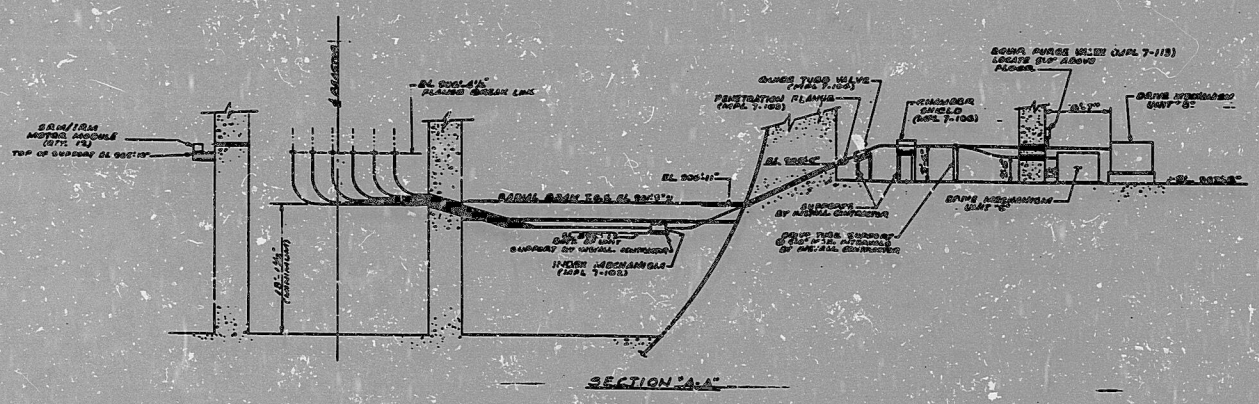


NOTES:
1. THIS DRAWING IS TO BE USED FOR THE APERTURE CARD ASSEMBLY.
2. SEE A CONTRACTOR TO VERIFY THE APERTURE CARD ASSEMBLY IS CORRECTLY INSTALLED.
3. SEE A CONTRACTOR TO VERIFY THE APERTURE CARD ASSEMBLY IS CORRECTLY INSTALLED.
4. SEE A CONTRACTOR TO VERIFY THE APERTURE CARD ASSEMBLY IS CORRECTLY INSTALLED.



ANSTEC
APERTURE
CARD

RECEIVED

454003661

FOR
CONSTRUCTION

NO. 101	NO. 102	NO. 103	NO. 104	NO. 105	NO. 106	NO. 107	NO. 108	NO. 109	NO. 110

NO.	DATE	BY	REVISION
1			
2			

454003661

FOR CONSTRUCTION

ENGINE AND ARCH. INC.
ENGINEERS AND ARCHITECTS
CORPORATE BLDG. 100 ANSEL CANY.
TRAVELERS TRAIL, W. O. 2830
PLAN 4-B VARIATION

CONGRESS PUBLIC POWER DISTRICT
COVER NUCLEAR STATION

DATE: 11/29/50
BY: W. O. 2830
CHECKED BY: [Signature]
DATE: 11/29/50

PDR

9512040202

