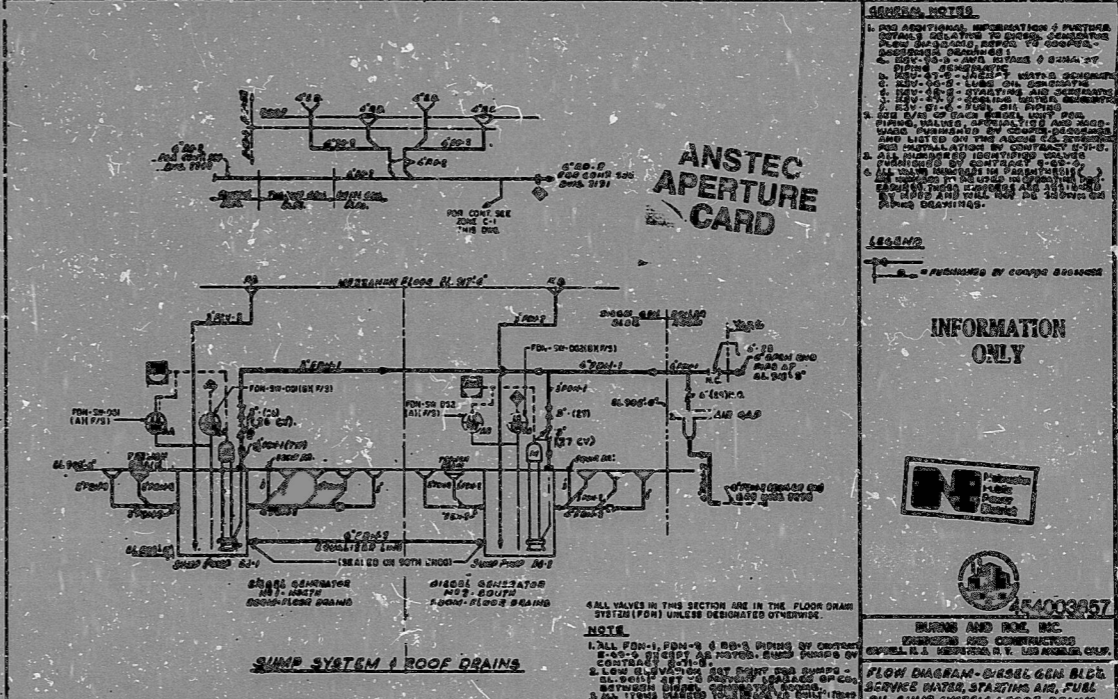
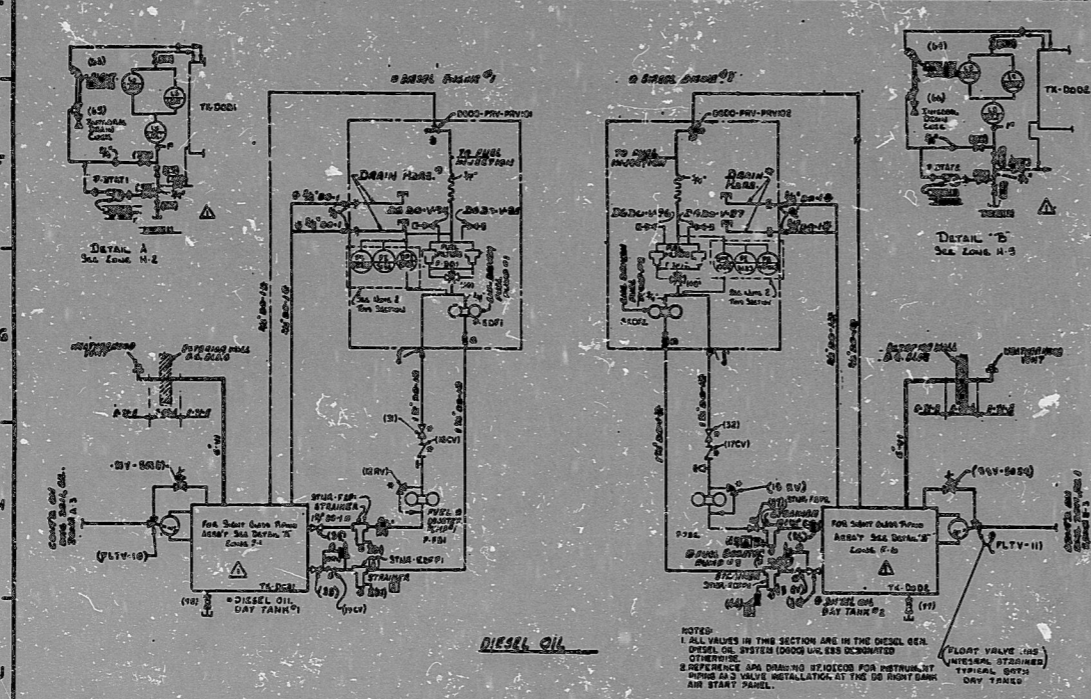


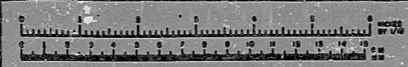
NON-CONTROLLED PRINT
 JUL 16 1995
 NPPD, RAS.



GENERAL NOTES:
 1. SEE ADDITIONAL INFORMATION ON PARTS LIST FOR MATERIALS TO BE USED IN CONNECTION WITH THIS PROJECT.
 2. ALL VALVES IN THIS SECTION ARE IN THE DIESEL OIL SYSTEM UNLESS DESIGNATED OTHERWISE.

NO.	DATE	DESCRIPTION	BY	CHKD.
1	07/16/95	AS BUILT		

MAR. 3, 1995 NPPD



INFORMATION ONLY

44003957

COMMERCIAL PUBLIC POWER DISTRICT
 GEORGE ANSLER STATION

W. O. 2820
 DWG. 107

PDR

9512 040200

