

**NOTES:**

1. UNLESS OTHERWISE INDICATED, ALL PIPING SHALL BE 304L STAINLESS STEEL. ALL VALVES SHALL BE FURNISHED AND INSTALLED UNDER CONTRACT U-60-4.
2. AT BULKHEAD POINTS CONNECTIONS SHALL BE FURNISHED AND INSTALLED UNDER CONTRACT U-60-4. PRESSURE SHALL BE MAINTAINED AND INSTALLED IN ACCORDANCE WITH CONTRACT U-60-4. 3. ALL PIPING SHALL BE PER CLASSIFICATION "A" NUCLEAR OR "B" NUCLEAR WITHIN THE LIMITS SPECIFIED HEREON.
3. ALL "C" PIPING SHALL BE PER CLASSIFICATION "C" NUCLEAR OR "D" NUCLEAR WITHIN THE LIMITS SPECIFIED HEREON.
4. TYPICAL DEMONSTRATION CHANGE FOR VENT SYSTEM VENT DRAINS WITH DRAIN ISOLATION SHALL BE AS SHOWN BELOW.
5. ALL "C" DRAIN PIPING TO DRAIN DUMPS SHALL BE PARTICULATE FILTERED AND OPERATED WITH MATERIALS AND METHODS PER CLASSIFICATION "C" NUCLEAR FOR THE SYSTEM.
6. PLANS FOR RE-MOTE DRAINAGE TO BE FURNISHED ON 7/10/85.
7. ALL VALVE NUMBERS IN PARENTHESES ( ) ARE NUMBERS USED IN OPERATING PROCEDURES. LARGE NUMBERS ARE ASSIGNED TO THE VALVE AND WILL NOT BE SHOWN ON PIPING DRAWINGS.
8. INSTRUMENT, DRAIN, TEST, DRAIN, AND TEST DRAIN AND TEST POINTS SHALL BE AS SHOWN ON THE SITE LINES AND THESE NUMBERS ARE TO BE ADDED TO COMPLETE THE INSTRUMENT LIST FROM THE INSTRUMENT DESCRIPTIONS FOR DETAILS.

NON-CONTROLLED PRINT  
 JUL 18 1985  
 NPPD PAR

**NOTE:**  
 ALL ITEMS MARKED THIS [ ] ARE "AS BUILT" ITEMS AND NOT SHOWN ON PIPING DWGS.

INFORMATION ONLY  
 AS BUILT

ANSTEC  
 APERTURE  
 CARD

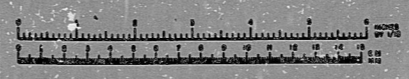
ENRUP AND ROE, INC.  
 ENGINEERS AND ARCHITECTS  
 CHARLIE, ILL. 61820  
 FLOW DIAGRAM  
 REACTOR VESSEL CLEAN UP  
 SYSTEM  
 COMMERCE PUBLIC POWER DISTRICT  
 COOPER NUCLEAR STATION  
 W. O. 1520

REVISIONS TO BE MADE FOR PREVIOUS REVISIONS SEE DIFFERENCE CHG'S.

REV.	DATE	BY	CHKD.	DESCRIPTION
1	12/15/84	...	...	...
2	...	...	...	...
3	...	...	...	...

NO.	DATE	BY	CHKD.	DESCRIPTION
1	...	...	...	...
2	...	...	...	...

MAR. 31, 1995 NPPD



PDR

9512040187

