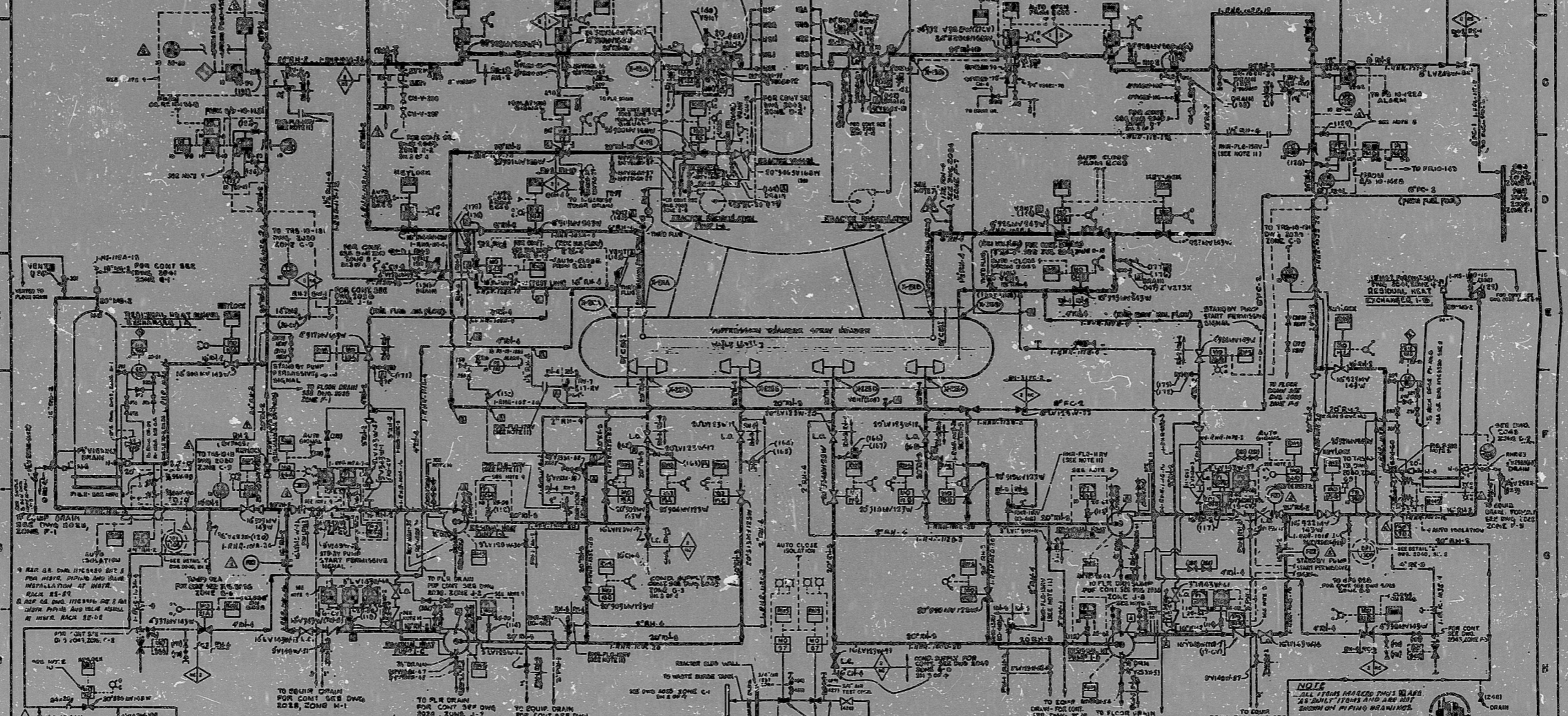


ANSTEC APERTURE CARD
 NON-CONTROLLED PRINT
 JUL 18 1994
 NPPD BAR

INFORMATION ONLY

ALL FUTURE REGISTERED BY NEBRASKA PUBLIC POWER DISTRICT
 FOR FUTURE REGISTERED BY NEBRASKA PUBLIC POWER DISTRICT



1	1. ALL VALVES IDENTIFIED AS VES-1 THROUGH VES-100 SHALL BE INSTALLED AND OPERATED IN ACCORDANCE WITH THE REQUIREMENTS OF THE NEBRASKA PUBLIC POWER DISTRICT. VALVE NUMBERS IN PARENTHESES ARE NUMBERS TO BE USED IN OPERATING PROCEDURES THESE NUMBERS ARE REQUIRED BY NPPD AND WILL NOT BE SHOWN ON PIPING DRAWINGS.
2	2. ALL VALVES IDENTIFIED AS VES-1 THROUGH VES-100 SHALL BE INSTALLED AND OPERATED IN ACCORDANCE WITH THE REQUIREMENTS OF THE NEBRASKA PUBLIC POWER DISTRICT. VALVE NUMBERS IN PARENTHESES ARE NUMBERS TO BE USED IN OPERATING PROCEDURES THESE NUMBERS ARE REQUIRED BY NPPD AND WILL NOT BE SHOWN ON PIPING DRAWINGS.
3	3. ALL VALVES IDENTIFIED AS VES-1 THROUGH VES-100 SHALL BE INSTALLED AND OPERATED IN ACCORDANCE WITH THE REQUIREMENTS OF THE NEBRASKA PUBLIC POWER DISTRICT. VALVE NUMBERS IN PARENTHESES ARE NUMBERS TO BE USED IN OPERATING PROCEDURES THESE NUMBERS ARE REQUIRED BY NPPD AND WILL NOT BE SHOWN ON PIPING DRAWINGS.
4	4. ALL VALVES IDENTIFIED AS VES-1 THROUGH VES-100 SHALL BE INSTALLED AND OPERATED IN ACCORDANCE WITH THE REQUIREMENTS OF THE NEBRASKA PUBLIC POWER DISTRICT. VALVE NUMBERS IN PARENTHESES ARE NUMBERS TO BE USED IN OPERATING PROCEDURES THESE NUMBERS ARE REQUIRED BY NPPD AND WILL NOT BE SHOWN ON PIPING DRAWINGS.
5	5. ALL VALVES IDENTIFIED AS VES-1 THROUGH VES-100 SHALL BE INSTALLED AND OPERATED IN ACCORDANCE WITH THE REQUIREMENTS OF THE NEBRASKA PUBLIC POWER DISTRICT. VALVE NUMBERS IN PARENTHESES ARE NUMBERS TO BE USED IN OPERATING PROCEDURES THESE NUMBERS ARE REQUIRED BY NPPD AND WILL NOT BE SHOWN ON PIPING DRAWINGS.
6	6. ALL VALVES IDENTIFIED AS VES-1 THROUGH VES-100 SHALL BE INSTALLED AND OPERATED IN ACCORDANCE WITH THE REQUIREMENTS OF THE NEBRASKA PUBLIC POWER DISTRICT. VALVE NUMBERS IN PARENTHESES ARE NUMBERS TO BE USED IN OPERATING PROCEDURES THESE NUMBERS ARE REQUIRED BY NPPD AND WILL NOT BE SHOWN ON PIPING DRAWINGS.
7	7. ALL VALVES IDENTIFIED AS VES-1 THROUGH VES-100 SHALL BE INSTALLED AND OPERATED IN ACCORDANCE WITH THE REQUIREMENTS OF THE NEBRASKA PUBLIC POWER DISTRICT. VALVE NUMBERS IN PARENTHESES ARE NUMBERS TO BE USED IN OPERATING PROCEDURES THESE NUMBERS ARE REQUIRED BY NPPD AND WILL NOT BE SHOWN ON PIPING DRAWINGS.
8	8. ALL VALVES IDENTIFIED AS VES-1 THROUGH VES-100 SHALL BE INSTALLED AND OPERATED IN ACCORDANCE WITH THE REQUIREMENTS OF THE NEBRASKA PUBLIC POWER DISTRICT. VALVE NUMBERS IN PARENTHESES ARE NUMBERS TO BE USED IN OPERATING PROCEDURES THESE NUMBERS ARE REQUIRED BY NPPD AND WILL NOT BE SHOWN ON PIPING DRAWINGS.
9	9. ALL VALVES IDENTIFIED AS VES-1 THROUGH VES-100 SHALL BE INSTALLED AND OPERATED IN ACCORDANCE WITH THE REQUIREMENTS OF THE NEBRASKA PUBLIC POWER DISTRICT. VALVE NUMBERS IN PARENTHESES ARE NUMBERS TO BE USED IN OPERATING PROCEDURES THESE NUMBERS ARE REQUIRED BY NPPD AND WILL NOT BE SHOWN ON PIPING DRAWINGS.
10	10. ALL VALVES IDENTIFIED AS VES-1 THROUGH VES-100 SHALL BE INSTALLED AND OPERATED IN ACCORDANCE WITH THE REQUIREMENTS OF THE NEBRASKA PUBLIC POWER DISTRICT. VALVE NUMBERS IN PARENTHESES ARE NUMBERS TO BE USED IN OPERATING PROCEDURES THESE NUMBERS ARE REQUIRED BY NPPD AND WILL NOT BE SHOWN ON PIPING DRAWINGS.

NOTE: THIS DRAWING IS A NON-CONTROLLED PRINT AND IS NOT TO BE USED FOR CONSTRUCTION OR ASSEMBLY OF EQUIPMENT.
 454003033

AS BUILT

BARNS AND ROE, INC.
 ENGINEERS AND ARCHITECTS
 1000 N. 10TH ST., SUITE 100
 LINCOLN, NE 68502

RESIDUAL HEAT REMOVAL SYSTEM

CONSUMER PUBLIC POWER DISTRICT
 COOPER NUCLEAR STATION

W. O. 1580
 DWG. NO. 1000

APR. 11, 1995 NPPD

PDR

9512040175

