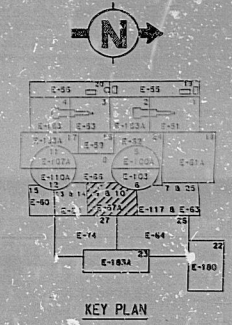
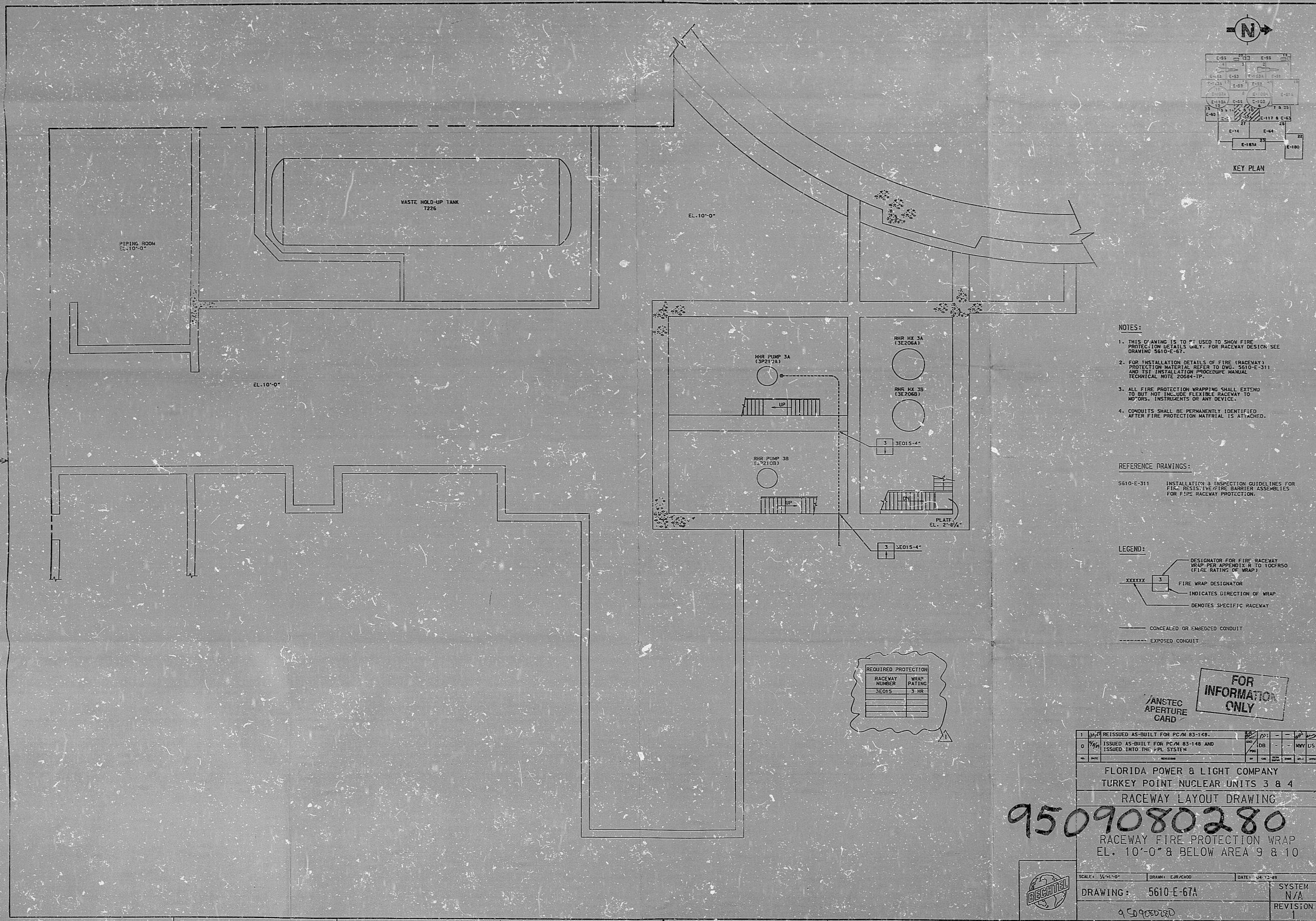


5610-E-67A

30 X 42 1/2" 8122



- NOTES:
1. THIS DRAWING IS TO BE USED TO SHOW FIRE PROTECTION DETAILS ONLY. FOR RACEWAY DESIGN SEE DRAWING 5610-E-67.
  2. FOR INSTALLATION DETAILS OF FIRE (RACEWAY) PROTECTION MATERIAL REFER TO DWG. 5610-E-311 AND 1ST INSTALLATION PROCEDURE MANUAL TECHNICAL NOTE 2008-17.
  3. ALL FIRE PROTECTION WRAPPING SHALL EXTEND TO BUT NOT INCLUDE FLEXIBLE RACEWAY TO MOTORS, INSTRUMENTS OR ANY DEVICE.
  4. CONDUITS SHALL BE PERMANENTLY IDENTIFIED AFTER FIRE PROTECTION MATERIAL IS ATTACHED.

REFERENCE DRAWINGS:

5610-E-311 INSTALLATION & INSPECTION GUIDELINES FOR FIRE RESISTIVE FIRE BARRIER ASSEMBLIES FOR FIRE RACEWAY PROTECTION.

LEGEND:

XXXXXX 3 DESIGNATOR FOR FIRE RACEWAY WRAP PER APPROX. 8 TO 100FSO (FIRE RATING OF WRAP)

3 FIRE WRAP DESIGNATOR

INDICATES DIRECTION OF WRAP

DENOTES SPECIFIC RACEWAY

CONCEALED OR EMBEDDED CONDUIT

EXPOSED CONDUIT

REQUIRED PROTECTION	
RACEWAY NUMBER	WRAP RATING
3E015	3 HR

FOR INFORMATION ONLY

ANSTEC APERTURE CARD

1	ISSUED AS-BUILT FOR PC/M 83-148.	100	100	100	100
0	ISSUED AS-BUILT FOR PC/M 83-148 AND ISSUED INTO THE FPL SYSTEM	100	100	100	100
REVISION					
FLORIDA POWER & LIGHT COMPANY					
TURKEY POINT NUCLEAR UNITS 3 & 4					
RACEWAY LAYOUT DRAWING					
9509080280					
RACEWAY FIRE PROTECTION WRAP					
EL. 10'-0" & BELOW AREA 9 & 10					
SCALE: 1/4"=1'-0"					
DRAWN: EBF/CD					
DATE: 04-12-89					
DRAWING: 5610-E-67A					
SYSTEM N/A					
REVISION 1					
9509080280					



PDR RIDS

9509080280

