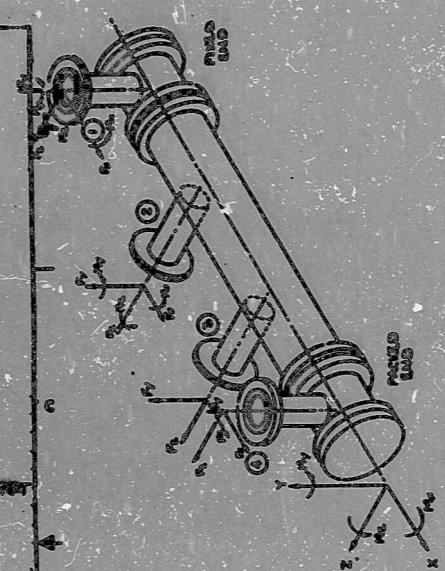
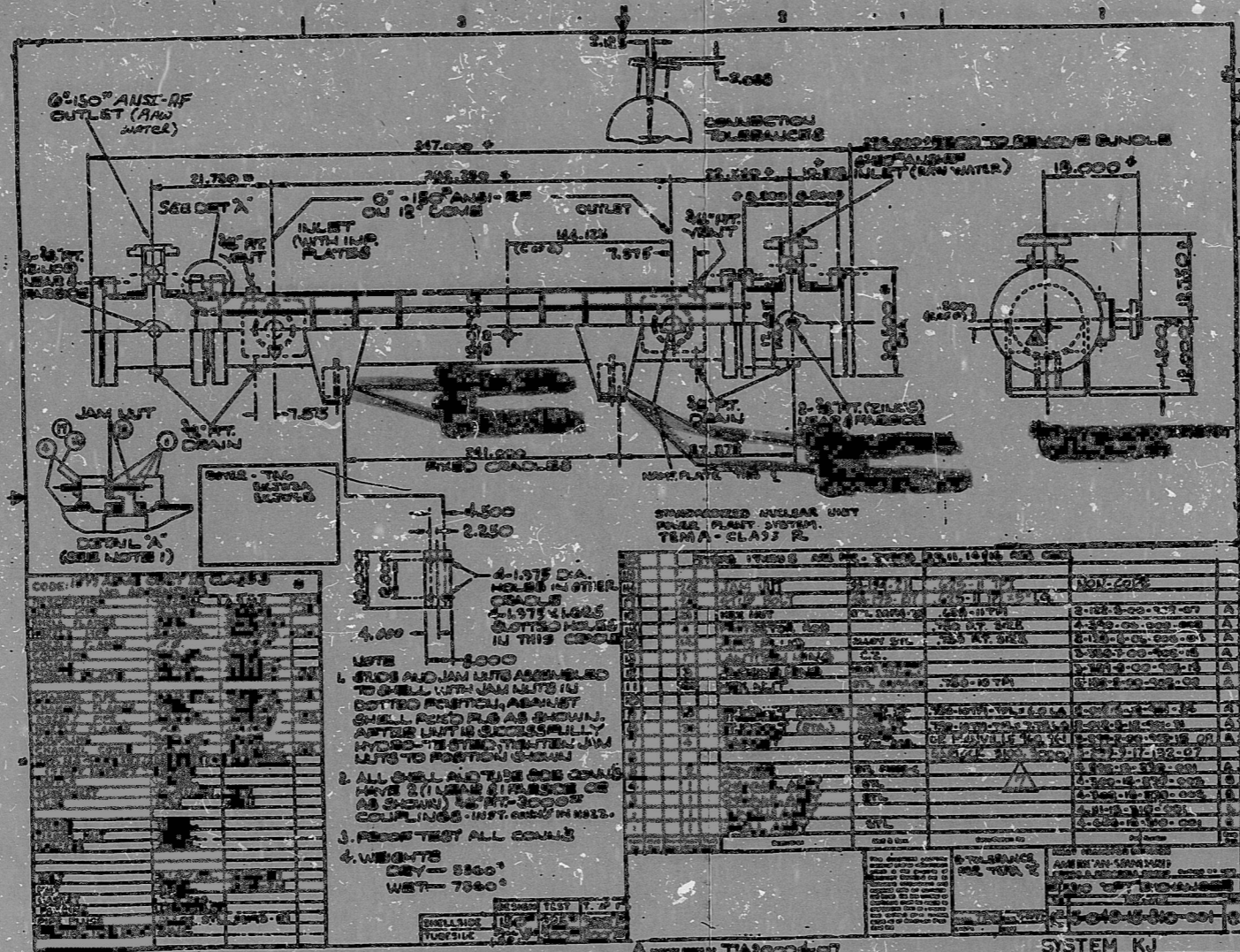


BECHTEL NOTES
 LAPPED INSIDE EQUIPMENT SUPPORT
 NOS. FOR 161 PER ULS-4205-10-95
 #BHT-PE0022 (4-10-95). NO FIELD
 WORK REQUIRED.



CODE	DESCRIPTION	QTY	UNIT
1
2
3
4

NOTE
 1. ALL JAM NUTS ASSEMBLED TO SHELL WITH JAM NUTS IN DOTTED POSITION, AGAINST SHELL END OF AS SHOWN. AFTER LIFT IS SUCCESSFULLY MADE TO THE EXTENT JAM NUTS TO POSITION SHOWN.
 2. ALL GASKETS AND O-RINGS MUST BE 2 (TWO) TIMES THE SIZE OF AS SHOWN IN FITTING COUPLINGS AND IN NUTS.
 3. REWORK TEST ALL COUPLINGS.
 4. WEIGHTS
 CWY - 8500#
 WBY - 7500#

ITEM NO.	DESCRIPTION	QTY	UNIT	REVISION
1
2
3
4

REV.	DATE	BY	CHKD.
5	5/12/98	RLM	...
6	...	MAL	...
7

AS-BUILT M-018-00091 7

I certify that the design contained on this sheet was made in the normal and regular course of business, on the date stated below and that it is an accurate representation of the design as actually constructed.

INFORMATION ONLY

REV.	DATE	BY	CHKD.
5	5/12/98	RLM	...
6	...	MAL	...
7

ANSTEC APERTURE CARD

9509050222

PDR RIDS

9509050222

