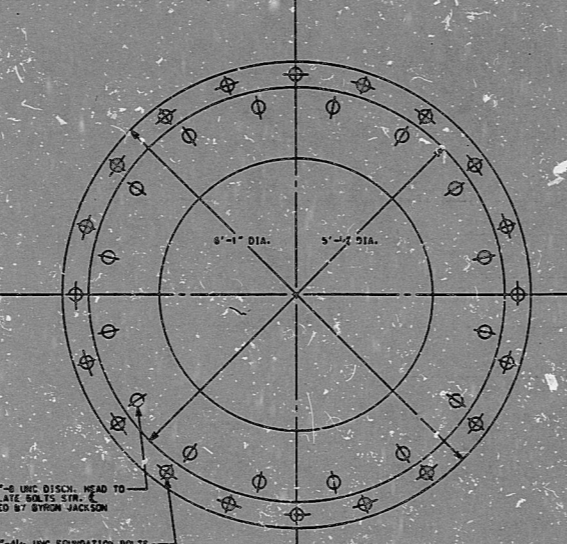
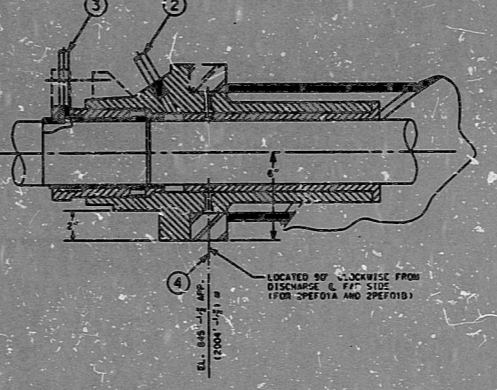
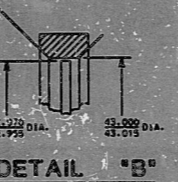
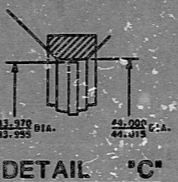
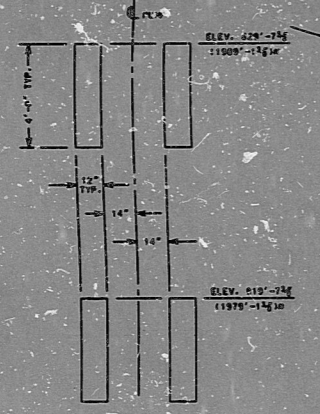


SEE NOTE 1 FOR
 THE LOCATION OF
 THE VIBRATION
 SENSOR FOR
 CALIBRATION
 PURPOSES
 INCORPORATE
 THIS INTO THE
 AS-BUILT DRAWING.

NOTE: THE PUMP IS COUNTER-CLOCKWISE
 WHEN VIEWED FROM COMPLETION END

NUMBERS IN PARENTHESES ARE SHIPPS STANDARD PLANT
 REFERENCE ELEVATIONS:
 (1) EQUIPMENT SUPPORT
 (2) DENOTES INTERNAL ATTACHMENTS
 (3) DENOTES HELDS SELECTED FOR EXAMINATION



(1) 2\"/>

(2) 2\"/>

APPROXIMATE WEIGHTS

PUMP (DRY)	24,000 LBS
SOLE PLATE	1400 LBS
MOTOR	18000 LBS

ANSTEC
 APERTURE
 CARD

INFORMATION
 ONLY

THE BYRON JACKSON DESIGN REPORT SHALL PROVIDE THE
 FOLLOWING INFORMATION:
 1. THRUST LOADS
 2. ANCHOR BOLT LOADS
 3. LIMITING DEFLECTIONS DURING SEISMIC EVENT
 4. LIMITING DEFLECTION RESTRAINTS

ESSENTIAL SERVICE WATER PUMP
 PURCHASE ORDER NUMBER 10884-M-089-142

30X
 AS-BUILT

OUTLINE DRAWING ST RXX 2 STS TYPE VCT	
DATE	11/10/88
BY	BYRON JACKSON
CHECKED	BYRON JACKSON
APPROVED	BYRON JACKSON
UNION ELECTRIC COMPANY	M-089-U0012
ST. LOUIS, MO	10

9509050205

PDR RIDS

9509050205

