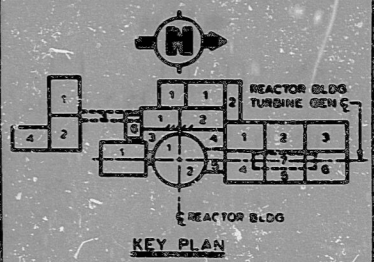
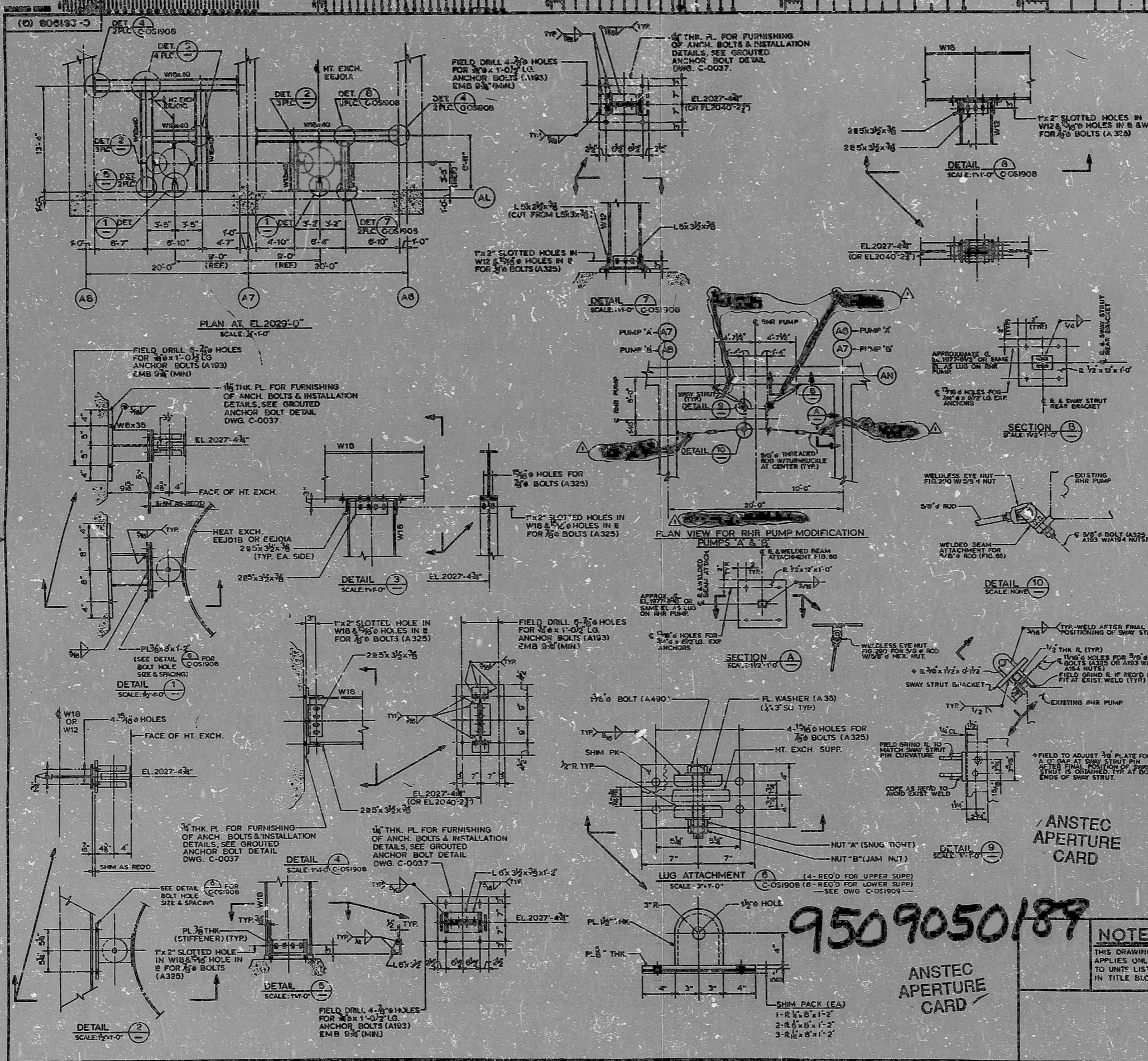


This drawing and the design it carries is the property of the Union which are participating in the EEP/199 Project. It is loaned to the borrower's company for use in the project and is not to be reproduced, copied, loaned, exhibited, or used in any way without the express approval of the EEP/199 Project. It is loaned to the borrower's company for use in the project and is not to be reproduced, copied, loaned, exhibited, or used in any way without the express approval of the EEP/199 Project.



NOTES

- FOR GENERAL NOTES SEE DWG. C-0003.
- GENERAL INSTRUCTION FOR INSTALLATION OF RHR PUMP MODIFICATION:
 - A) INSTALL SWAY STRUTS WITHOUT PULLING THE MOTOR TO ITS ALIGNMENT.
 - B) INSTALL 3/8" THREADED RODS TO ACHIEVE A BALANCED SUPPORT CONFIGURATION WHILE MAINTAINING THE MOTOR ALIGNMENT.

REFERENCE DRAWINGS

- C-CC1411 AUXILIARY BLDG. - AREA 1 CONCRETE NEAT LINES PLAN-FLOOR EL.2026'-0"
- C-OC1421 AUXILIARY BLDG. - AREA 2 CONCRETE NEAT LINES PLAN-FLOOR E..2026'-0"
- C-OS1909 AUXILIARY BLDG MISC STEEL HEAT EXCHANGER SUPPORTS
- C-OS1904 AUXILIARY BLDG-STRUCTURAL STEEL PUMP PEDESTAL S-ANS AND DETAILS

MATERIAL RESPONSIBILITY

- MISCELLANEOUS STEEL TO BE SUPPLIED UNDER SPEC. 10466-C-131
- ALL MATERIALS SHOWN FOR THE PUMP MODIFICATION SHALL BE PROVIDED BY THE OWNER. SWAY STRUTS, WELDED BEAM ATTACHMENT, WELDED EYE NUTS & THREADED RODS SHALL BE PROVIDED BY THE CONTRACTOR. ALL MATERIAL SHALL BE PROVIDED BY THE CONTRACTOR. ALL MATERIAL SHALL BE PROVIDED BY THE CONTRACTOR. ALL MATERIAL SHALL BE PROVIDED BY THE CONTRACTOR.

INFORMATION ONLY

<p>NOTE: THIS DRAWING APPLIES ONLY TO UNITS LISTED IN TITLE BLOCK</p>	<p>ANSTEC APERTURE CARD</p>
<p>BECHTEL COURTESY, BECHTEL</p>	<p>SNUPPS AUXILIARY BLDG. MISCELLANEOUS STEEL HEAT EXCHANGER SUPPORTS</p>
<p>10466 C-251008 (C) 1</p>	<p>3-5-65</p>

9509050189

ANSTEC APERTURE CARD

601850 808

PDR RIDS

9509050189

