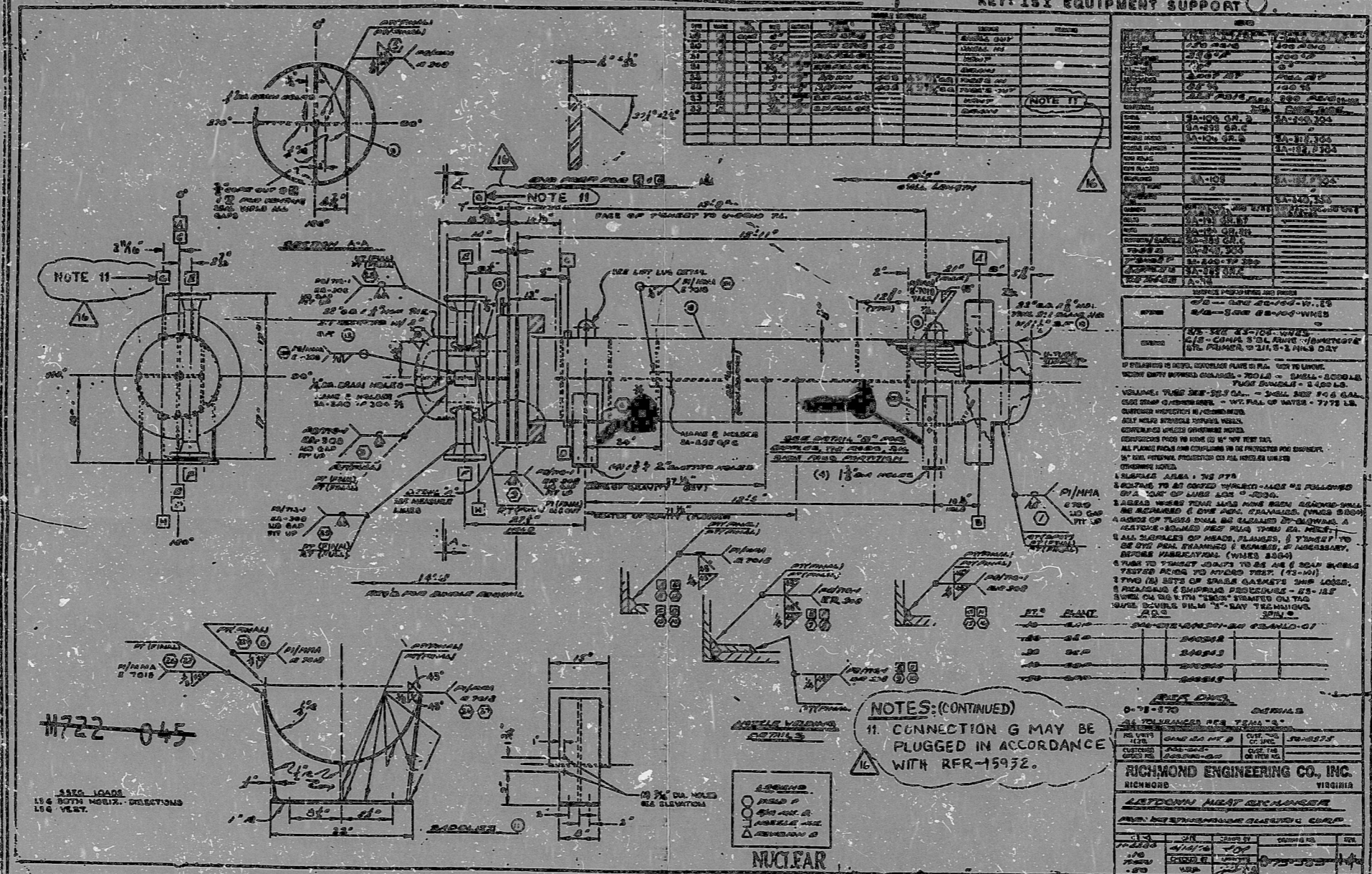


TRANSFORMER POWER UNIT POWER
 UNIT: 300
 274700; TURNED OVER TO UE
 7/6 AM 8/26/52

RECHTEL NOTES
 1. ADDED UNIQUE EQUIPMENT SUPPORT NOS. FOR
 353 PER ULB-496 (5-10-55). NO FIELD WORK
 REQUIRED.
 KEY: ISX EQUIPMENT SUPPORT



REV.	DATE	BY	CHKD.	DESCRIPTION
15	4/11/52	MAL		
16	4/11/52	RLW		
17	4/11/52	N/A		

INCORP
 ULB-496 &
 EFR-15510A

INCORP.
 RFR-15952

NOTES (CONTINUED)
 11. CONNECTION G MAY BE
 PLUGGED IN ACCORDANCE
 WITH RFR-15952.

REV.	DATE	BY	CHKD.	DESCRIPTION
1
2
3
4
5
6
7
8
9
10
11
12
13
14
15
16
17
18
19
20

16X

I CERTIFY THAT THE IMAGE CONTAINED ON THIS FRAME WAS MADE IN THE NORMAL
 AND REGULAR COURSE OF BUSINESS, ON THE DATE STATED BELOW AND THAT IT IS AN
 ACCURATE REPRODUCTION OF THE DOCUMENT(S) SUBMITTED TO MICROGRAPHY.
 DATE: 5/18/55 OPERATOR: B. Quinn SUPERVISOR: A. M. Lee

D-75-569 16

9509050179

INFORMATION
 ONLY

ANSTEC
 APERTURE
 CARD

PDR RIDS

9509050179

